

Business survey at the end of December 2019

Manufacturing industry, market services and construction: sectoral level information

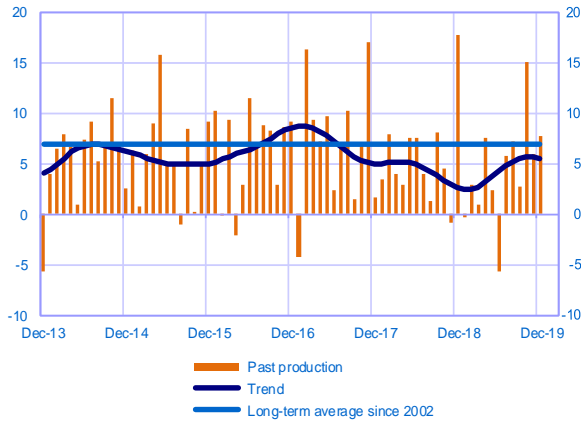
MANUFACTURING INDUSTRY

Manufacture of food products and beverages

(15% of value added in manufacturing industry)

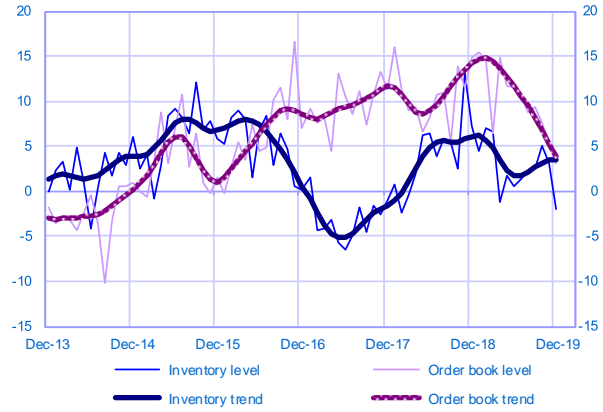
Changes in production

Balance of opinions, SA-WDA



Inventories and order book level

Balance of opinions, SA-WDA



December	Production	Deliveries	Orders	Inventories	Order books	Capacity Utilisation Rate	Production forecasts
Manufacture of food products and beverages	8	6	8	-2	3	78	8

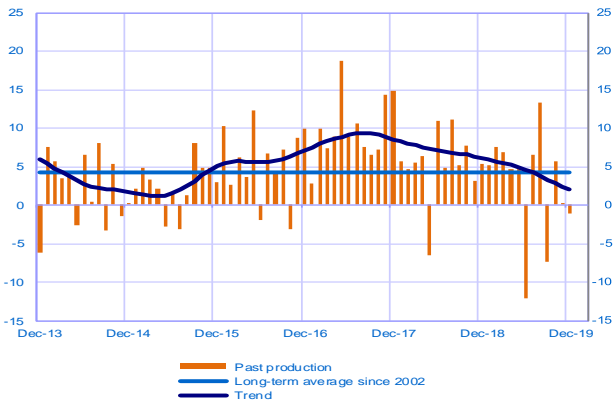
Electrical, electronic and computer equipment and other machinery

(17% of value added in manufacturing industry)

Total

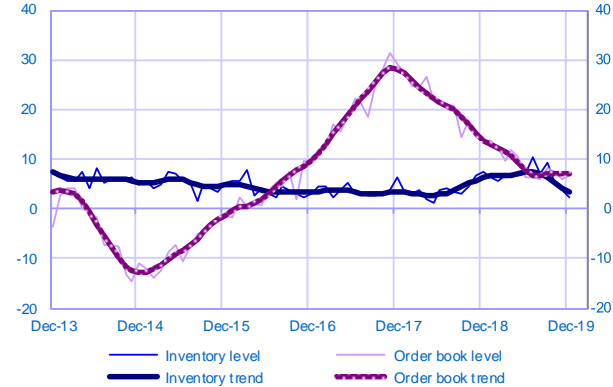
Changes in production

Balance of opinions, SA-WDA



Inventories and order book level

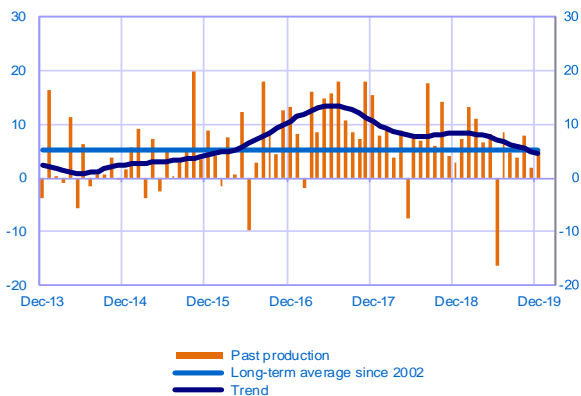
Balance of opinions, SA-WDA



Computer, electronic and optical products (5% of value added)

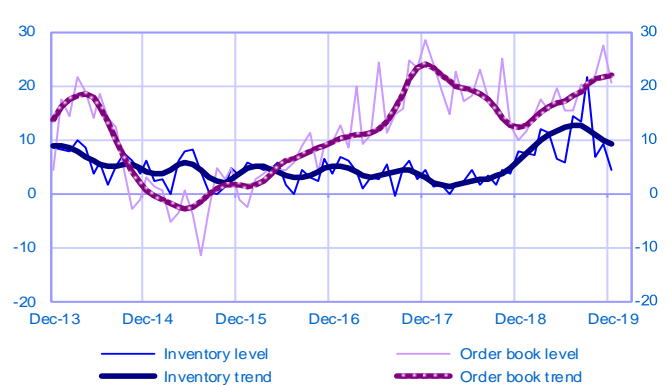
Changes in production

Balance of opinions, SA-WDA



Inventories and order book level

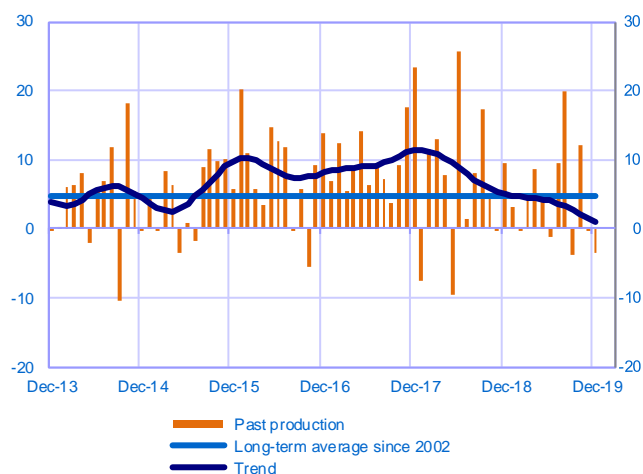
Balance of opinions, SA-WDA



Electrical equipment (4% of value added)

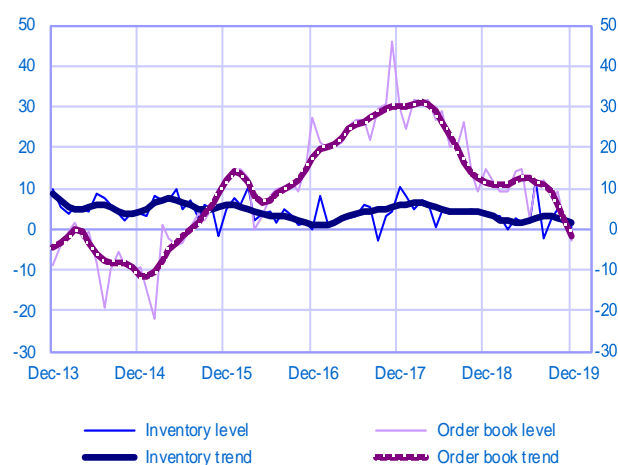
Changes in production

Balance of opinions, SA-WDA



Inventories and order book level

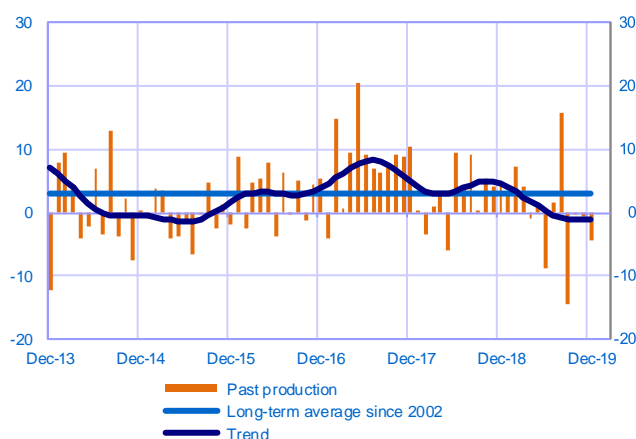
Balance of opinions, SA-WDA



Machinery and equipment (8% of value added)

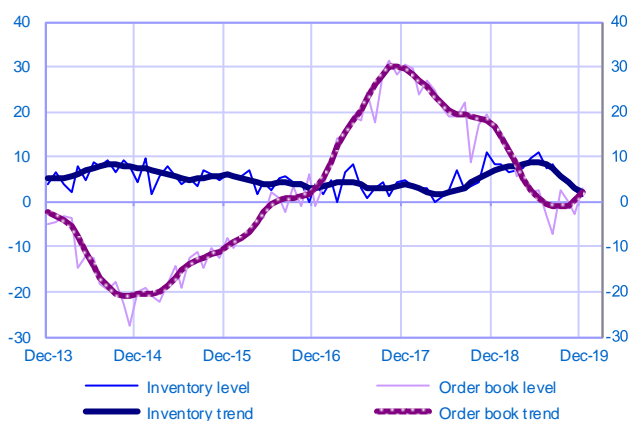
Changes in production

Balance of opinions, SA-WDA



Inventories and order book level

Balance of opinions, SA-WDA



December	Production	Deliveries	Orders	Inventories	Order books	Capacity Utilisation Rate	Production forecasts
Electrical, electronic and computer equipment and other machinery	-1	0	-1	2	7	79	5
Computer, electronic and optical products	5	4	-3	4	20	83	16
Electrical equipment	-4	1	2	0	-3	77	-1
Machinery and equipment	-5	-9	0	1	3	76	7

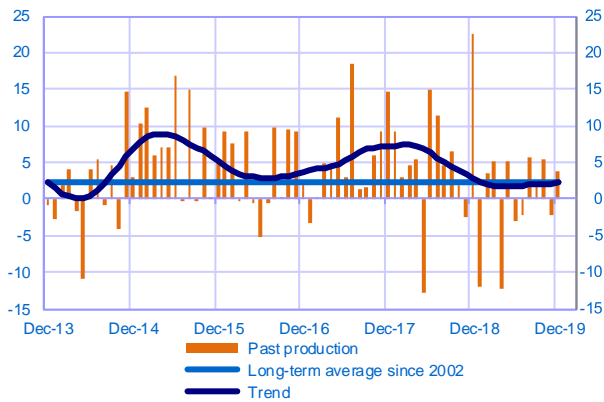
The aggregated and by sub-sector series are seasonally adjusted separately: the seasonally adjusted series do not represent the sum of the seasonally adjusted components.

Transport equipment (14% of value added in manufacturing industry)

Total

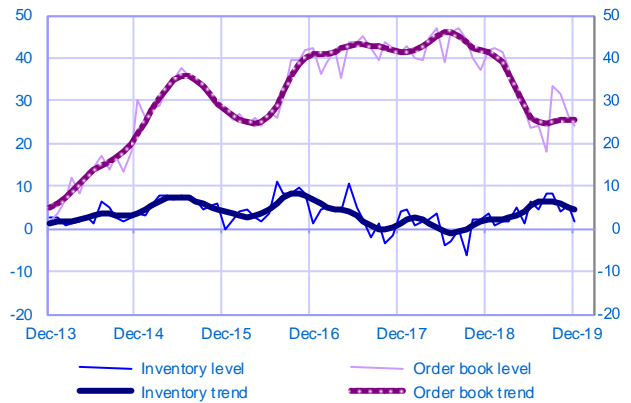
Changes in production

Balance of opinions, SA-WDA



Inventories and order book level

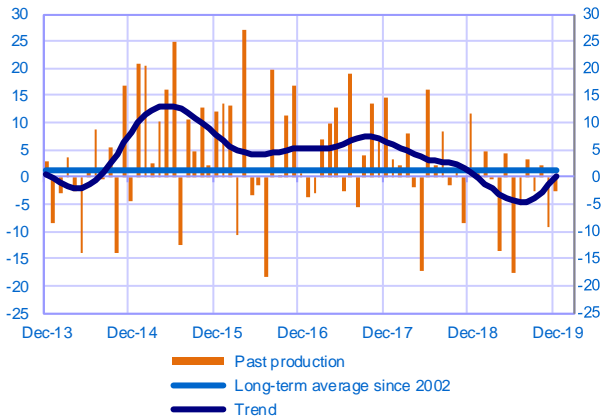
Balance of opinions, SA-WDA



Automotive industry (7% of value added)

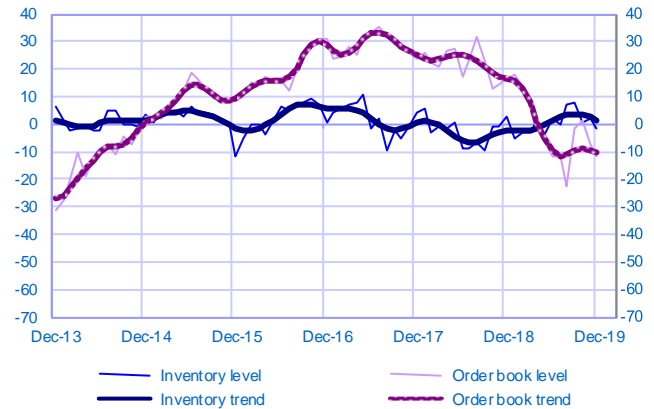
Changes in production

Balance of opinions, SA-WDA



Inventories and order book level

Balance of opinions, SA-WDA

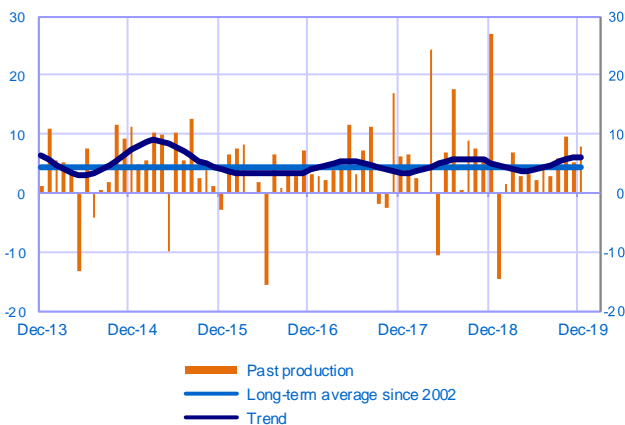


Other transport equipment (7% of value added)

(Shipbuilding, aircraft and rail construction)

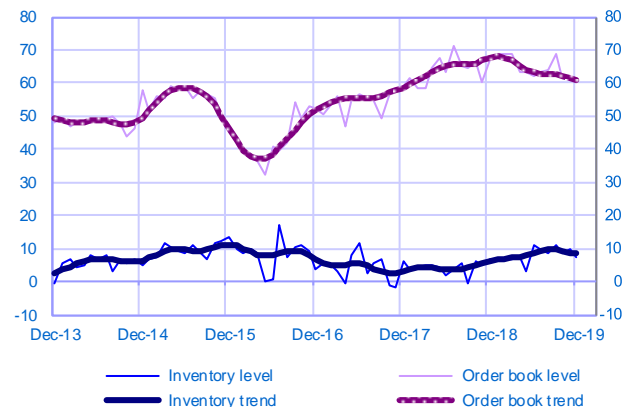
Changes in production

Balance of opinions, SA-WDA



Inventories and order book level

Balance of opinions, SA-WDA



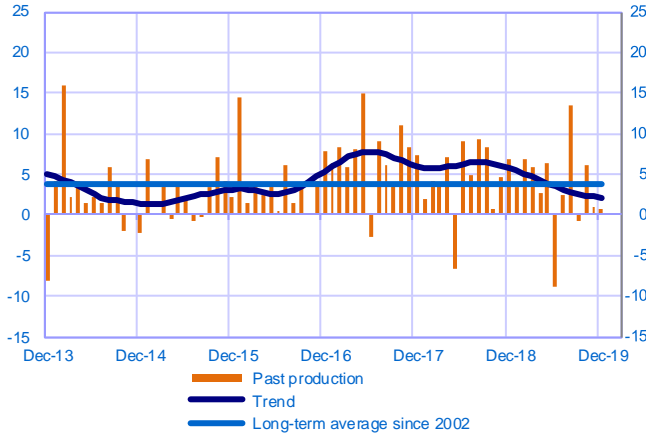
December	Production	Deliveries	Orders	Inventories	Order books	Capacity Utilisation Rate	Production forecasts
Transport equipment	4	-2	-4	2	24	80	-2
Automotive industry	-3	2	-13	-2	-12	73	-1
Other transport equipment	8	-4	5	7	61	87	-7

The aggregated and by sub-sector series are seasonally adjusted separately: the seasonally adjusted series do not represent the sum of the seasonally adjusted components.

Other manufacturing (54% of value added in manufacturing industry) Total

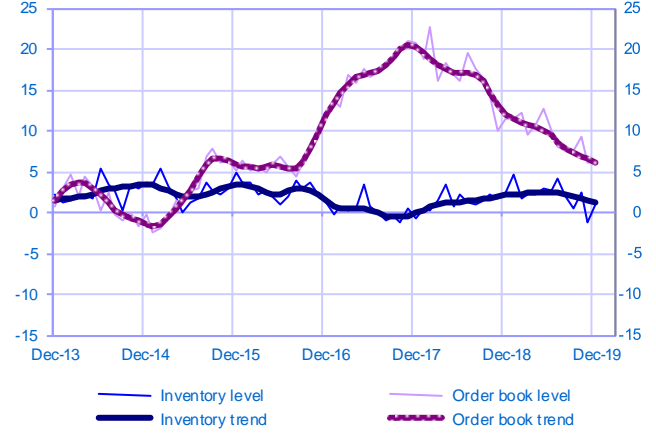
Changes in production

Balance of opinions, SA-WDA



Inventories and order book level

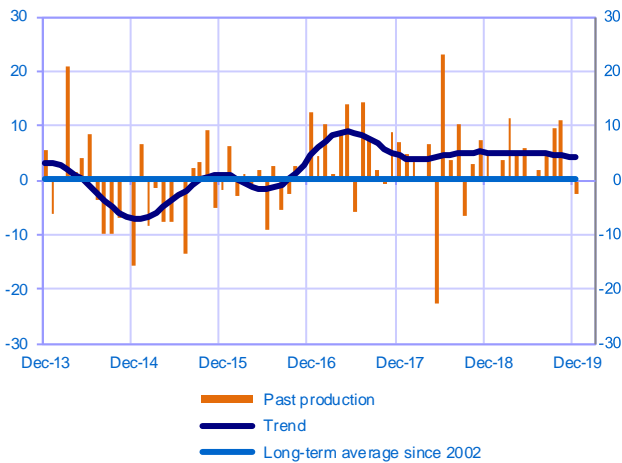
Balance of opinions, SA-WDA



Textiles, wearing apparel, leather and related products (3% of value added)

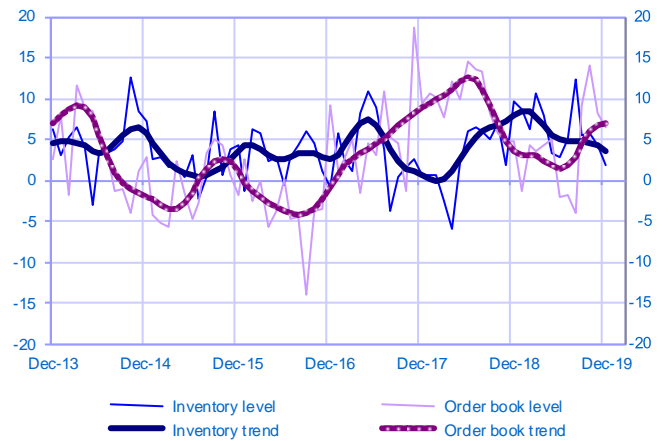
Changes in production

Balance of opinions, SA-WDA



Inventories and order book level

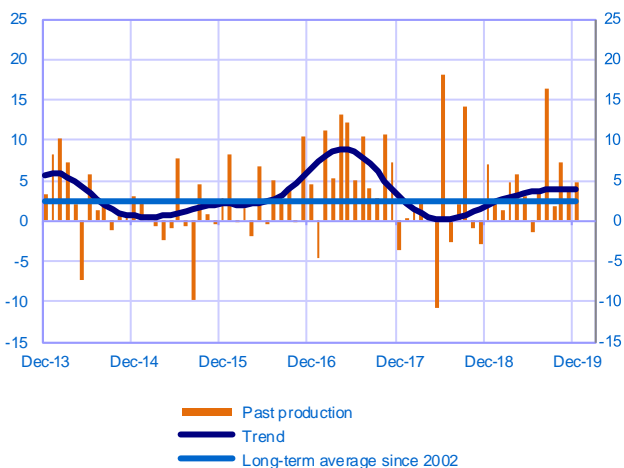
Balance of opinions, SA-WDA



Wood, paper and printing (6% of value added)

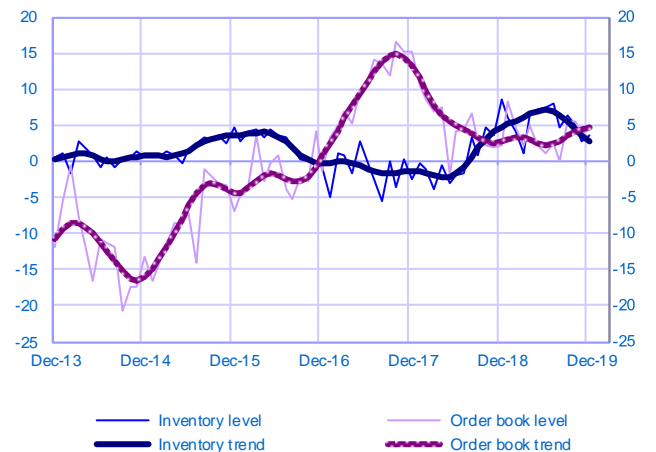
Changes in production

Balance of opinions, SA-WDA



Inventories and order book level

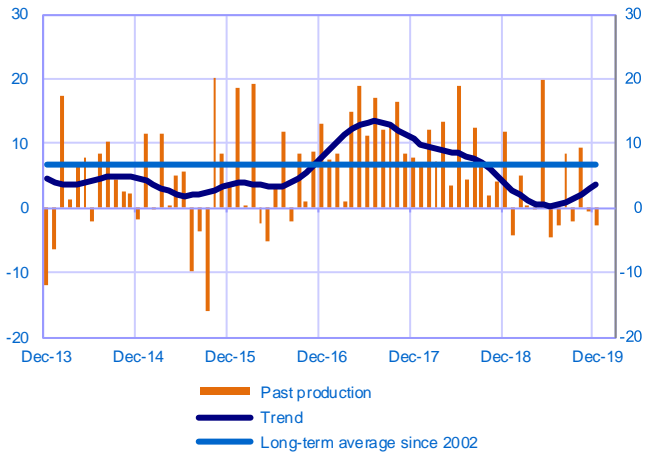
Balance of opinions, SA-WDA



Chemicals industry (8% of value added)

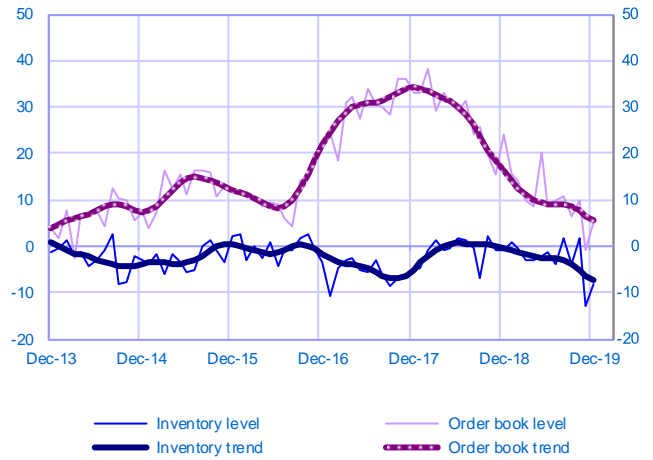
Changes in production

Balance of opinions, SA-WDA



Inventories and order book level

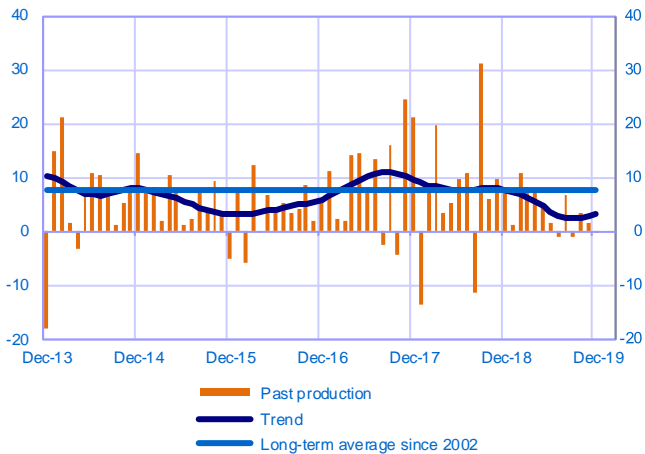
Balance of opinions, SA-WDA



Pharmaceutical industry (5% of value added)

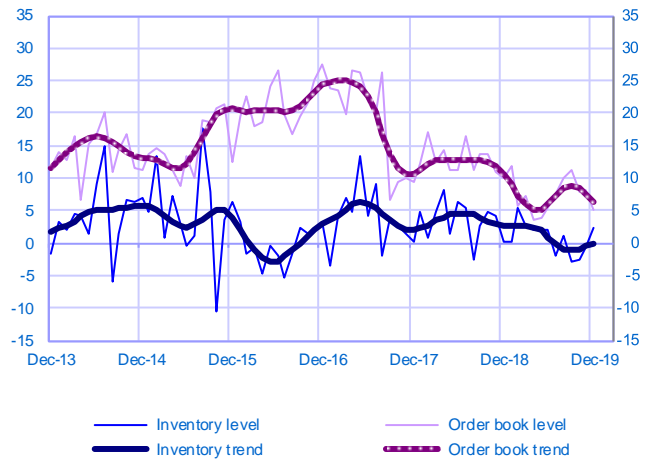
Changes in production

Balance of opinions, SA-WDA



Inventories and order book level

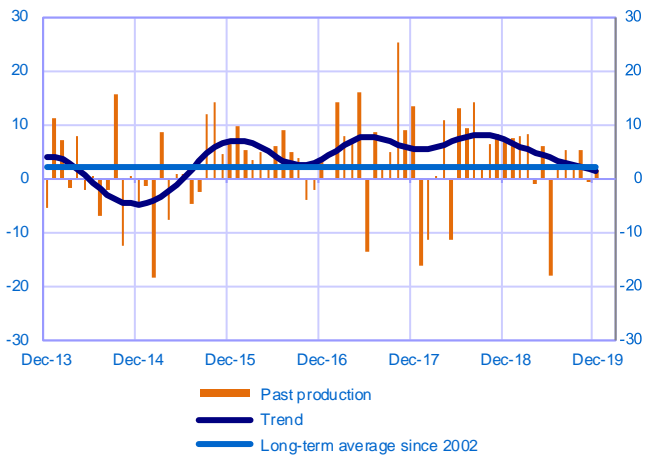
Balance of opinions, SA-WDA



Rubber, plastic products and other non-metallic mineral products (10% of value added)

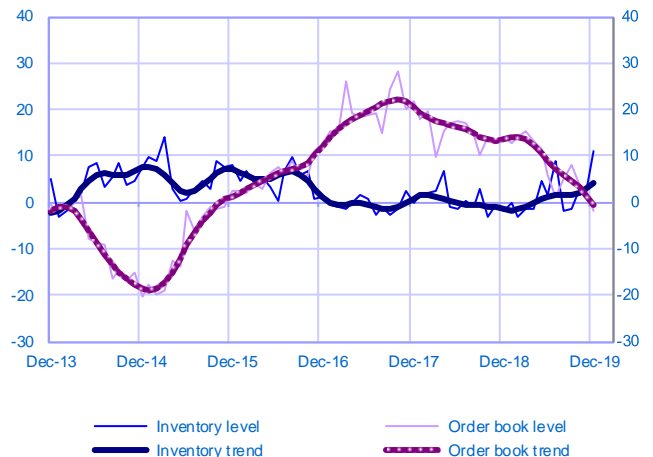
Changes in production

Balance of opinions, SA-WDA



Inventories and order book level

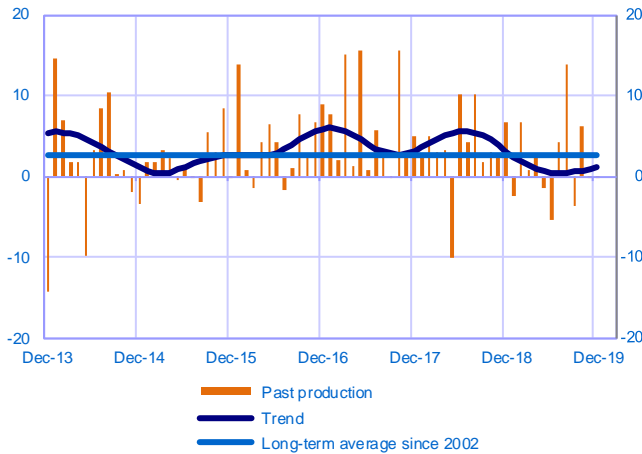
Balance of opinions, SA-WDA



Metal and metal products manufacturing (12% of value added)

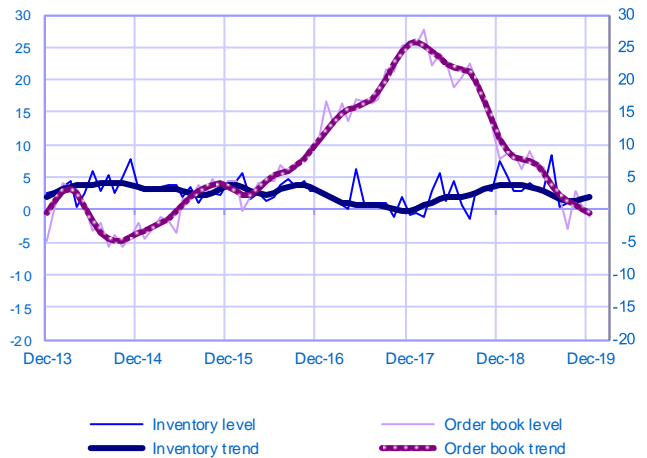
Changes in production

Balance of opinions, SA-WDA



Inventories and order book level

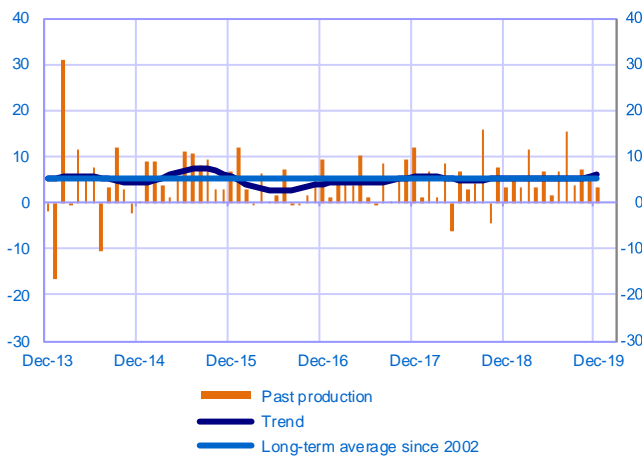
Balance of opinions, SA-WDA



Other manufacturing industries (10% of value added)
(Including repair and installation of machinery)

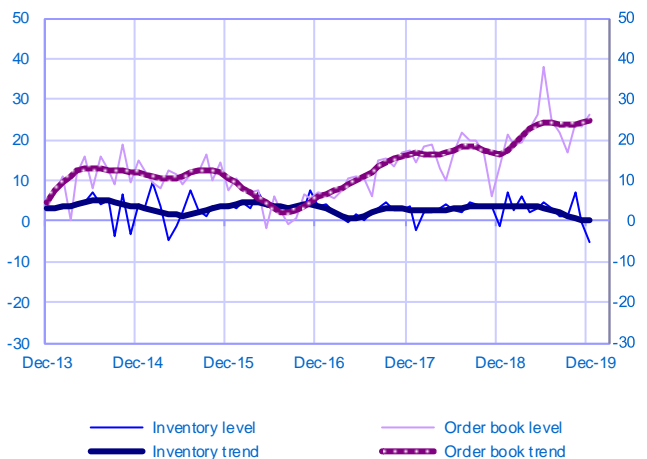
Changes in production

Balance of opinions, SA-WDA



Inventories and order book level

Balance of opinions, SA-WDA



December	Production	Deliveries	Orders	Inventories	Order books	Capacity Utilisation Rate	Production forecasts
Other manufacturing	1	3	0	1	6	78	2
Textiles, wearing apparel, leather and related products	-3	4	-1	2	6	76	2
Wood paper and printing	5	6	3	3	4	77	5
Chemicals industry	-3	-1	-7	-8	5	80	1
Pharmaceutical industry	0	0	3	2	5	82	0
Rubber, plastic products and other non-metallic mineral products	2	3	-4	11	-2	77	-1
Metal and metal products manufacturing	0	0	1	2	-1	75	5
Other manufacturing industries (including repair and installation of machinery)	3	6	4	-5	26	81	5

The aggregated and by sub-sector series are seasonally adjusted separately: the seasonally adjusted series do not represent the sum of the seasonally adjusted components.

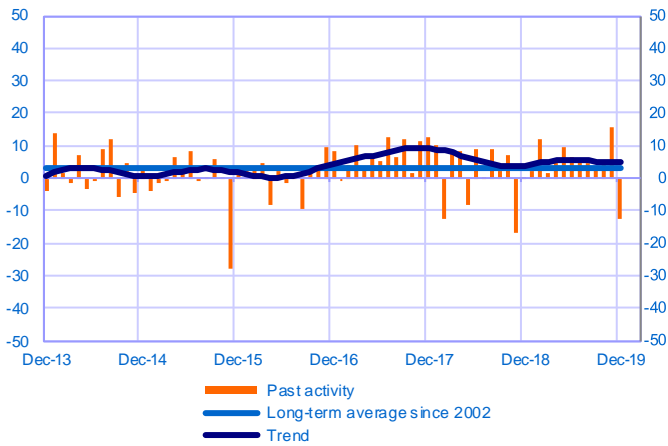
SERVICES

Transport, automotive repair, accommodation and food services
(23% of value added in market services)

Total

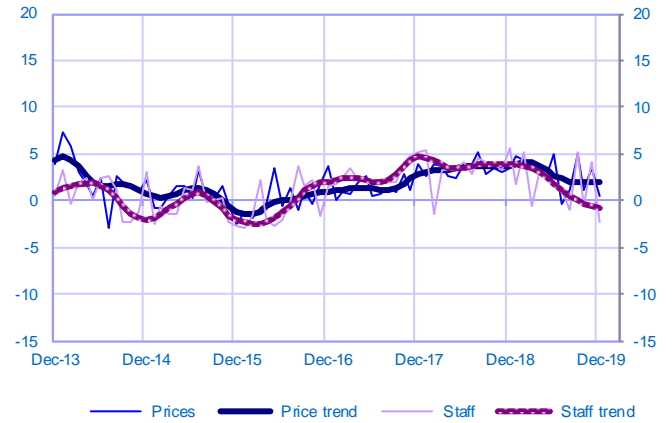
Changes in activity

Balance of opinions, SA-WDA



Changes in staff and prices

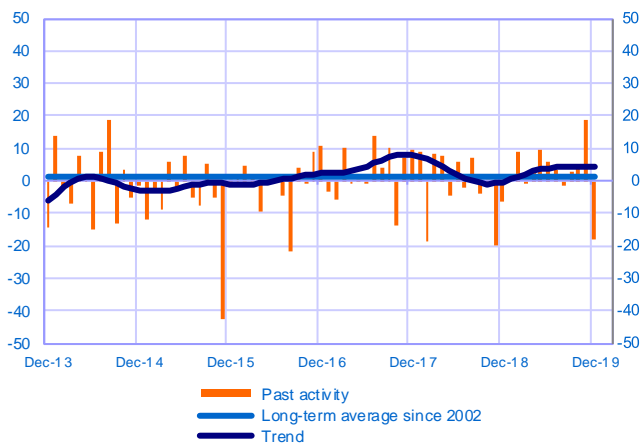
Balance of opinions, SA-WDA



Accommodation and food services (13% of value added)

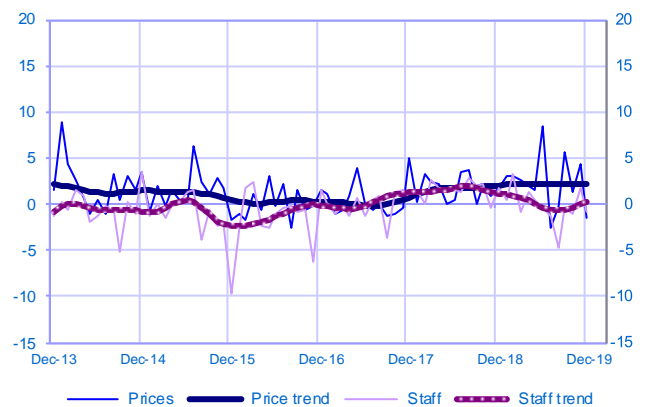
Changes in activity

Balance of opinions, SA-WDA



Changes in staff and prices

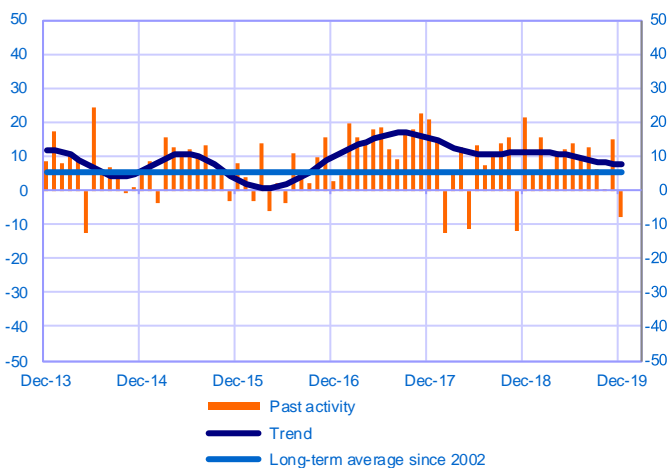
Balance of opinions, SA-WDA



Transportation and storage (7% of value added)

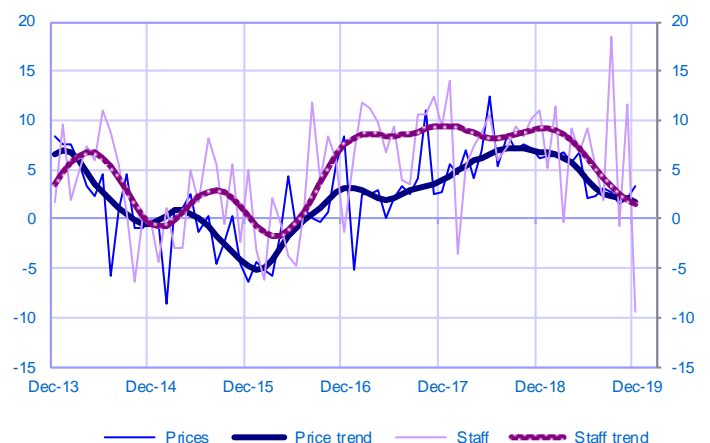
Changes in activity

Balance of opinions, SA-WDA



Changes in staff and prices

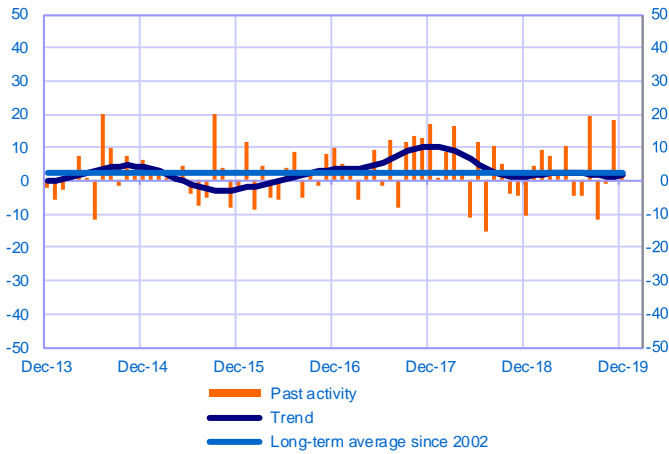
Balance of opinions, SA-WDA



Automotive repair (3% of value added)

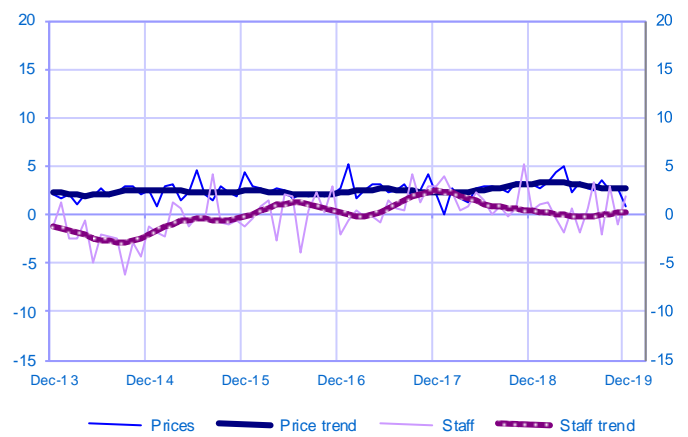
Changes in activity

Balance of opinions, SA-WDA



Changes in staff and prices

Balance of opinions, SA-WDA



December	Activity	Activity trend	Demand	Prices	Staff	Cash positions	Activity forecasts
Transport, automotive repair, accommodation and food services	-13	5	-11	0	-2	5	5
Accommodation and food services activities	-18	4	-17	-2	-1	1	2
Transportation and storage	-8	7	-6	3	-10	8	9
Automotive repair	3	2	1	1	2	2	7

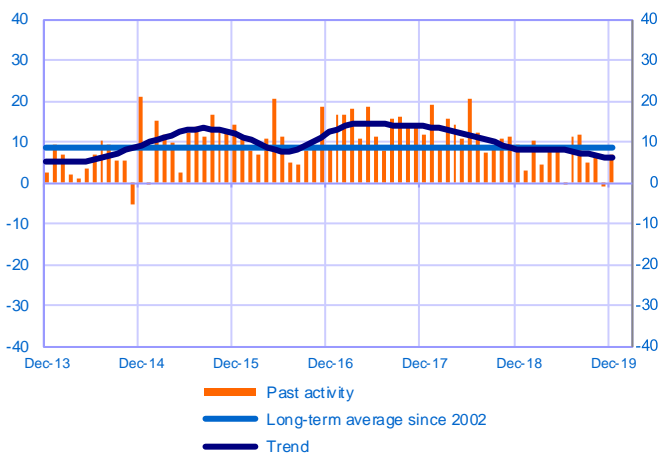
The aggregated and by sub-sector series are seasonally adjusted separately: the seasonally adjusted series do not represent the sum of the seasonally adjusted components.

Professional, scientific and technical activities and administrative services (52% of value added in market services)

Total

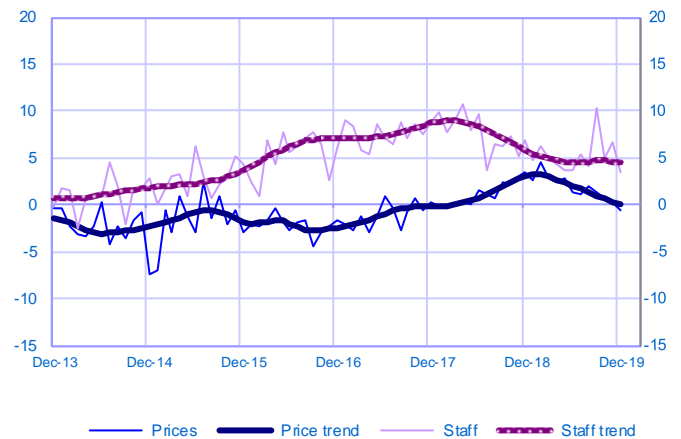
Changes in activity

Balance of opinions, SA-WDA



Changes in staff and prices

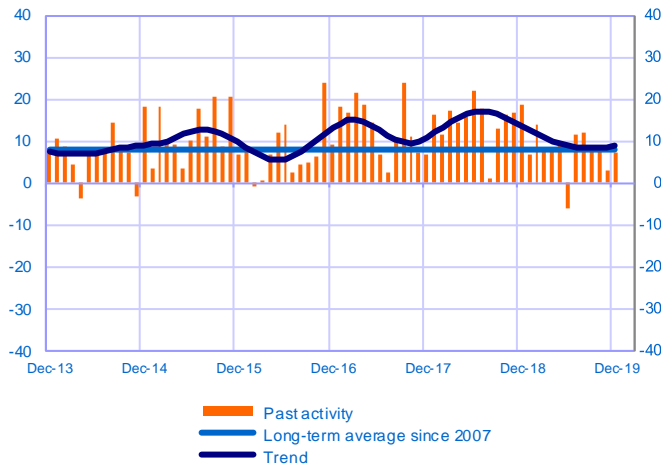
Balance of opinions, SA-WDA



Management consultancy and legal and accounting activities (21 % of value added)

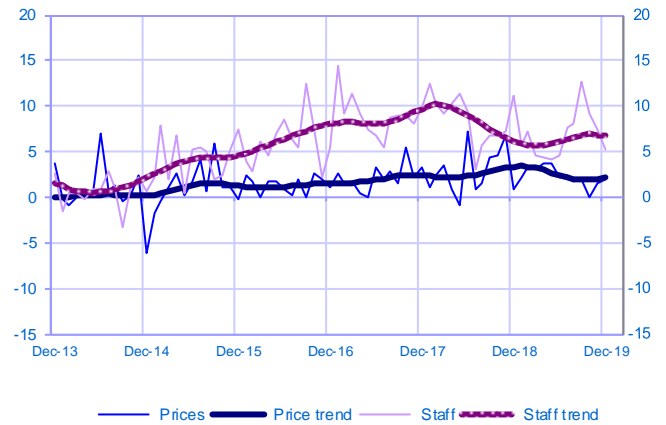
Changes in activity

Balance of opinions, SA-WDA



Changes in staff and prices

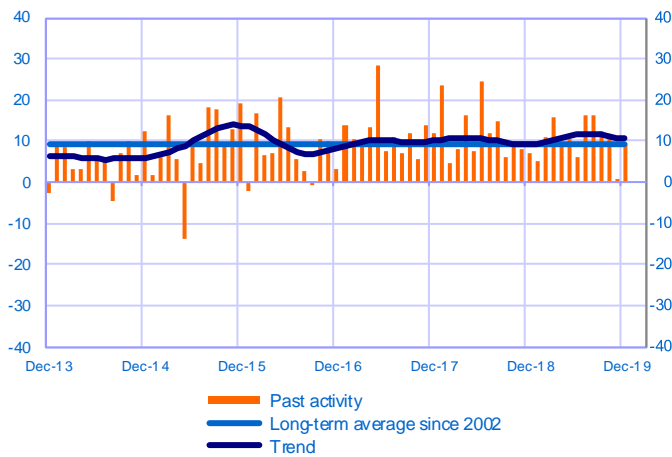
Balance of opinions, SA-WDA



Architecture, engineering, technical testing and analysis activities (9% of value added)

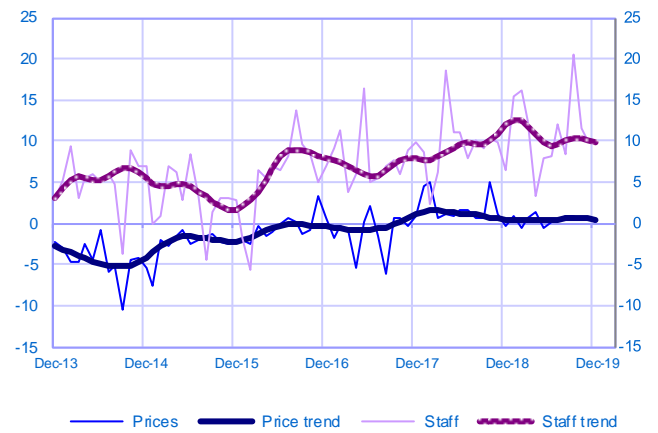
Changes in activity

Balance of opinions, SA-WDA



Changes in staff and prices

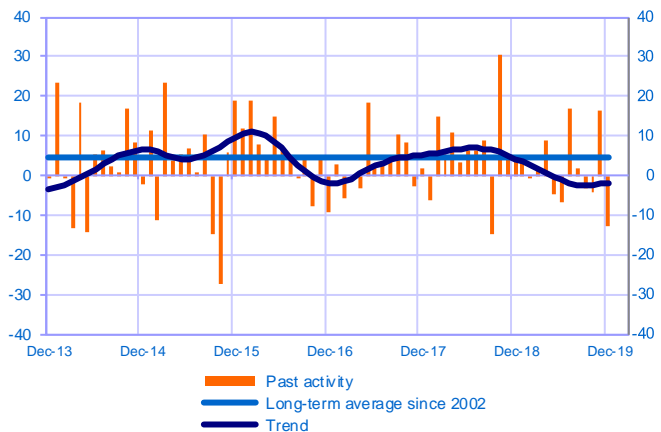
Balance of opinions, SA-WDA



Advertising and market research (3% of value added)

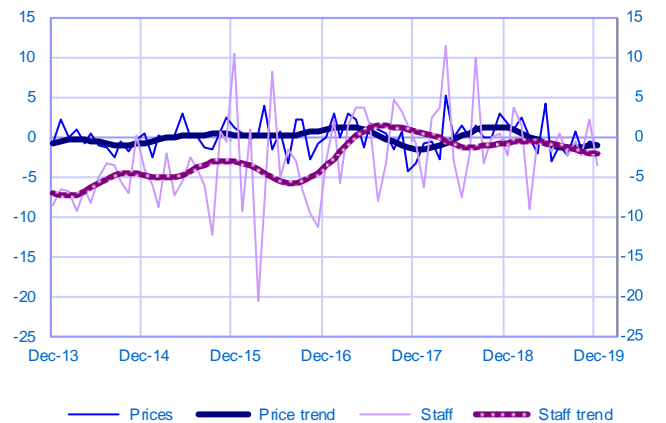
Changes in activity

Balance of opinions, SA-WDA



Changes in staff and prices

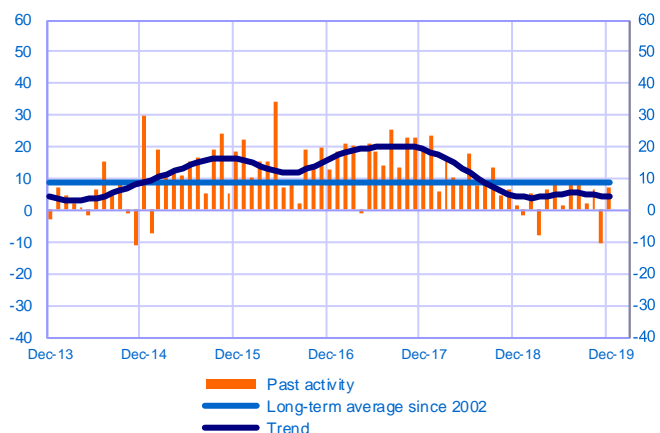
Balance of opinions, SA-WDA



Administrative and support service activities (19% of value added)

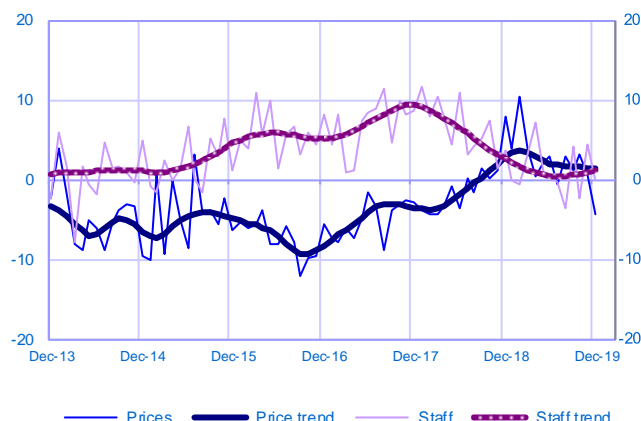
Changes in activity

Balance of opinions, SA-WDA



Changes in staff and prices

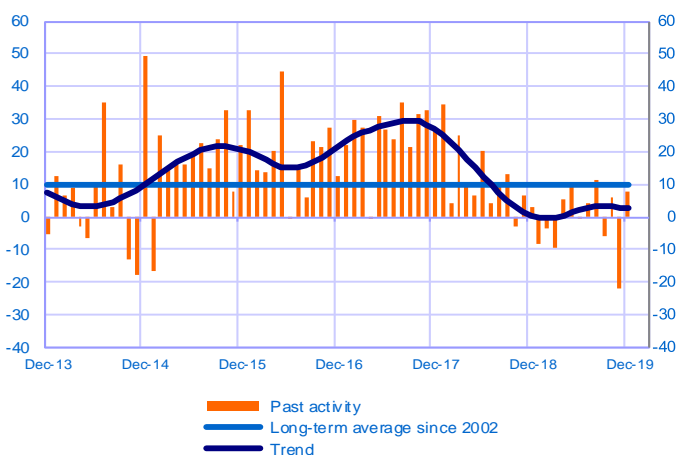
Balance of opinions, SA-WDA



O/W Temporary employment agency activities (11% of value added)

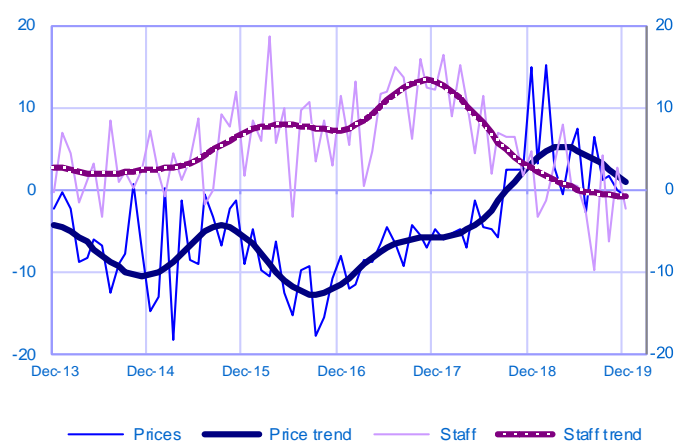
Changes in activity

Balance of opinions, SA-WDA



Changes in staff and prices

Balance of opinions, SA-WDA



December	Activity	Activity trend	Demand	Prices	Staff	Cash positions	Activity forecasts
Professional scientific and technical activities and administrative services	7	6	8	-1	3	10	7
Management consultancy and legal and accounting activities	7	9	6	2	5	24	9
Architecture, engineering and technical testing	10	11	15	0	10	-8	12
Advertising and market research	-13	-2	-7	-1	-4	12	1
Administrative and support service activities	7	4	8	-4	0	8	0
<i>O/W Temporary employment agency activities</i>	8	2	9	-1	-2	13	-9

The aggregated and by sub-sector series are seasonally adjusted separately: the seasonally adjusted series do not represent the sum of the seasonally adjusted components.

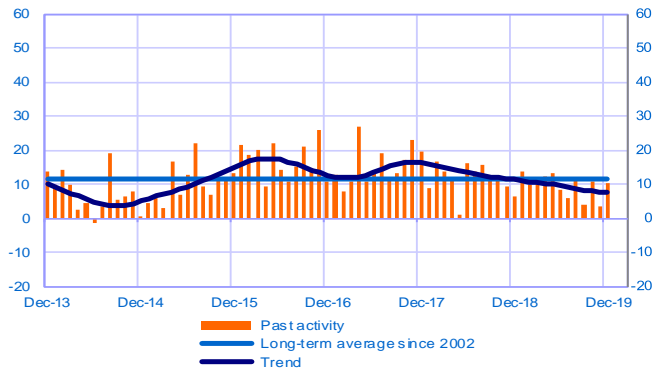
Information and communication

(19% of value added in market services)

Total

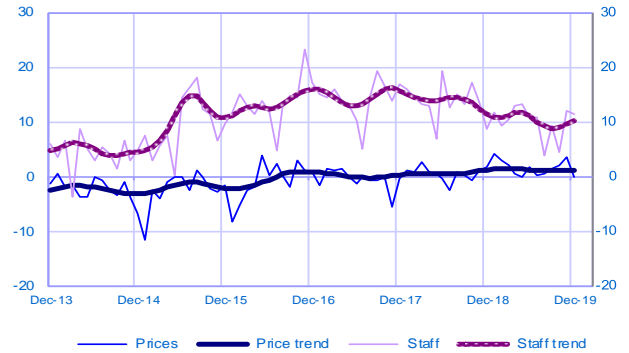
Changes in activity

Balance of opinions, SA-WDA



Changes in staff and prices

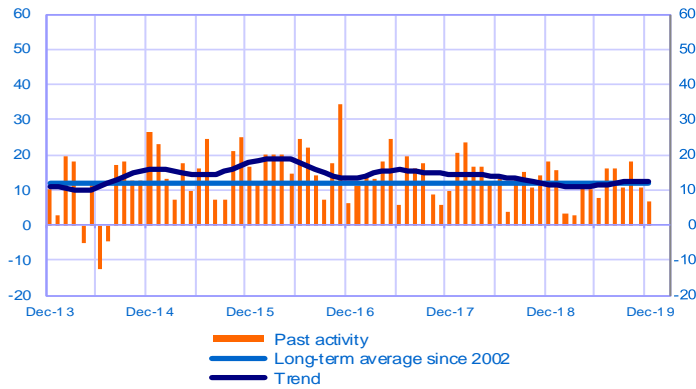
Balance of opinions, SA-WDA



Publishing (4% of value added)

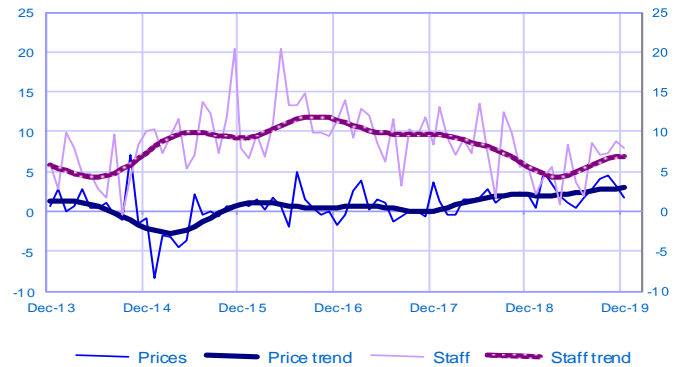
Changes in activity

Balance of opinions, SA-WDA



Changes in staff and prices

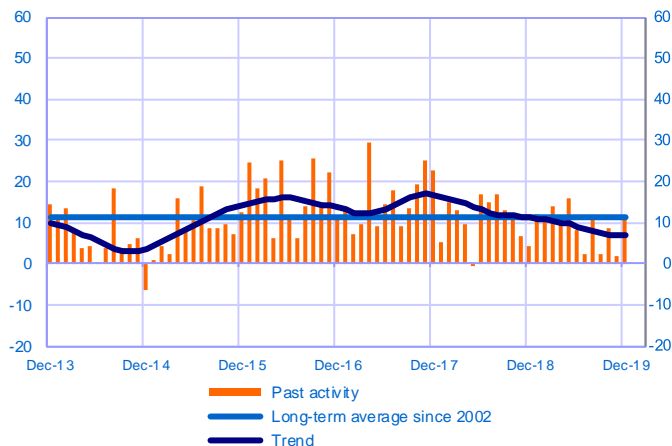
Balance of opinions, SA-WDA



Computer and information services (15% of value added)

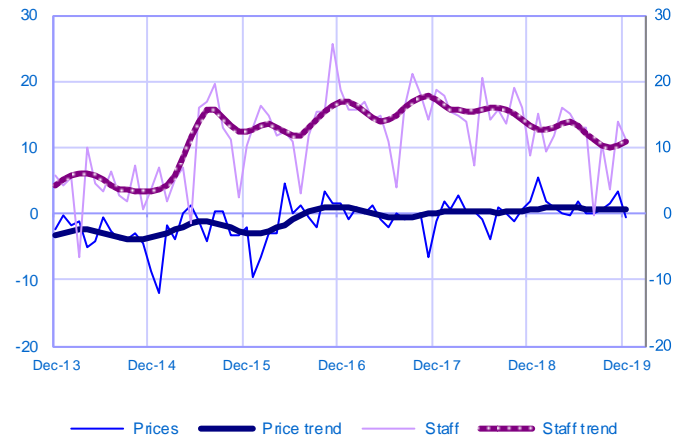
Changes in activity

Balance of opinions, SA-WDA



Changes in staff and prices

Balance of opinions, SA-WDA



December	Activity	Activity trend	Demand	Prices	Staff	Cash positions	Activity forecasts
Information and communication	10	7	9	0	11	11	6
Publishing	7	12	4	2	8	25	11
Computer and information services	11	7	12	0	11	5	3

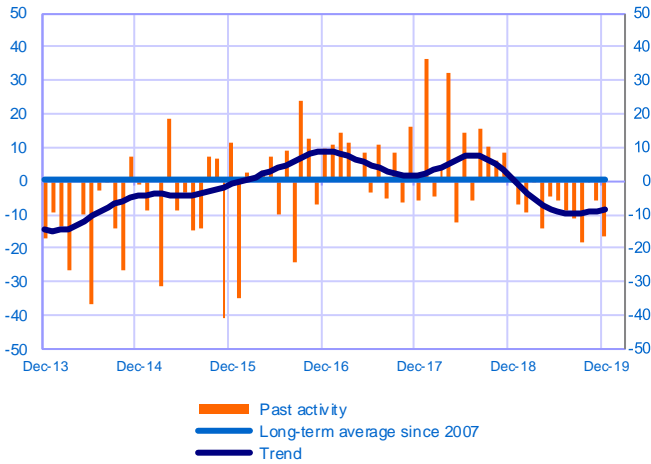
The aggregated and by sub-sector series are seasonally adjusted separately: the seasonally adjusted series do not represent the sum of the seasonally adjusted components.

Recreation activities, personal services and activities of households as employers (6% of value added in market services)

Total

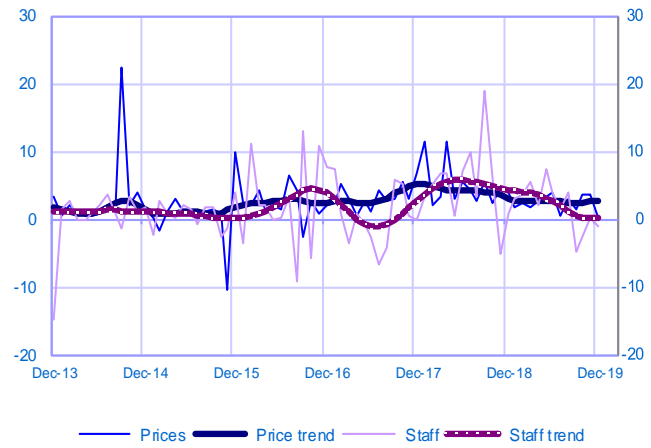
Changes in activity

Balance of opinions, SA-WDA



Changes in staff and prices

Balance of opinions, SA-WDA



December	Activity	Activity trend	Demand	Prices	Staff	Cash positions	Activity forecasts
Recreation activities, personal services and activities of households as employers	-16	-9	-4	0	-1	4	10

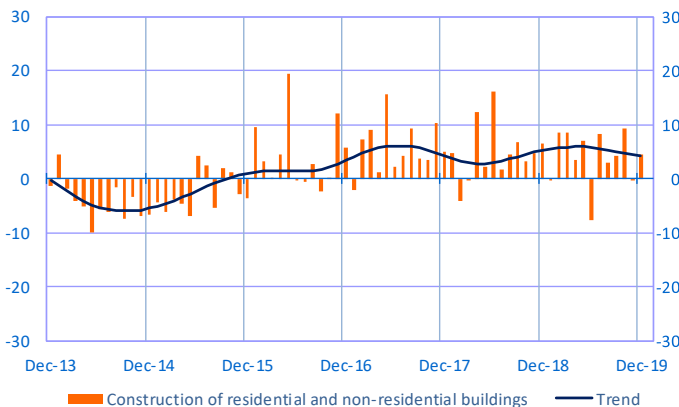
CONSTRUCTION

Construction of residential and non-residential buildings (29% of value added)

Specialised construction activities (71% of value added)

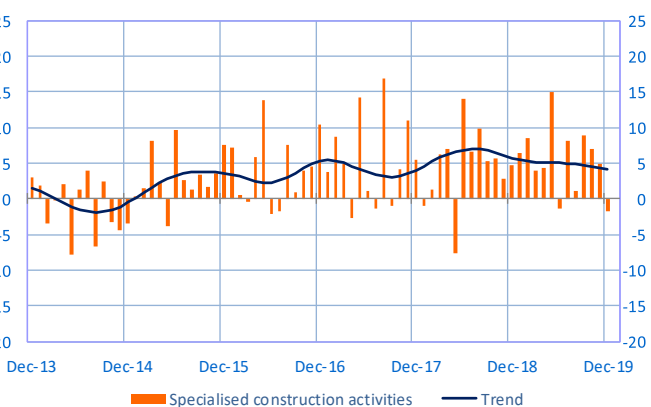
Changes in activity

Balance of opinions, SA-WDA



Changes in activity

Balance of opinions, SA-WDA



December	Activity	Order Books	Prices	Staff	Activity forecasts
Construction of residential and non-residential buildings	5	26	3	4	4
Specialised construction activities	-2	31	3	1	7

The aggregated and by sub-sector series are seasonally adjusted separately: the seasonally adjusted series do not represent the sum of the seasonally adjusted components.

