

**Business survey at the end of May 2019**

**Manufacturing industry, market services and construction: sectoral level information**

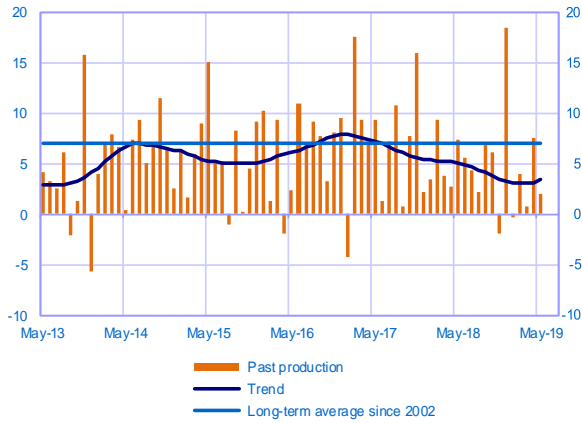
**MANUFACTURING INDUSTRY**

**Manufacture of food products and beverages**

(15% of value added in manufacturing industry)

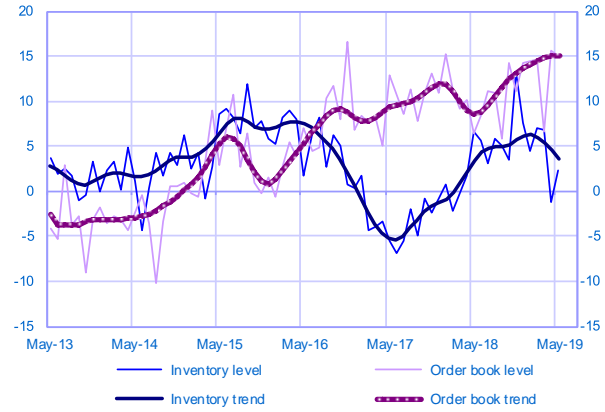
Changes in production

Balance of opinions, SA-WDA



Inventories and order book level

Balance of opinions, SA-WDA



May	Production	Deliveries	Orders	Inventories	Order books	Capacity Utilisation Rate	Production forecasts
Manufacture of food products and beverages	2	10	9	2	15	80	6

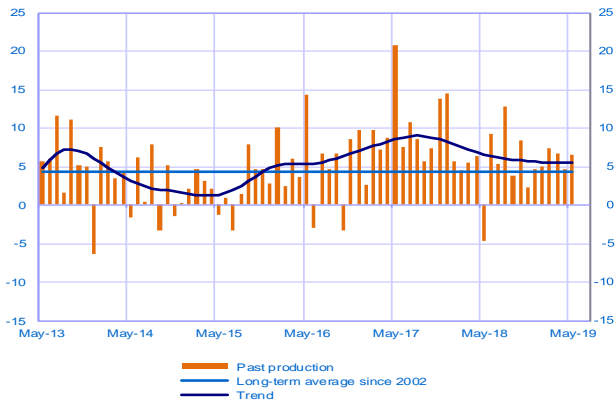
**Electrical, electronic and computer equipment and other machinery**

(17% of value added in manufacturing industry)

**Total**

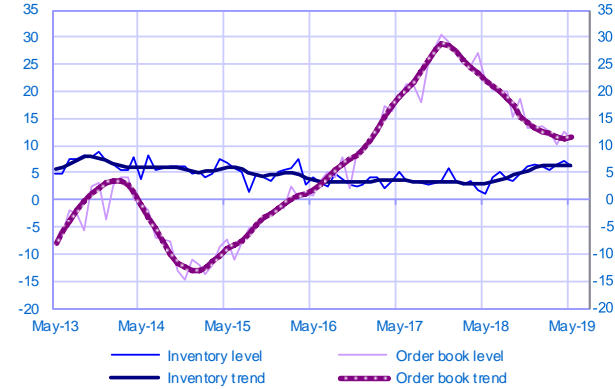
Changes in production

Balance of opinions, SA-WDA



Inventories and order book level

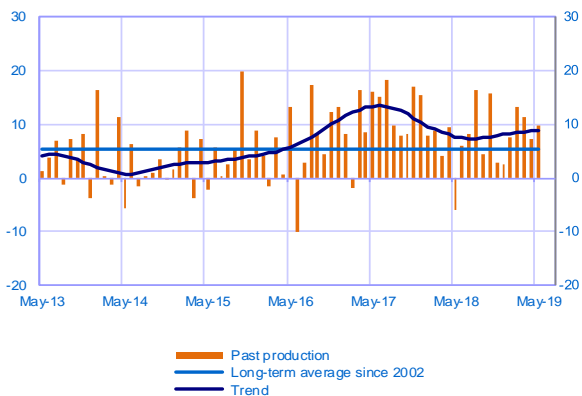
Balance of opinions, SA-WDA



**Computer, electronic and optical products (5% of value added)**

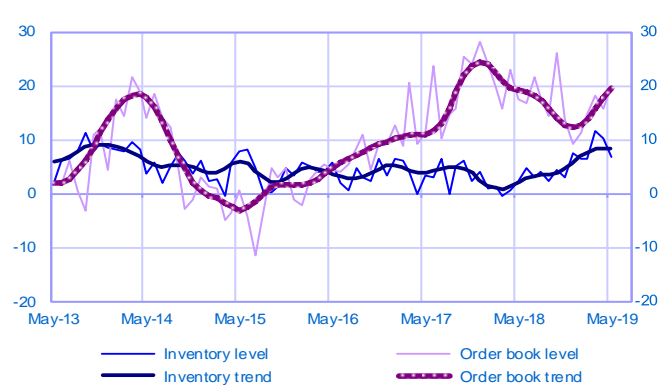
Changes in production

Balance of opinions, SA-WDA



Inventories and order book level

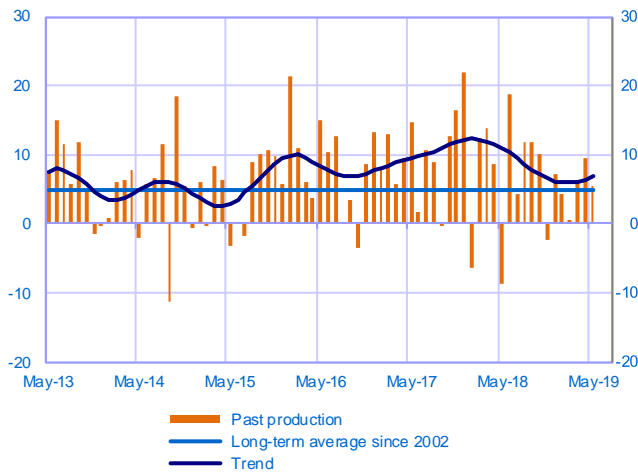
Balance of opinions, SA-WDA



**Electrical equipment (4% of value added)**

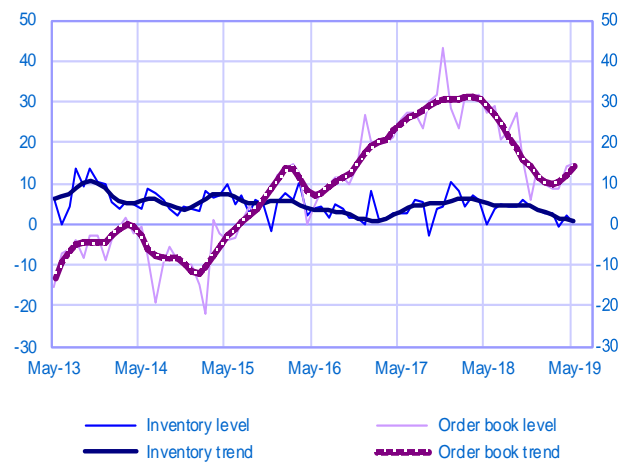
Changes in production

Balance of opinions, SA-WDA



Inventories and order book level

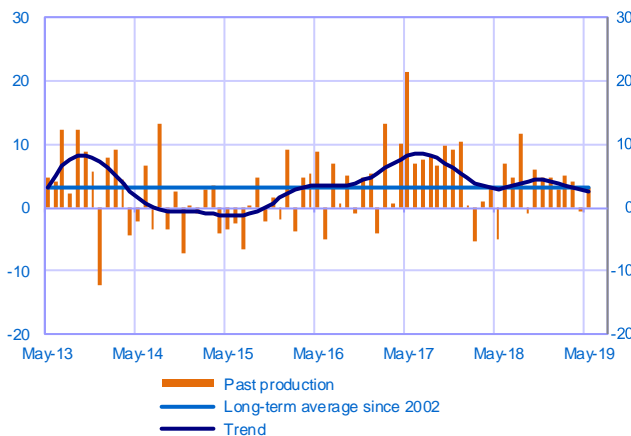
Balance of opinions, SA-WDA



**Machinery and equipment (8% of value added)**

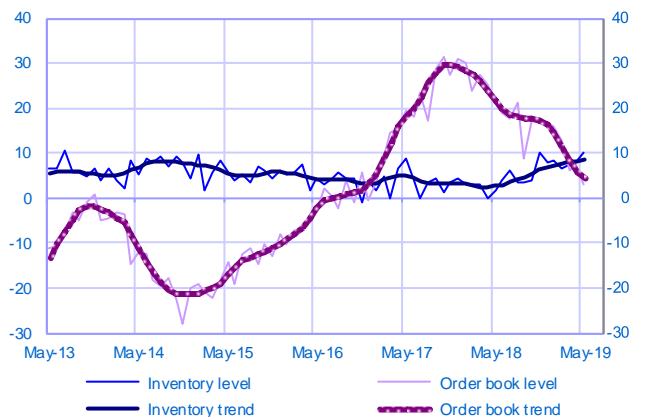
Changes in production

Balance of opinions, SA-WDA



Inventories and order book level

Balance of opinions, SA-WDA



May	Production	Deliveries	Orders	Inventories	Order books	Capacity Utilisation Rate	Production forecasts
<b>Electrical, electronic and computer equipment and other machinery</b>	<b>6</b>	<b>8</b>	<b>10</b>	<b>6</b>	<b>11</b>	<b>81</b>	<b>1</b>
Computer, electronic and optical products	10	12	8	7	20	86	2
Electrical equipment	6	12	12	1	15	80	6
Machinery and equipment	3	6	5	10	3	78	1

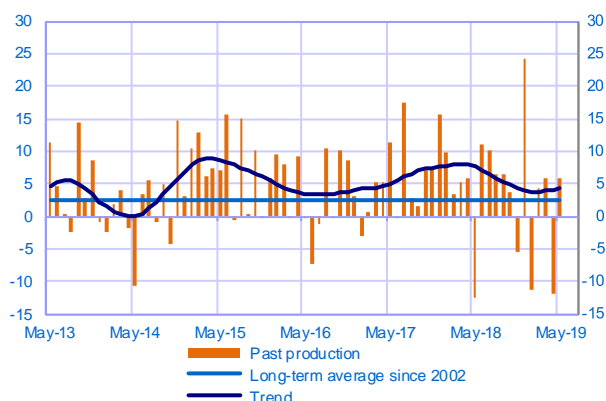
The aggregated and by sub-sector series are seasonally adjusted separately: the seasonally adjusted series do not represent the sum of the seasonally adjusted components.

## Transport equipment (14% of value added in manufacturing industry)

### Total

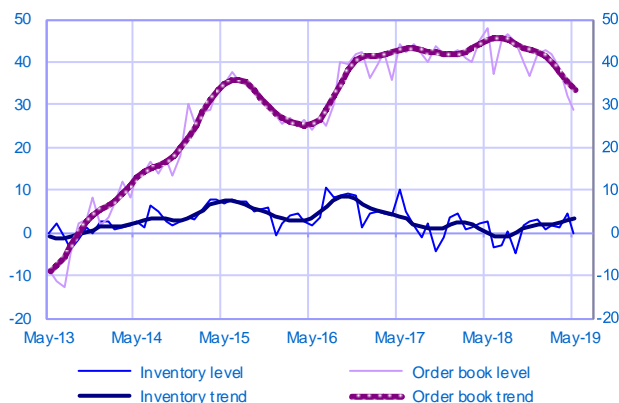
#### Changes in production

Balance of opinions, SA-WDA



#### Inventories and order book level

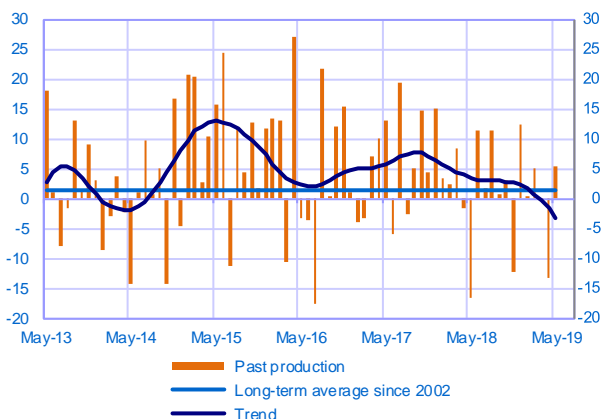
Balance of opinions, SA-WDA



## Automotive industry (7% of value added)

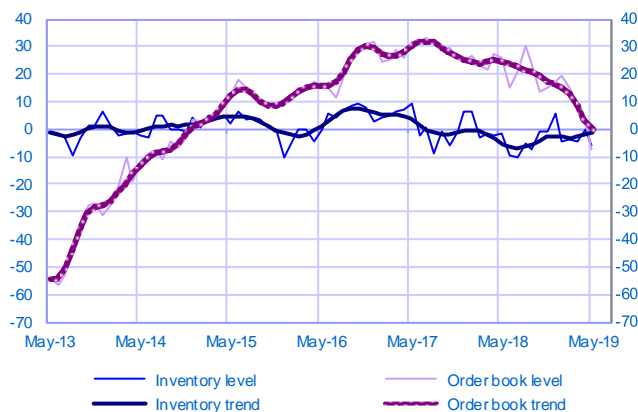
#### Changes in production

Balance of opinions, SA-WDA



#### Inventories and order book level

Balance of opinions, SA-WDA

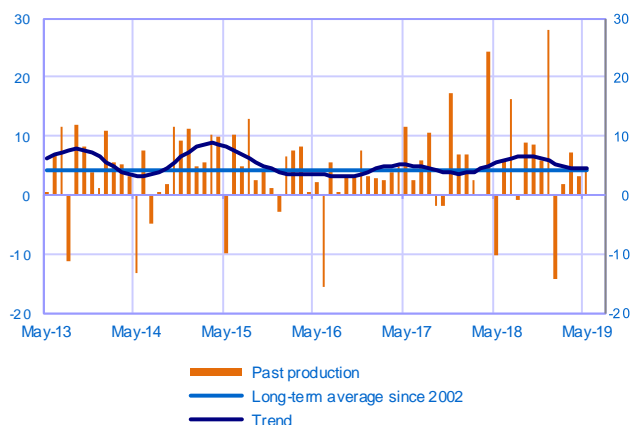


## Other transport equipment (7% of value added)

(Shipbuilding, aircraft and rail construction)

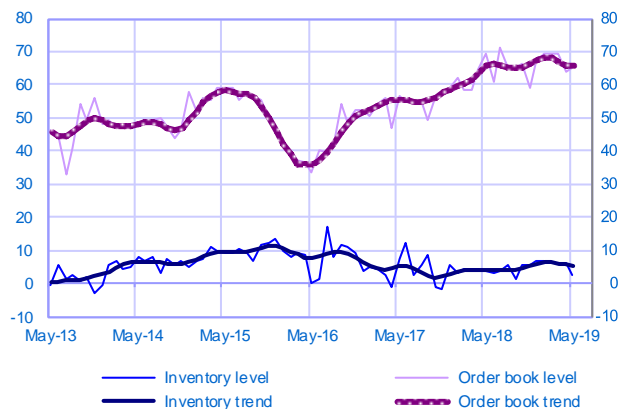
#### Changes in production

Balance of opinions, SA-WDA



#### Inventories and order book level

Balance of opinions, SA-WDA



May	Production	Deliveries	Orders	Inventories	Order books	Capacity Utilisation Rate	Production forecasts
Transport equipment	6	5	5	0	29	82	-4
Automotive industry	5	3	-1	-6	-7	76	-10
Other transport equipment	4	4	11	2	65	88	-3

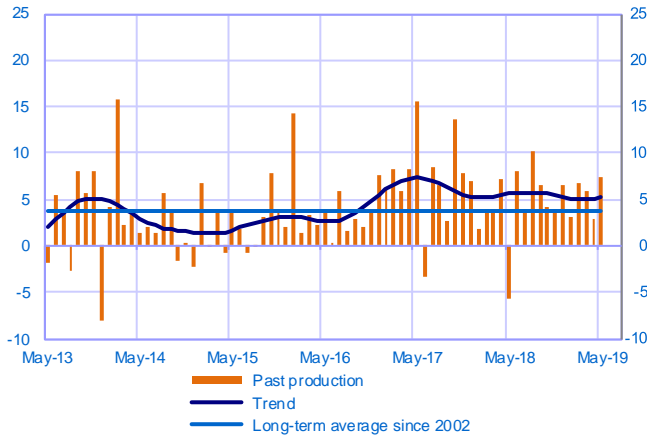
The aggregated and by sub-sector series are seasonally adjusted separately: the seasonally adjusted series do not represent the sum of the seasonally adjusted components.

Period under review: May 2019

## Other manufacturing (54% of value added in manufacturing industry) Total

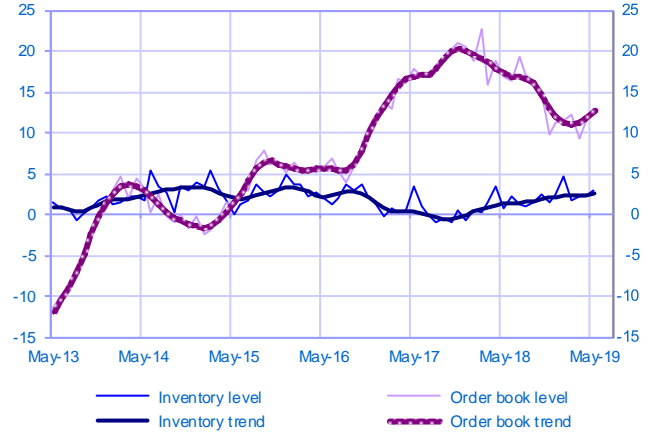
### Changes in production

Balance of opinions, SA-WDA



### Inventories and order book level

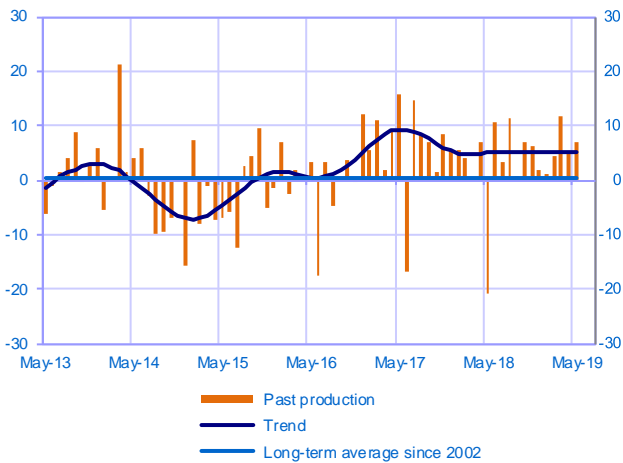
Balance of opinions, SA-WDA



## Textiles, wearing apparel, leather and related products (3% of value added)

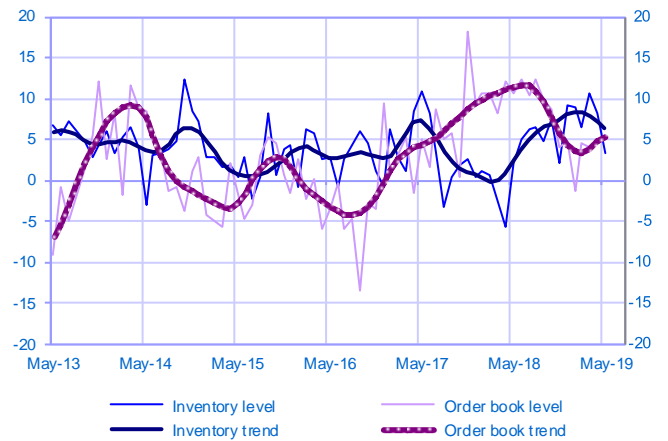
### Changes in production

Balance of opinions, SA-WDA



### Inventories and order book level

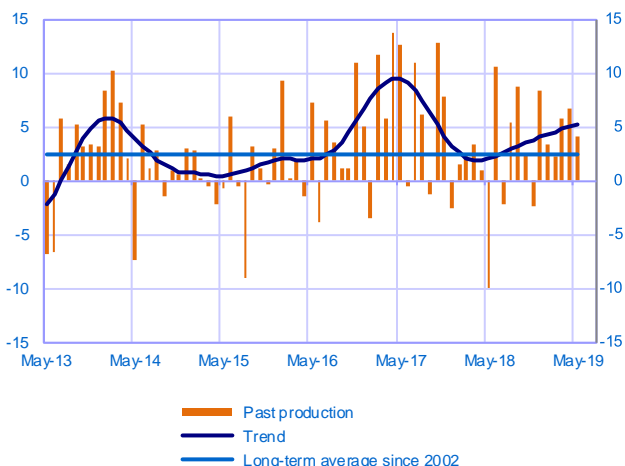
Balance of opinions, SA-WDA



## Wood, paper and printing (6% of value added)

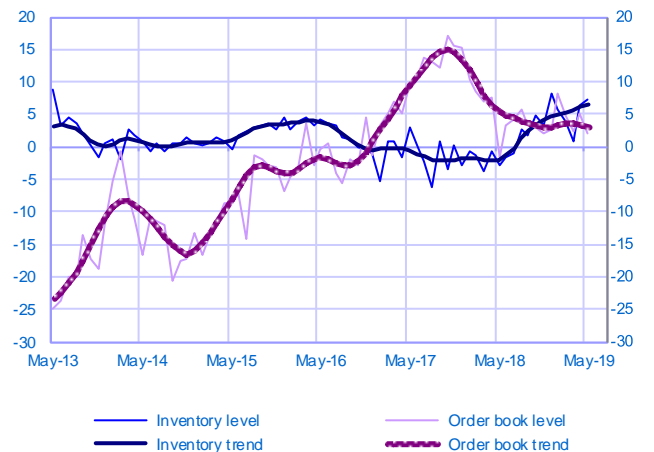
### Changes in production

Balance of opinions, SA-WDA



### Inventories and order book level

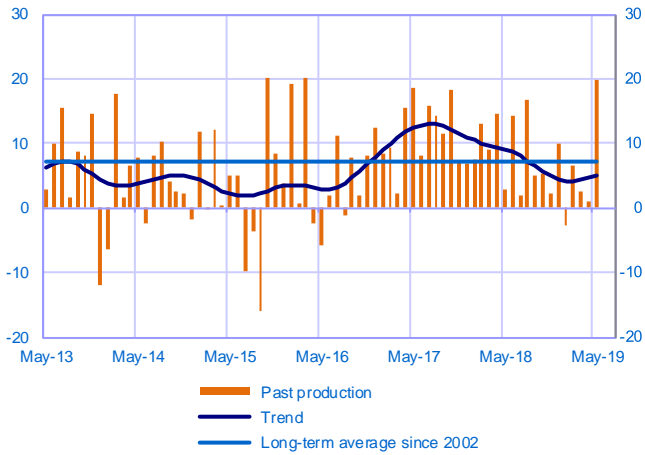
Balance of opinions, SA-WDA



**Chemicals industry (8% of value added)**

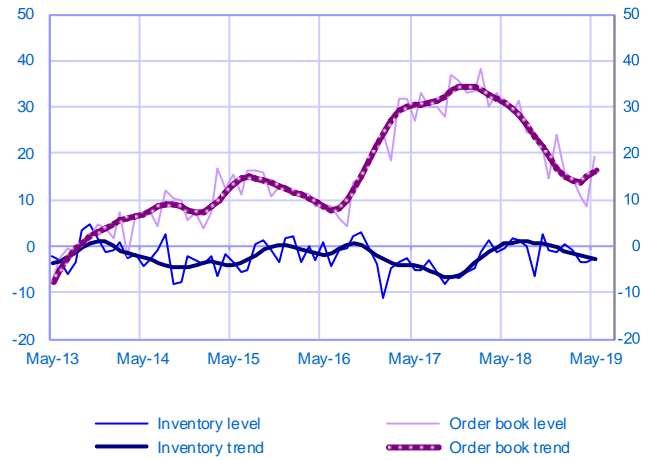
Changes in production

Balance of opinions, SA-WDA



Inventories and order book level

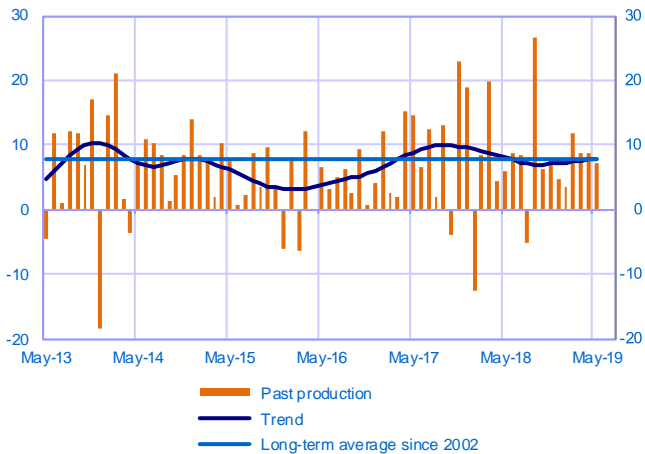
Balance of opinions, SA-WDA



**Pharmaceutical industry (5% of value added)**

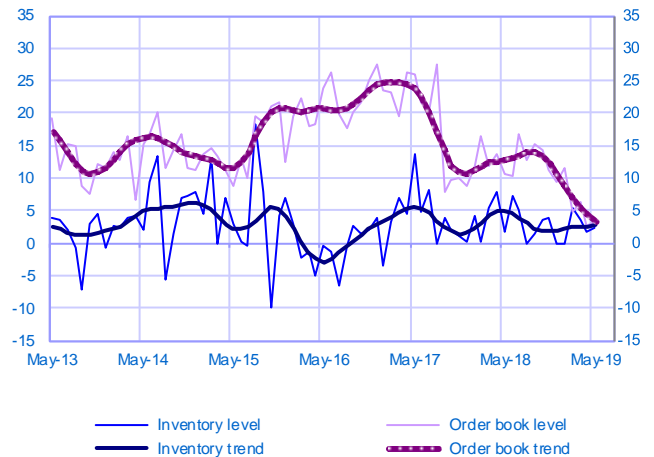
Changes in production

Balance of opinions, SA-WDA



Inventories and order book level

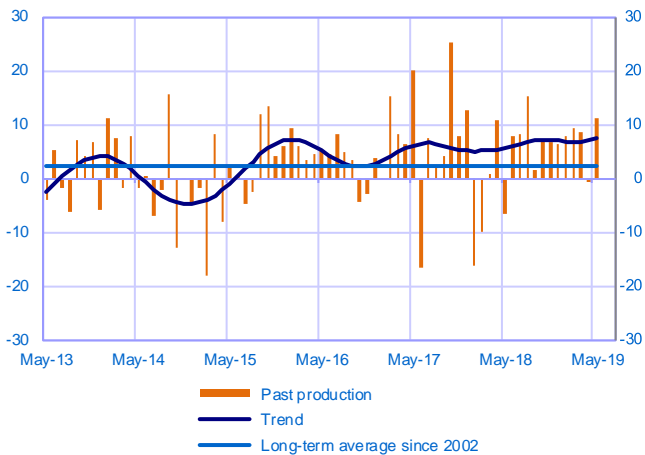
Balance of opinions, SA-WDA



**Rubber, plastic products and other non-metallic mineral products (10% of value added)**

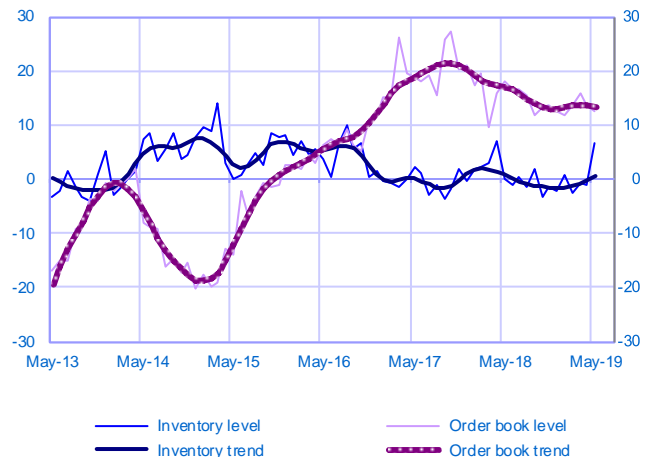
Changes in production

Balance of opinions, SA-WDA



Inventories and order book level

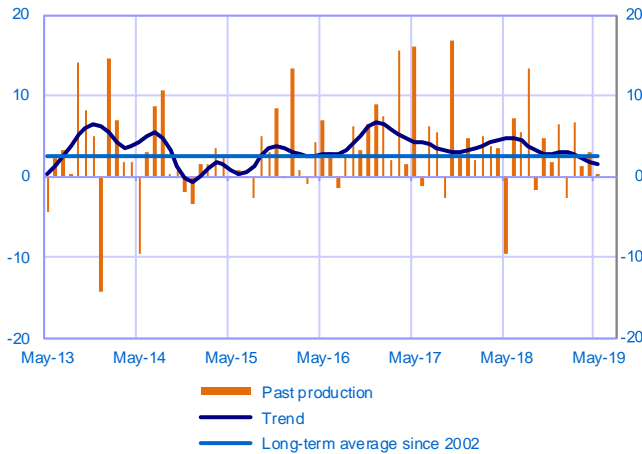
Balance of opinions, SA-WDA



**Metal and metal products manufacturing (12% of value added)**

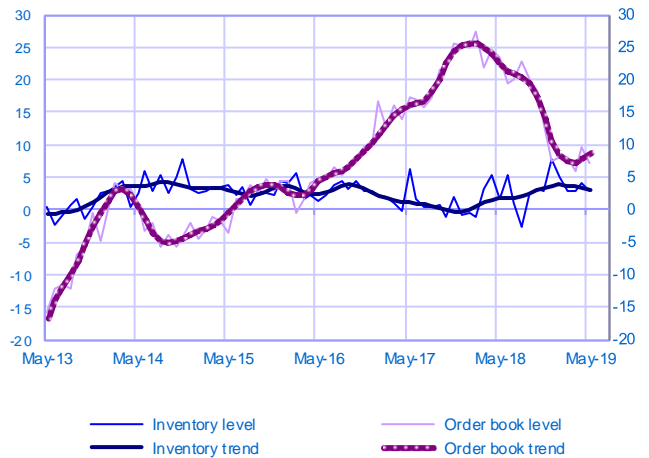
Changes in production

Balance of opinions, SA-WDA



Inventories and order book level

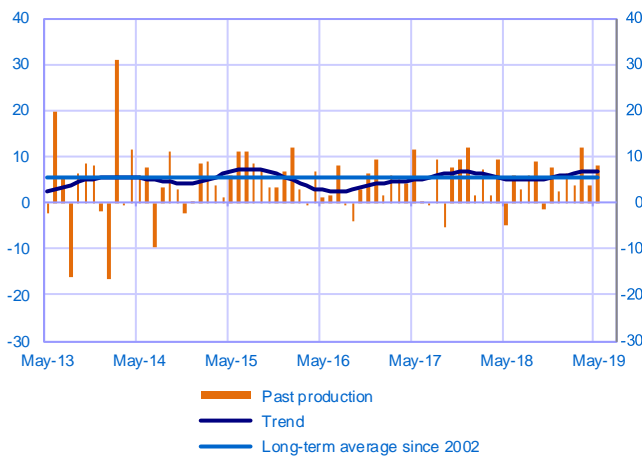
Balance of opinions, SA-WDA



**Other manufacturing industries (10% of value added)**  
(Including repair and installation of machinery)

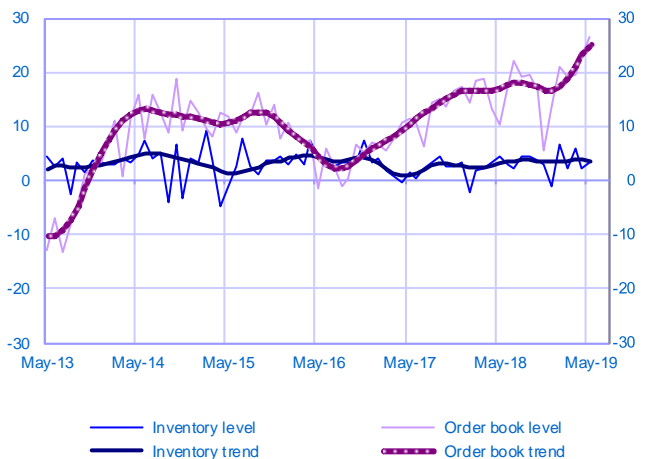
Changes in production

Balance of opinions, SA-WDA



Inventories and order book level

Balance of opinions, SA-WDA



May	Production	Deliveries	Orders	Inventories	Order books	Capacity Utilisation Rate	Production forecasts
<b>Other manufacturing</b>	<b>7</b>	<b>8</b>	<b>8</b>	<b>3</b>	<b>13</b>	<b>79</b>	<b>2</b>
Textiles, wearing apparel, leather and related products	7	9	9	3	6	77	3
Wood paper and printing	4	8	9	7	2	79	-2
Chemicals industry	20	20	8	-3	19	81	6
Pharmaceutical industry	7	9	12	2	3	82	4
Rubber, plastic products and other non-metallic mineral products	11	5	5	7	13	79	0
Metal and metal products manufacturing	0	3	1	3	7	76	3
Other manufacturing industries (including repair and installation of machinery)	8	10	11	3	27	82	4

The aggregated and by sub-sector series are seasonally adjusted separately: the seasonally adjusted series do not represent the sum of the seasonally adjusted components.

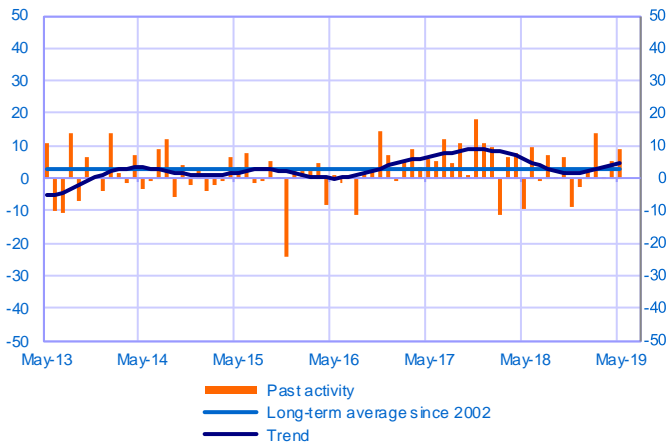
**SERVICES**

**Transport, automotive repair, accommodation and food services**  
(23% of value added in market services)

**Total**

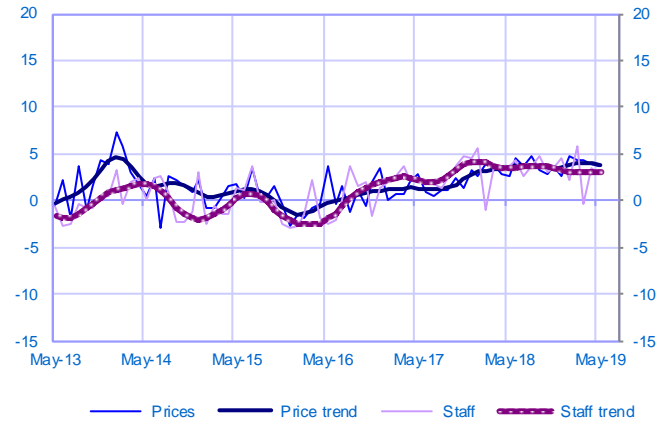
Changes in activity

Balance of opinions, SA-WDA



Changes in staff and prices

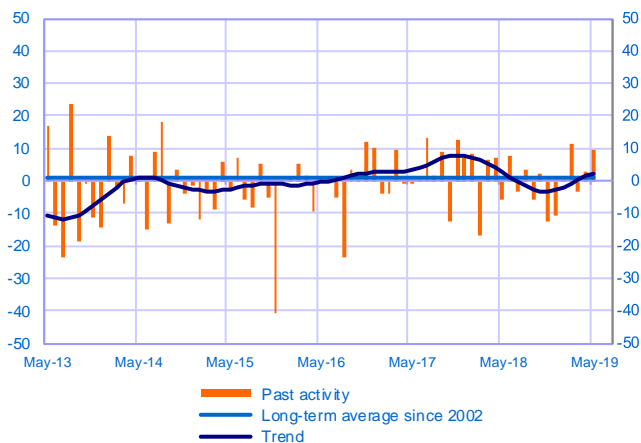
Balance of opinions, SA-WDA



**Accommodation and food services (13% of value added)**

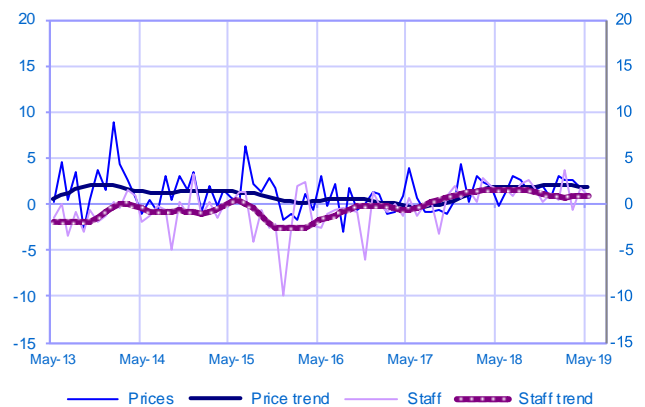
Changes in activity

Balance of opinions, SA-WDA



Changes in staff and prices

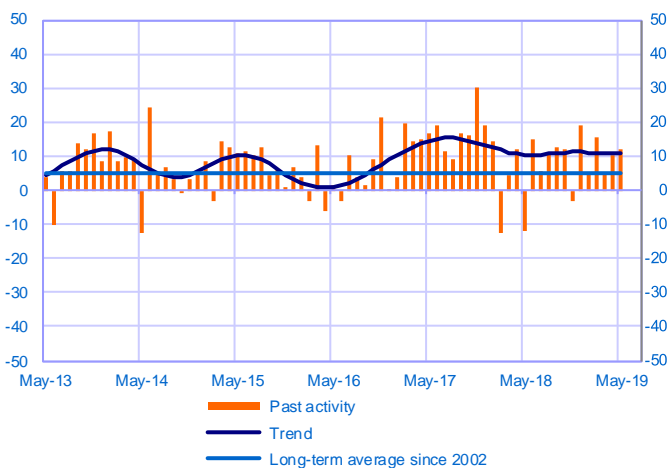
Balance of opinions, SA-WDA



**Transportation and storage (7% of value added)**

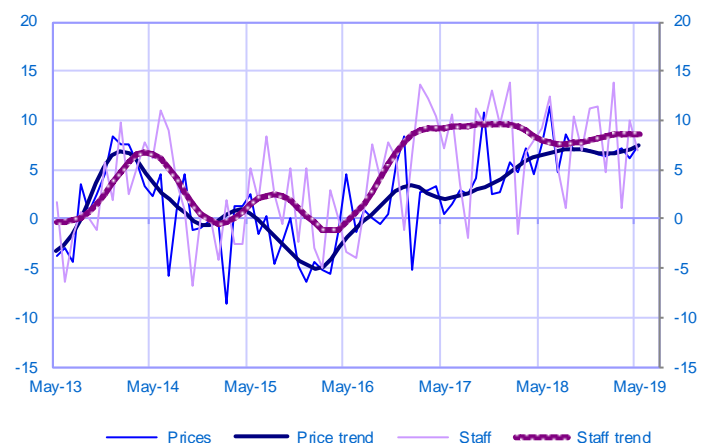
Changes in activity

Balance of opinions, SA-WDA



Changes in staff and prices

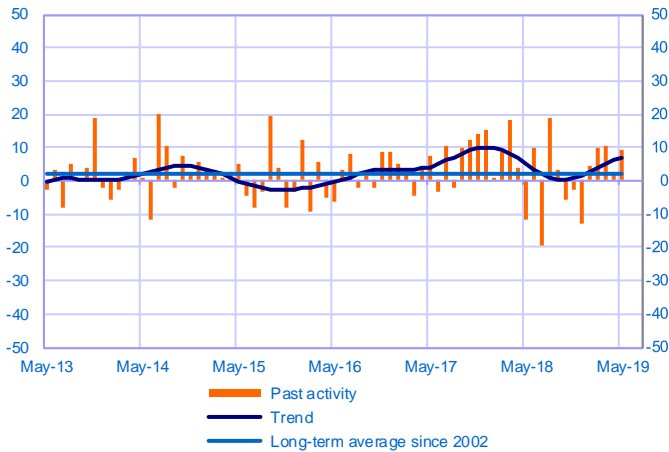
Balance of opinions, SA-WDA



**Automotive repair (3% of value added)**

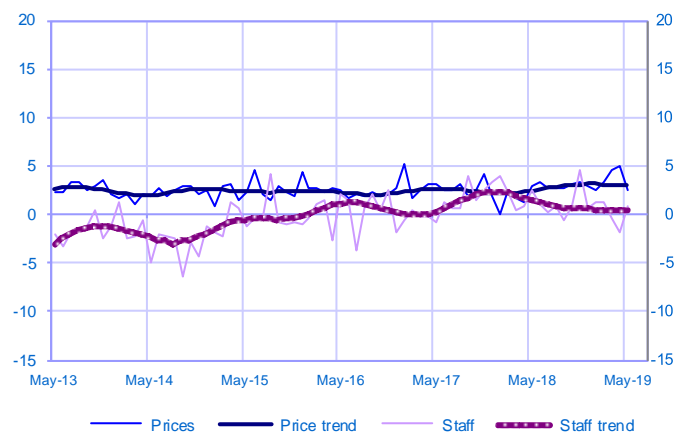
Changes in activity

Balance of opinions, SA-WDA



Changes in staff and prices

Balance of opinions, SA-WDA



May	Activity	Activity trend	Demand	Prices	Staff	Cash positions	Activity forecasts
<b>Transport, automotive repair, accommodation and food services</b>	<b>9</b>	<b>5</b>	<b>11</b>	<b>4</b>	<b>3</b>	<b>14</b>	<b>5</b>
Accommodation and food services activities	9	2	12	2	1	13	3
Transportation and storage	12	11	14	7	7	20	8
Automotive repair	9	7	11	2	1	5	-1

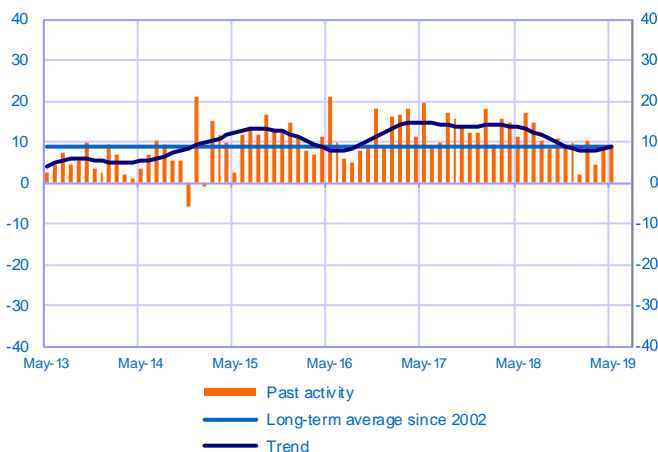
The aggregated and by sub-sector series are seasonally adjusted separately: the seasonally adjusted series do not represent the sum of the seasonally adjusted components.

**Professional, scientific and technical activities and administrative services (52% of value added in market services)**

**Total**

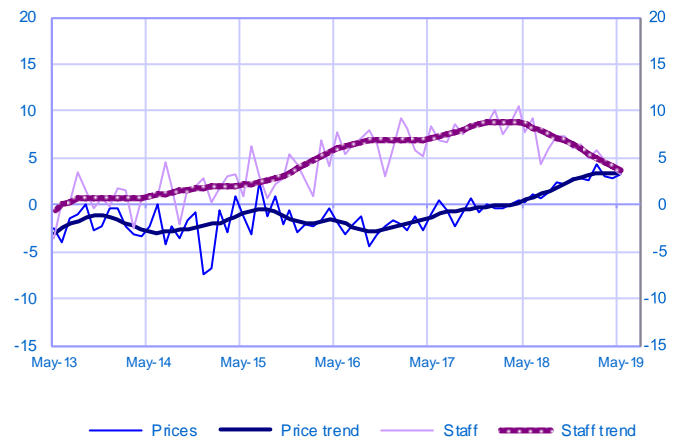
Changes in activity

Balance of opinions, SA-WDA



Changes in staff and prices

Balance of opinions, SA-WDA

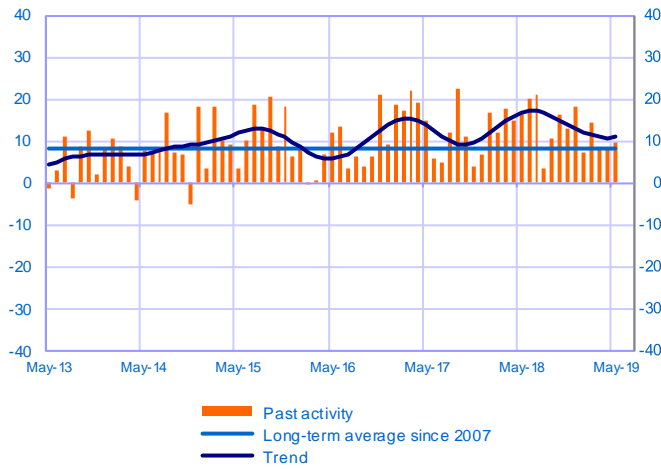




**Management consultancy and legal and accounting activities (21% of value added)**

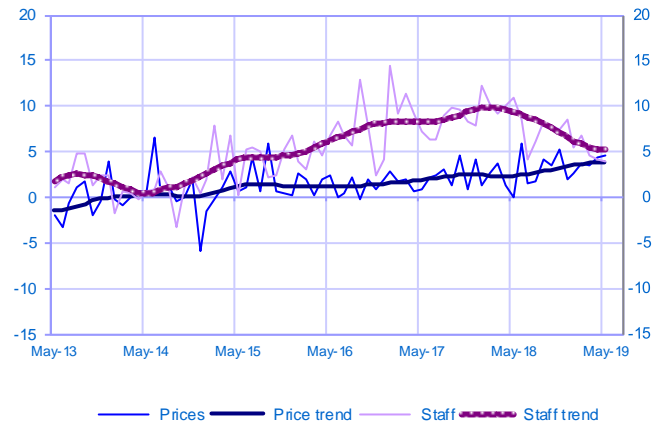
Changes in activity

*Balance of opinions, SA-WDA*



Changes in staff and prices

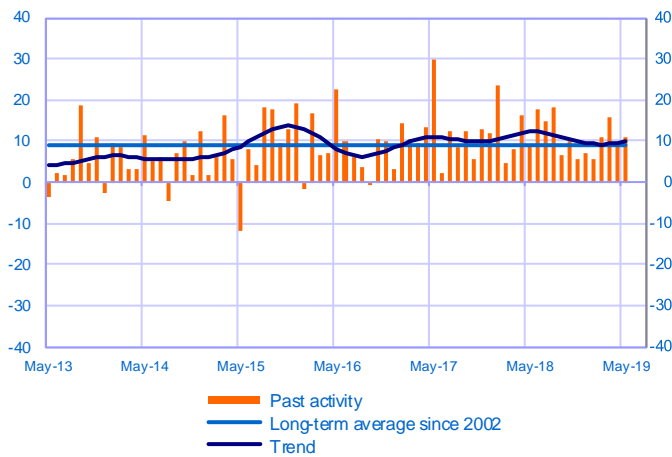
*Balance of opinions, SA-WDA*



**Architecture, engineering, technical testing and analysis activities (9% of value added)**

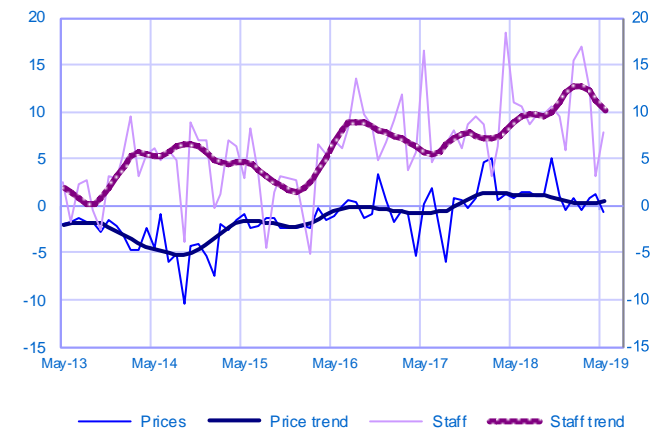
Changes in activity

*Balance of opinions, SA-WDA*



Changes in staff and prices

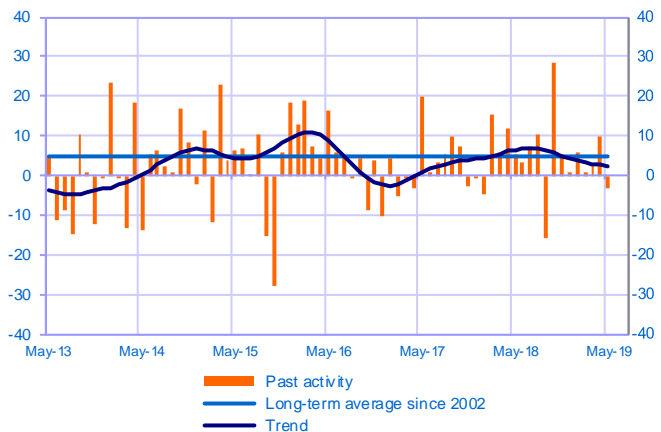
*Balance of opinions, SA-WDA*



**Advertising and market research (3% of value added)**

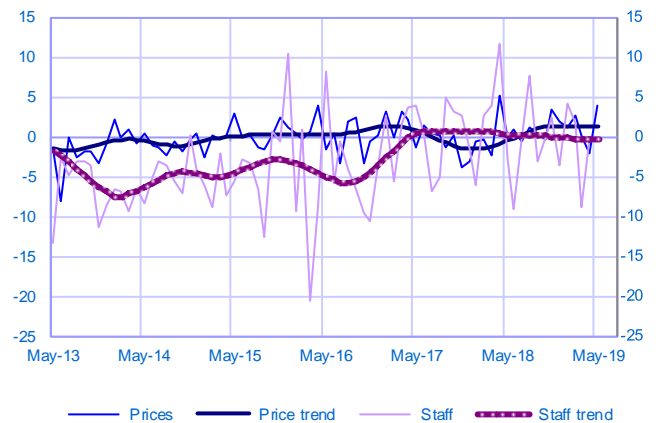
Changes in activity

*Balance of opinions, SA-WDA*



Changes in staff and prices

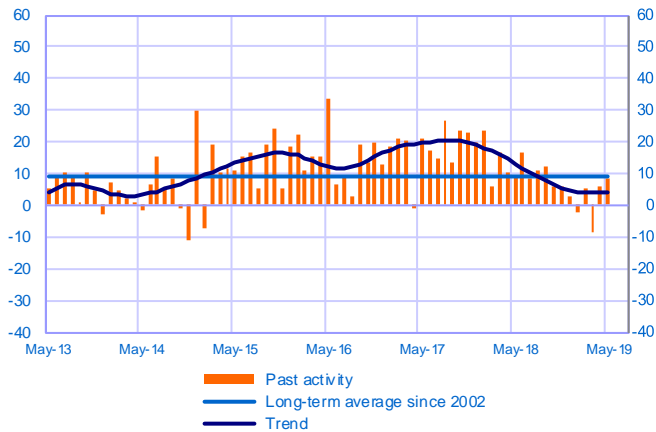
*Balance of opinions, SA-WDA*



**Administrative and support service activities (19% of value added)**

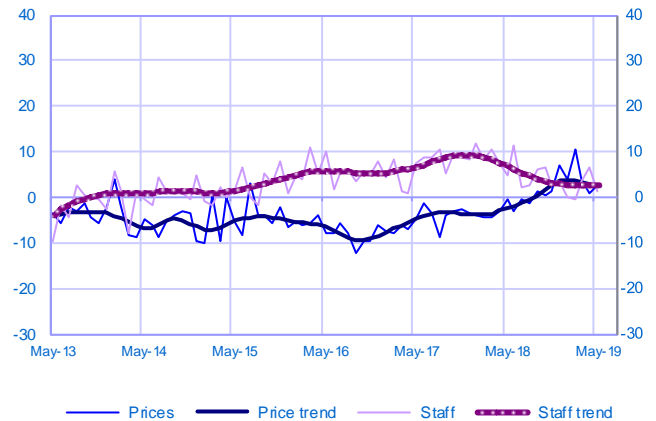
Changes in activity

Balance of opinions, SA-WDA



Changes in staff and prices

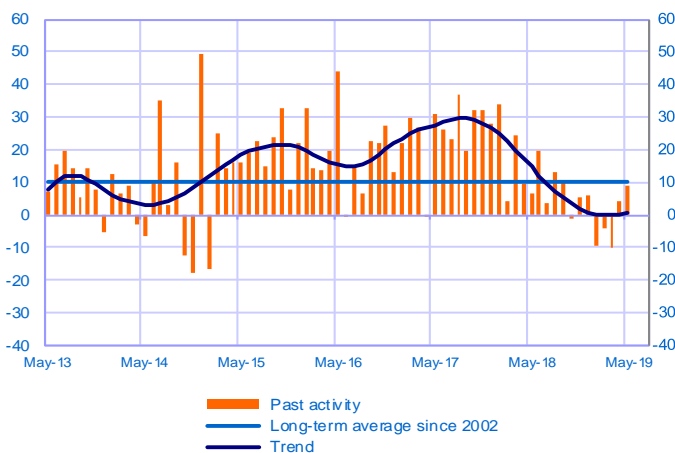
Balance of opinions, SA-WDA



**O/W Temporary employment agency activities (11% of value added)**

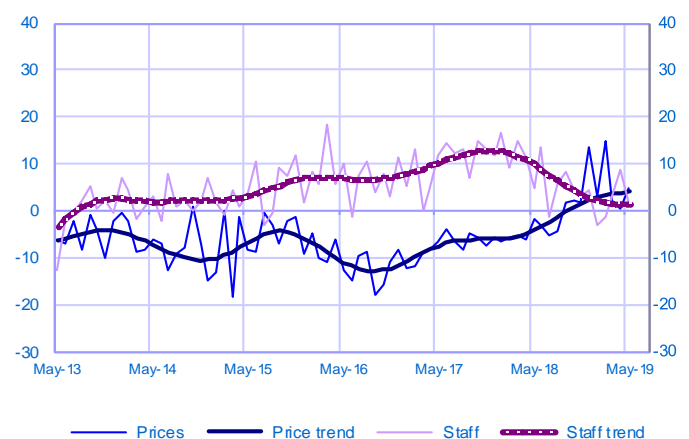
Changes in activity

Balance of opinions, SA-WDA



Changes in staff and prices

Balance of opinions, SA-WDA



May	Activity	Activity trend	Demand	Prices	Staff	Cash positions	Activity forecasts	
	<b>Professional scientific and technical activities and administrative services</b>	<b>9</b>	<b>9</b>	<b>8</b>	<b>3</b>	<b>3</b>	<b>16</b>	<b>9</b>
	Management consultancy and legal and accounting activities	10	11	9	5	4	23	10
	Architecture, engineering and technical testing	11	10	10	-1	8	1	10
	Advertising and market research	-3	2	2	4	0	5	5
	Administrative and support service activities	9	4	9	2	1	16	10
	<i>O/W Temporary employment agency activities</i>	9	0	9	5	2	22	14

The aggregated and by sub-sector series are seasonally adjusted separately: the seasonally adjusted series do not represent the sum of the seasonally adjusted components.

## Information and communication

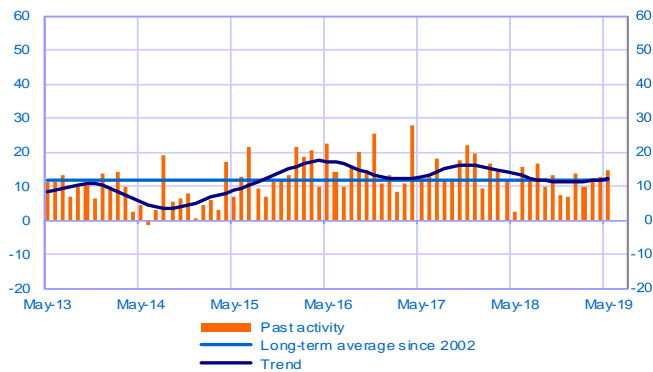
Period under review: May 2019

(19% of value added in market services)

### Total

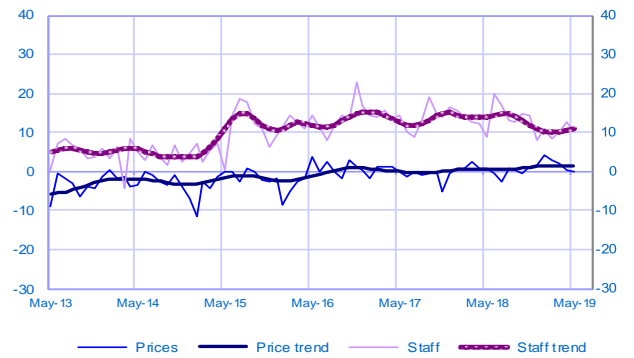
Changes in activity

Balance of opinions, SA-WDA



Changes in staff and prices

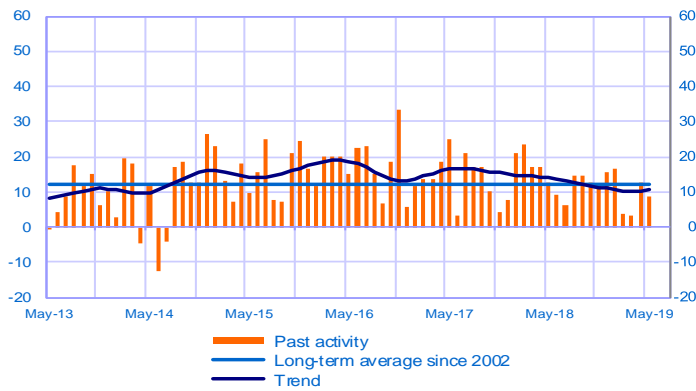
Balance of opinions, SA-WDA



### Publishing (4% of value added)

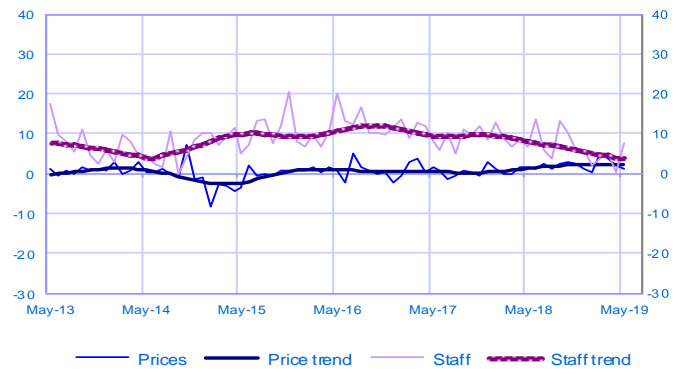
Changes in activity

Balance of opinions, SA-WDA



Changes in staff and prices

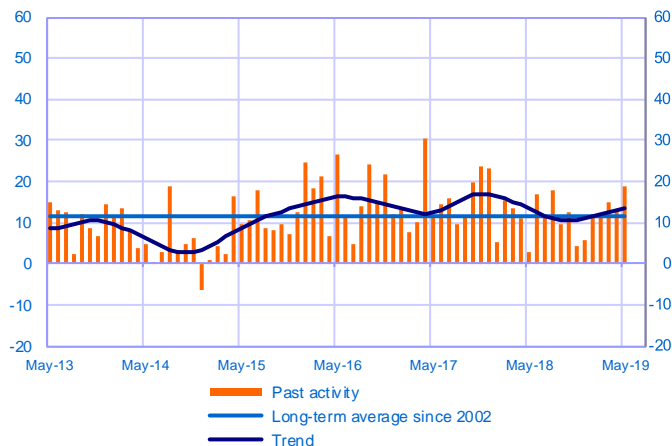
Balance of opinions, SA-WDA



### Computer and information services (15% of value added)

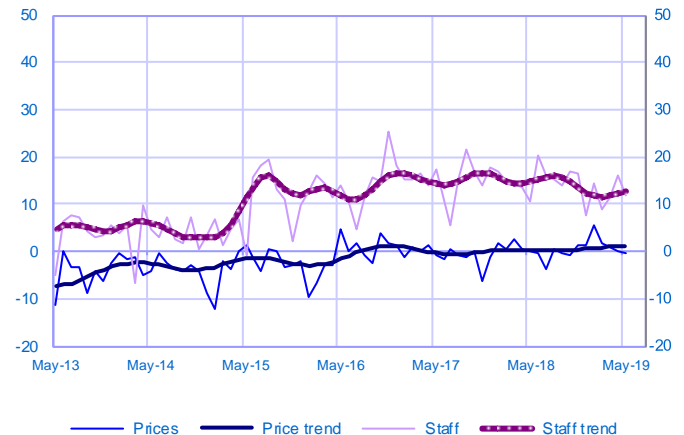
Changes in activity

Balance of opinions, SA-WDA



Changes in staff and prices

Balance of opinions, SA-WDA



May	Activity	Activity trend	Demand	Prices	Staff	Cash positions	Activity forecasts
Information and communication	15	12	14	0	10	29	9
Publishing	9	11	10	1	8	41	9
Computer and information services	19	14	16	0	12	26	11

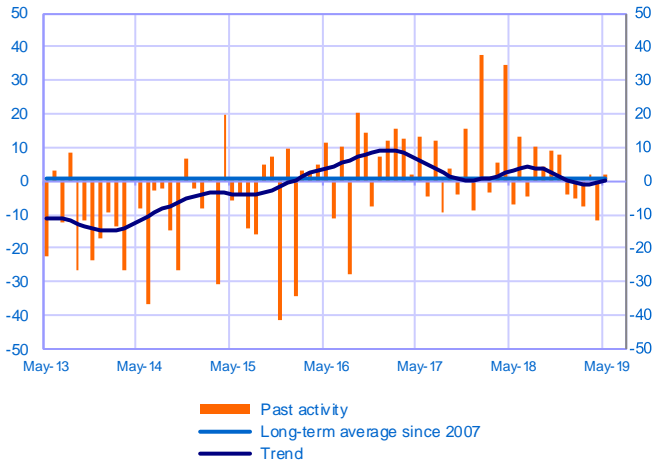
The aggregated and by sub-sector series are seasonally adjusted separately: the seasonally adjusted series do not represent the sum of the seasonally adjusted components.

# Recreation activities, personal services and activities of households as employers (6% of value added in market services)

## Total

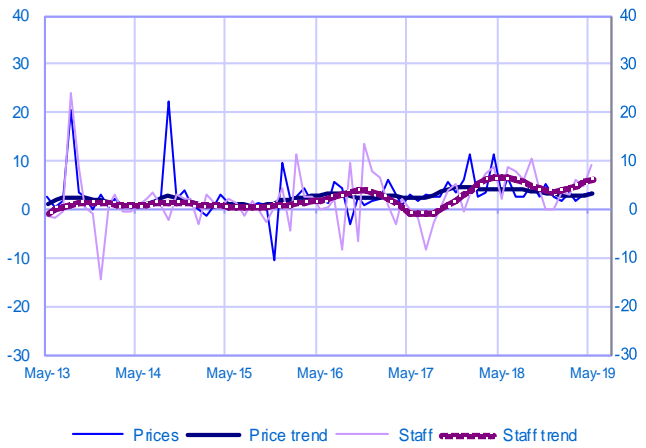
Changes in activity

Balance of opinions, SA-WDA



Changes in staff and prices

Balance of opinions, SA-WDA



May	Activity	Activity trend	Demand	Prices	Staff	Cash positions	Activity forecasts
Recreation activities, personal services and activities of households as employers	2	0	4	4	9	3	-4

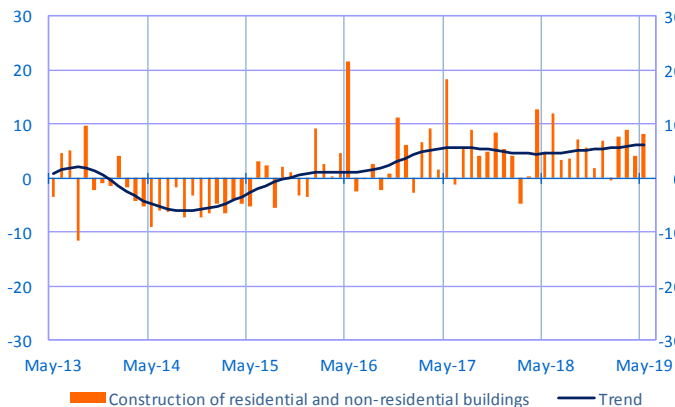
## CONSTRUCTION

### Construction of residential and non-residential buildings (29% of value added)

### Specialised construction activities (71% of value added)

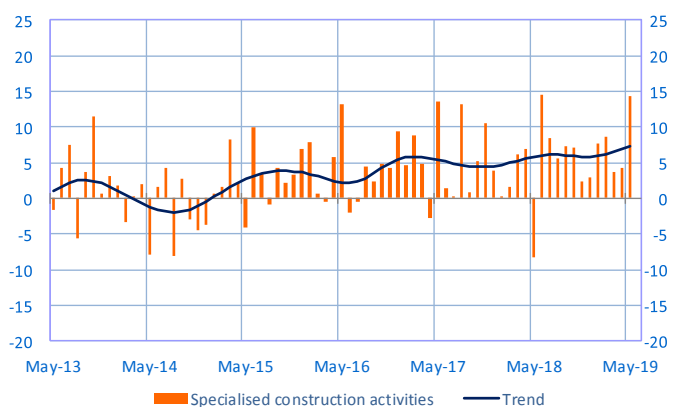
Changes in activity

Balance of opinions, SA-WDA



Changes in activity

Balance of opinions, SA-WDA



May	Activity	Order Books	Prices	Staff	Activity forecasts
Construction of residential and non-residential buildings	8	18	3	0	-3
Specialised construction activities	14	28	2	2	5

The aggregated and by sub-sector series are seasonally adjusted separately: the seasonally adjusted series do not represent the sum of the seasonally adjusted components.

