

**Business survey at the beginning of April 2026**  
**Industry, market services and construction**

13 April 2026

Data collected from 27 March 2026 to 3 April 2026

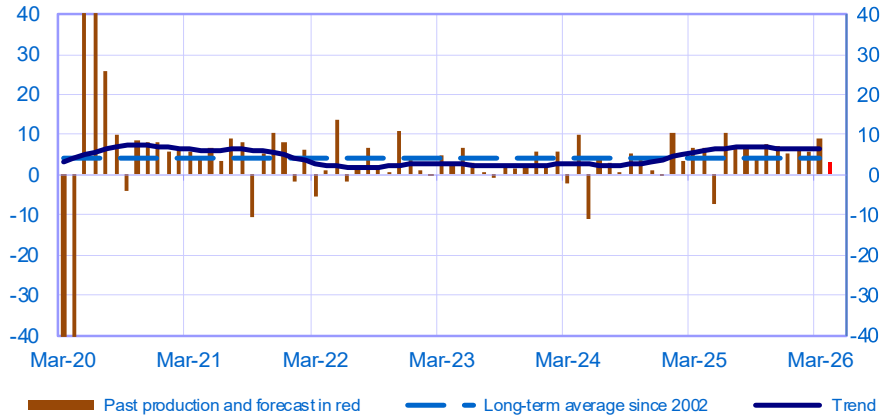
Contents

<b>INDUSTRY</b> .....	<b>2</b>
MANUFACTURE OF FOOD PRODUCTS AND BEVERAGES.....	3
ELECTRICAL, ELECTRONIC AND COMPUTER EQUIPMENT AND OTHER MACHINERY .....	3
TRANSPORT EQUIPMENT .....	5
OTHER MANUFACTURING.....	6
<b>MARKET SERVICES</b> .....	<b>9</b>
TRANSPORT, AUTOMOTIVE REPAIR, ACCOMMODATION AND FOOD SERVICES .....	10
PROFESSIONAL, SCIENTIFIC AND TECHNICAL ACTIVITIES AND ADMINISTRATIVE SERVICES ..	11
INFORMATION AND COMMUNICATION (19% OF VALUE ADDED IN MARKET SERVICES) .....	14
RECREATION ACTIVITIES, PERSONAL SERVICES AND ACTIVITIES OF HOUSEHOLDS AS EMPLOYERS.....	15
<b>CONSTRUCTION</b> .....	<b>16</b>
CONSTRUCTION OF BUILDINGS .....	17
SPECIALISED CONSTRUCTION ACTIVITIES .....	17

## Industry

### Opinion on the outlook for industrial production\*

Balance of opinions, SA-WDA

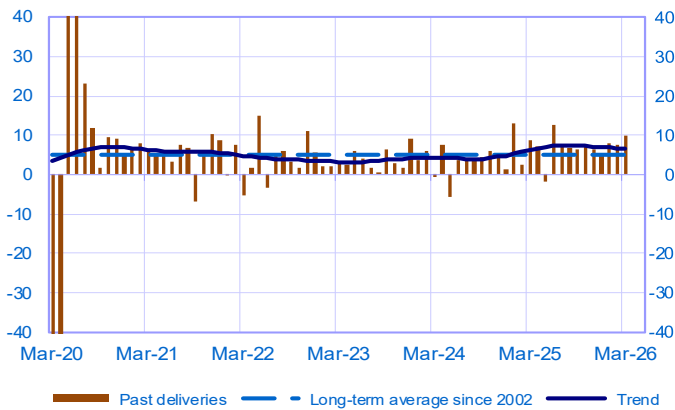


In this graph and the following, the extreme values related to the COVID-19 pandemic are available in WEBSTAT

	May-25	Jun-25	Jul-25	Aug-25	Sep-25	Oct-25	Nov-25	Dec-25	Jan-26	Feb-26	Mar-26	Apr-26
<b>Change</b>												<b>Forecast</b>
Production	-7	11	7	7	4	8	7	6	6	6	<b>9</b>	<b>3</b>
Deliveries	-2	13	7	7	7	7	7	5	8	8	<b>10</b>	
Total orders	3	9	4	8	6	7	8	7	8	6	<b>10</b>	
Staff	0	-1	1	1	0	-1	3	0	0	0	<b>3</b>	
Final goods prices	0	3	0	1	1	1	1	1	3	1	<b>5</b>	
Commodity prices	1	2	0	1	1	1	2	2	2	3	<b>18</b>	
<b>Level</b>												
Order books	-9	-8	-7	-7	-7	-6	-7	-5	-5	-4	<b>-2</b>	
Inventories of finished goods	5	6	6	7	6	7	7	7	7	7	<b>6</b>	
Capacity utilisation rate	75.2	75.4	75.5	75.8	76.1	76.2	76.6	76.4	76.6	76.6	<b>77.0</b>	
Cash positions	-2	-1	1	-1	-1	0	-1	-2	-1	-2	<b>-2</b>	

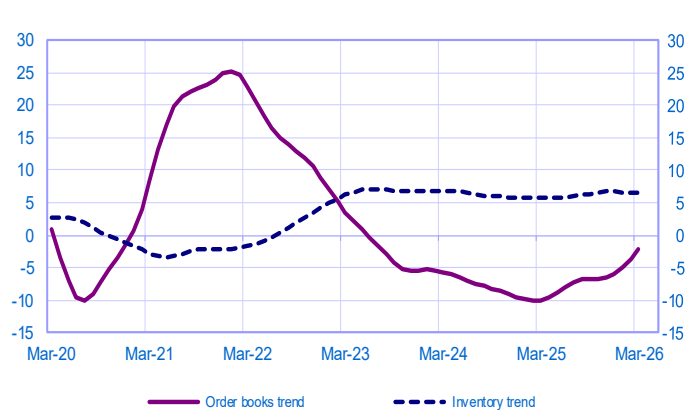
### Changes in deliveries

Balance of opinions, SA-WDA



### Inventories and order book level

Balance of opinions, SA-WDA



\* A positive (negative) balance of opinions corresponds to a rise (fall) in the evolution of activity. Balances of opinions may range from -200 to +200.

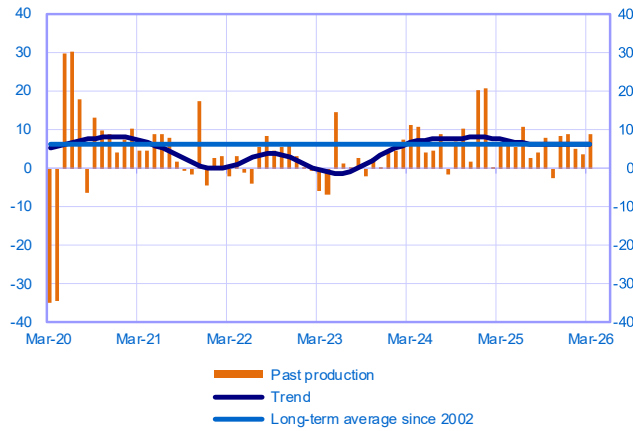
**Industry: sectoral level information**

Period under review: March 2026

**Manufacture of food products and beverages  
(15% of value added in manufacturing industry)**

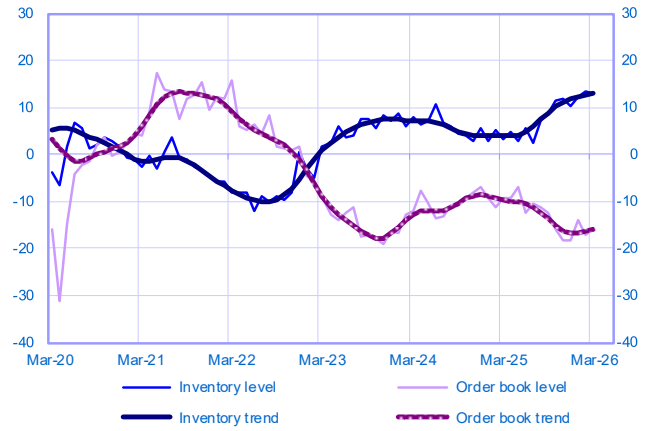
Changes in production

Balance of opinions, SA-WDA



Inventories and order book level

Balance of opinions, SA-WDA



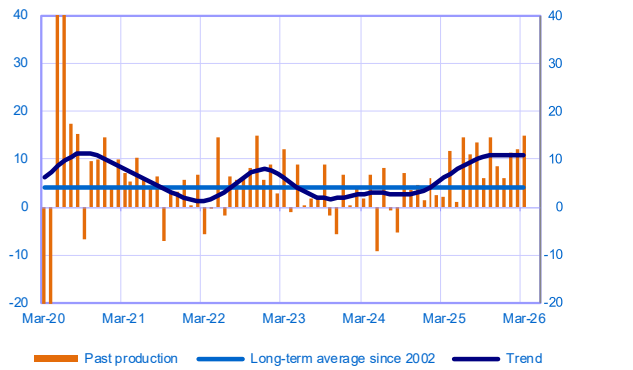
March	Production	Deliveries	Orders	Inventories	Order books	Capacity Utilisation Rate	Production forecasts
Manufacture of food products and beverages	9	4	4	13	-16	80	5

**Electrical, electronic and computer equipment and other machinery  
(17% of value added in manufacturing industry)**

**Total**

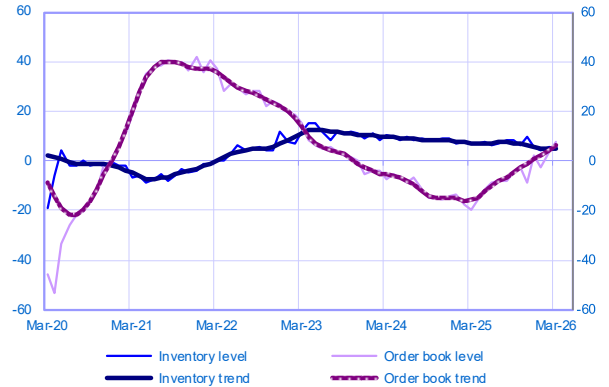
Changes in production

Balance of opinions, SA-WDA



Inventories and order book level

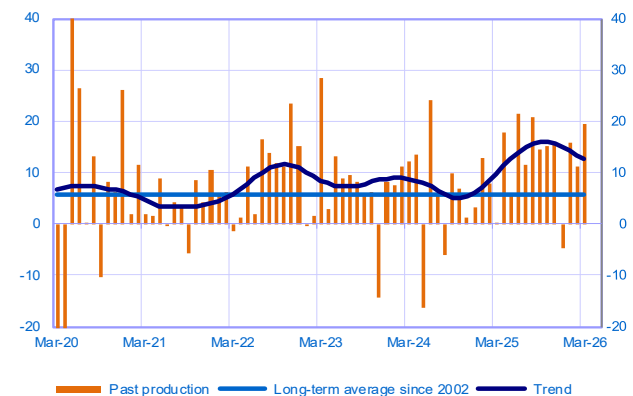
Balance of opinions, SA-WDA



**Computer, electronic and optical products (5% of value added)**

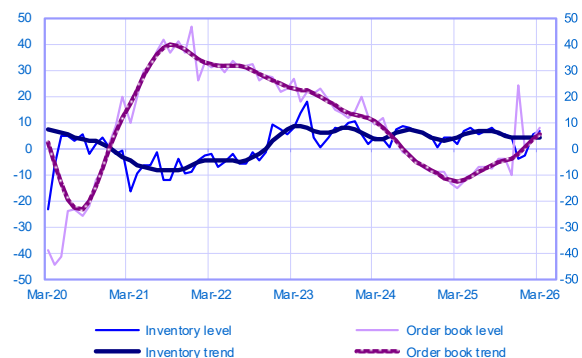
Changes in production

Balance of opinions, SA-WDA



Inventories and order book level

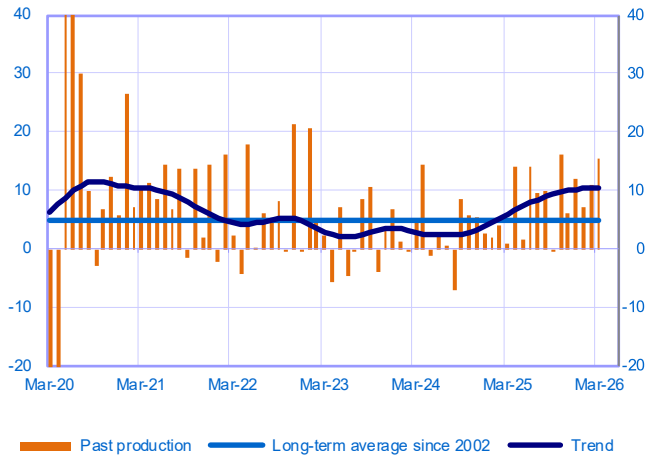
Balance of opinions, SA-WDA



**Electrical equipment (4% of value added)**

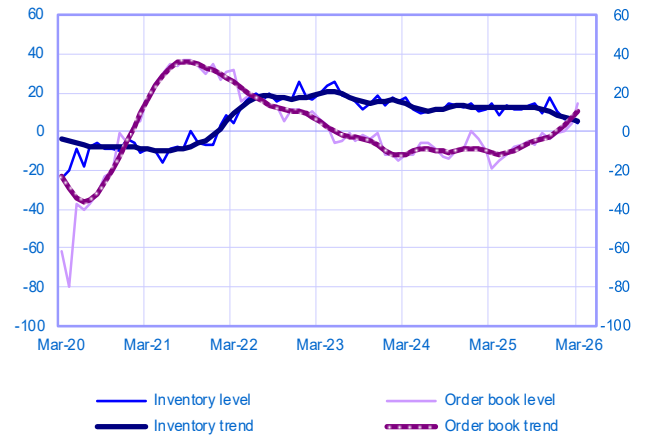
Changes in production

Balance of opinions, SA-WDA



Inventories and order book level

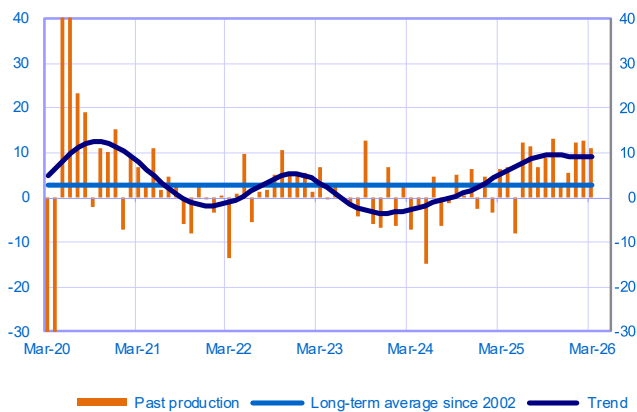
Balance of opinions, SA-WDA



**Machinery and equipment (8% of value added)**

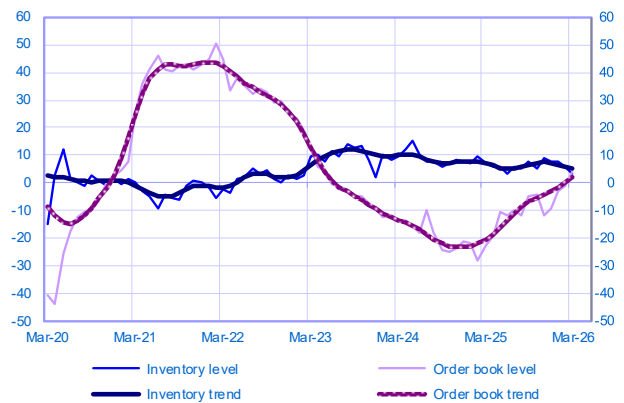
Changes in production

Balance of opinions, SA-WDA



Inventories and order book level

Balance of opinions, SA-WDA



March	Production	Deliveries	Orders	Inventories	Order books	Capacity Utilisation Rate	Production forecasts
<b>Electrical, electronic and computer equipment and other machinery</b>	<b>15</b>	<b>15</b>	<b>12</b>	<b>5</b>	<b>7</b>	<b>78</b>	<b>5</b>
Computer, electronic and optical products	19	14	16	7	8	81	5
Electrical equipment	15	15	19	5	15	79	8
Machinery and equipment	11	15	10	3	4	74	3

The aggregated and by sub-sector series are seasonally adjusted separately: the seasonally adjusted series do not represent the sum of the seasonally adjusted components.

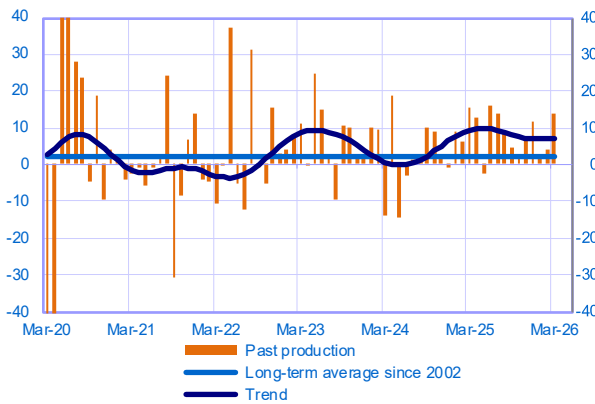
## Transport equipment

(14% of value added in manufacturing industry)

### Total

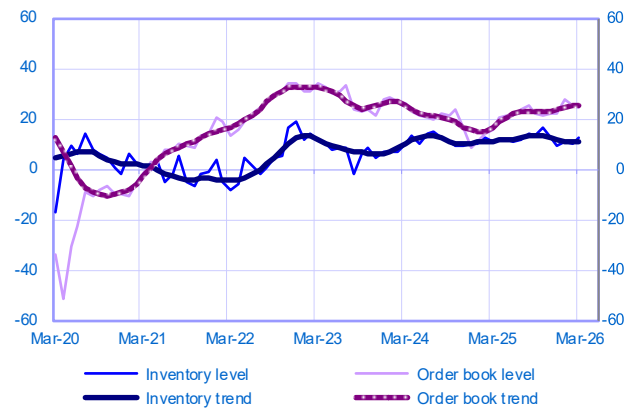
Changes in production

Balance of opinions, SA-WDA



Inventories and order book level

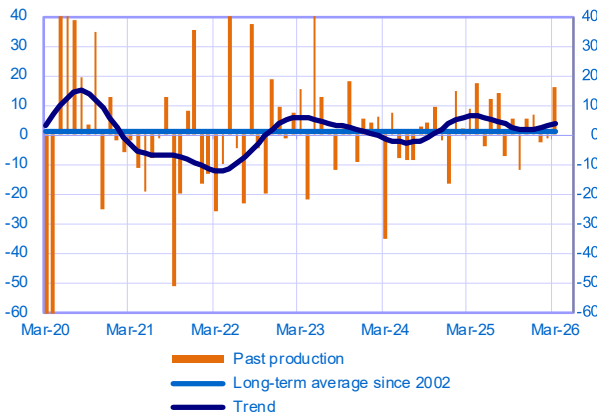
Balance of opinions, SA-WDA



## Automotive industry (7% of value added)

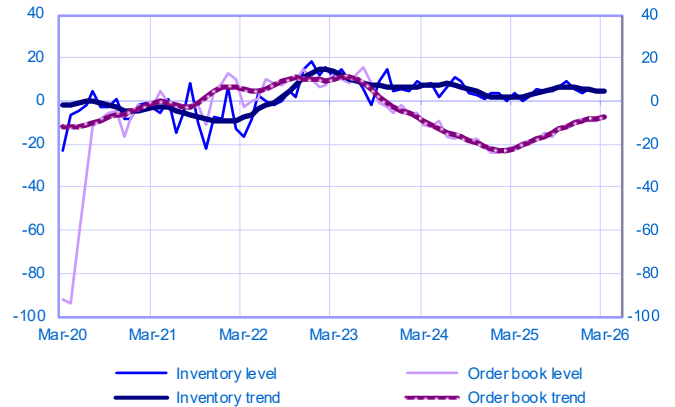
Changes in production

Balance of opinions, SA-WDA



Inventories and order book level

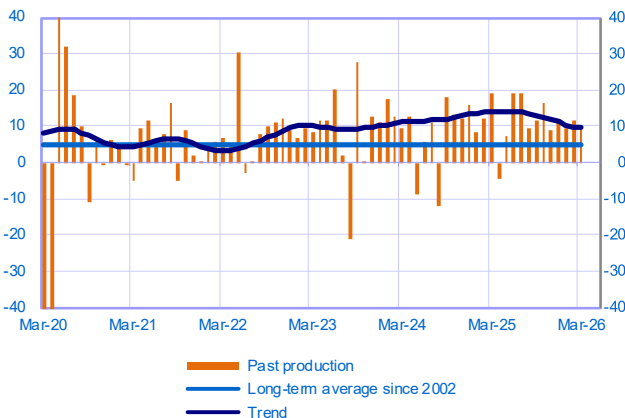
Balance of opinions, SA-WDA



## Other transport equipment (7% of value added)

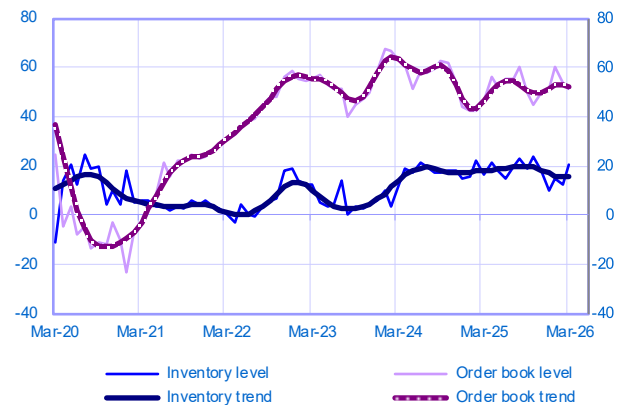
Changes in production

Balance of opinions, SA-WDA



Inventories and order book level

Balance of opinions, SA-WDA



March	Production	Deliveries	Orders	Inventories	Order books	Capacity Utilisation Rate	Production forecasts
Transport equipment	14	10	20	13	24	80	0
Automotive industry	16	15	15	4	-7	76	-5
Other transport equipment	10	16	22	20	51	84	5

The aggregated and by sub-sector series are seasonally adjusted separately; the seasonally adjusted series do not represent the sum of the seasonally adjusted components.

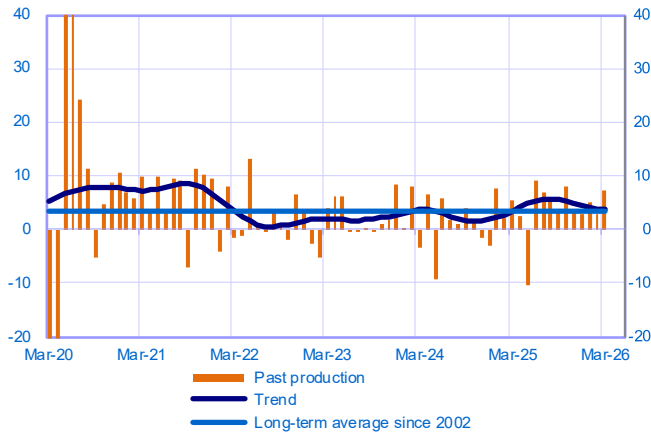
## Other manufacturing

(54% of value added in manufacturing industry)

### Total

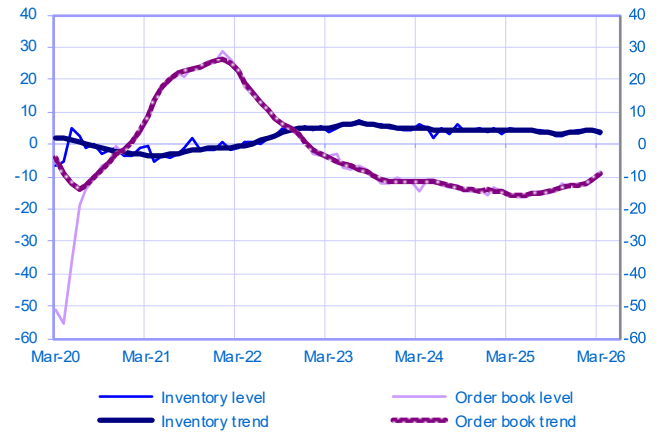
#### Changes in production

Balance of opinions, SA-WDA



#### Inventories and order book level

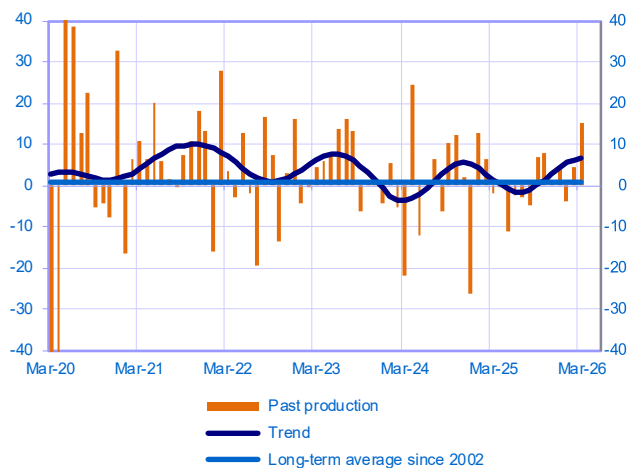
Balance of opinions, SA-WDA



## Textiles, wearing apparel, leather and related products (3% of value added)

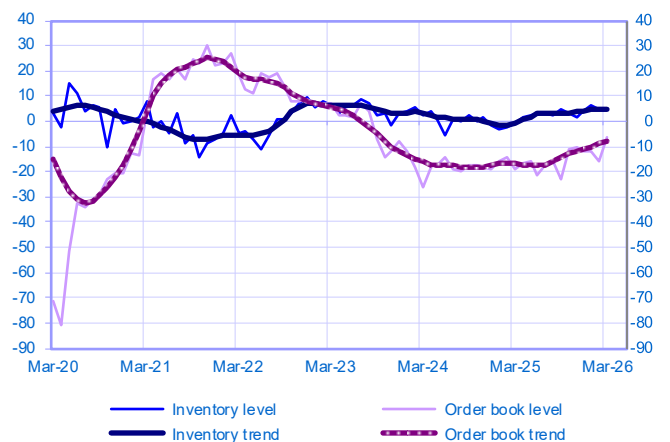
#### Changes in production

Balance of opinions, SA-WDA



#### Inventories and order book level

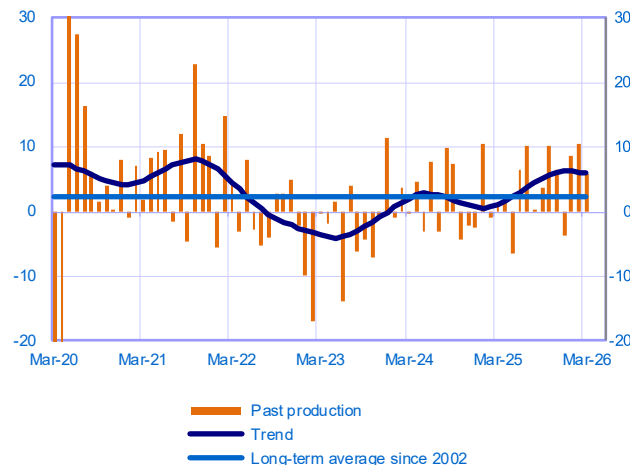
Balance of opinions, SA-WDA



## Wood, paper and printing (6% of value added)

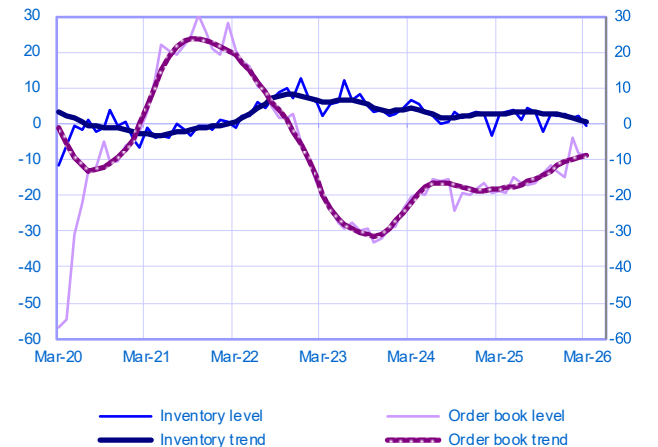
#### Changes in production

Balance of opinions, SA-WDA



#### Inventories and order book level

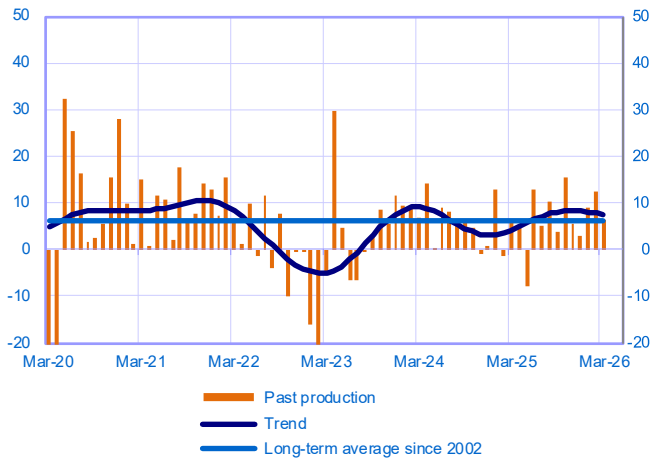
Balance of opinions, SA-WDA



**Chemicals industry (8% of value added)**

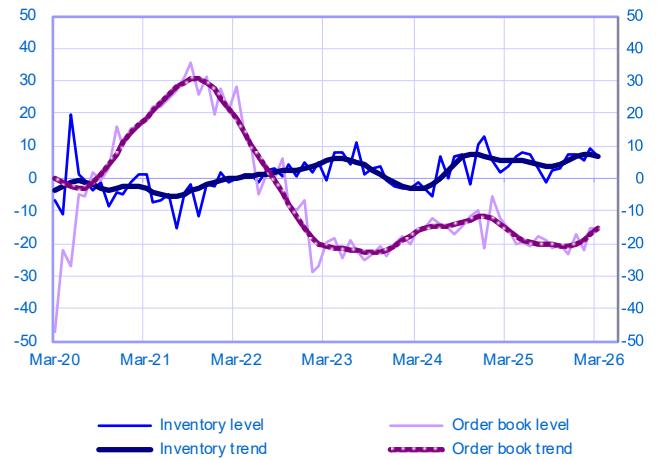
Changes in production

Balance of opinions, SA-WDA



Inventories and order book level

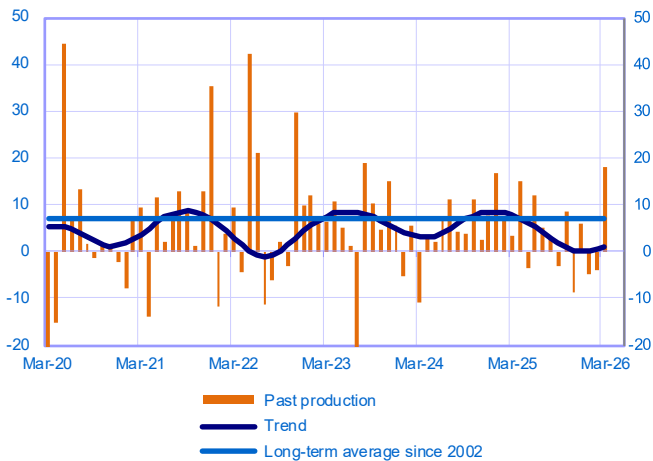
Balance of opinions, SA-WDA



**Pharmaceutical industry (5% of value added)**

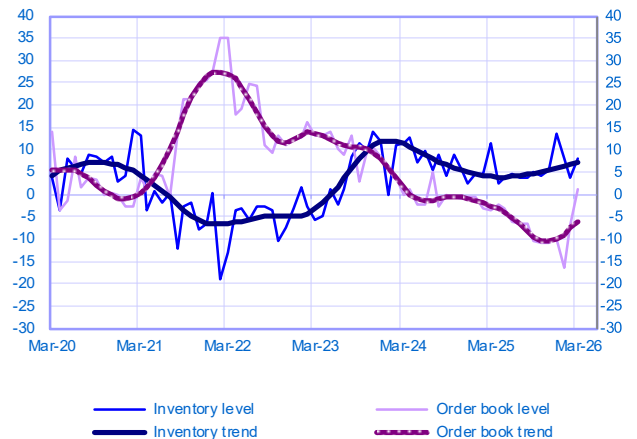
Changes in production

Balance of opinions, SA-WDA



Inventories and order book level

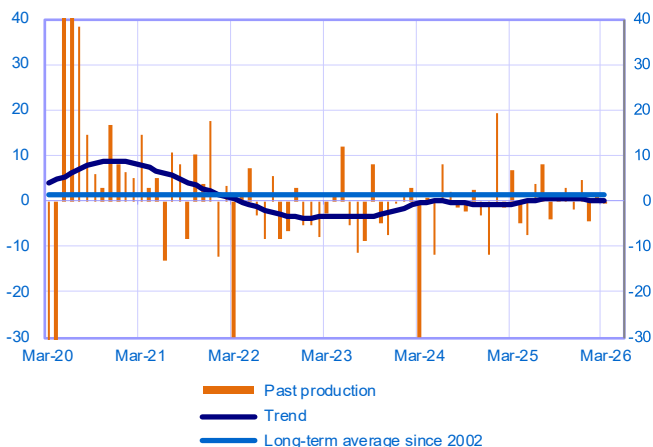
Balance of opinions, SA-WDA



**Rubber, plastic products and other non-metallic mineral products (10% of value added)**

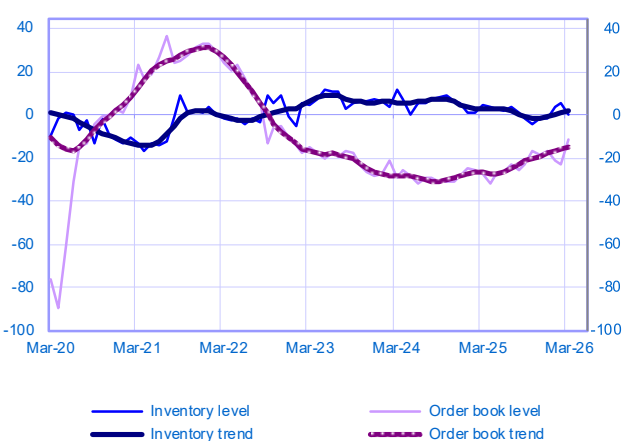
Changes in production

Balance of opinions, SA-WDA



Inventories and order book level

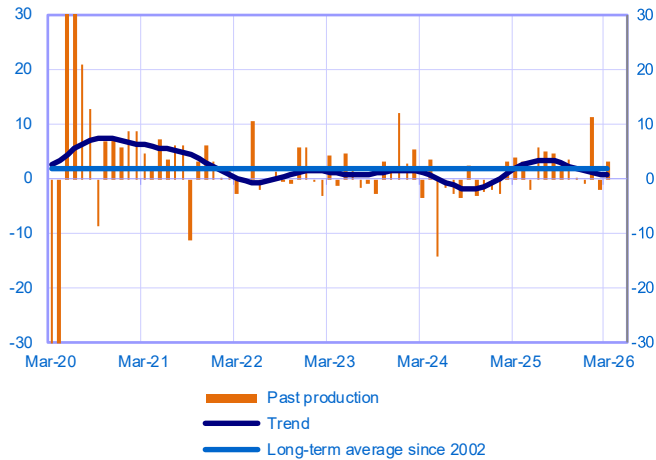
Balance of opinions, SA-WDA



**Metal and metal products manufacturing (12% of value added)**

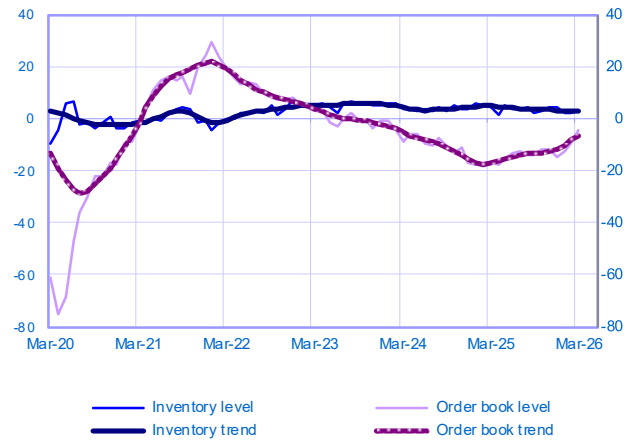
Changes in production

Balance of opinions, SA-WDA



Inventories and order book level

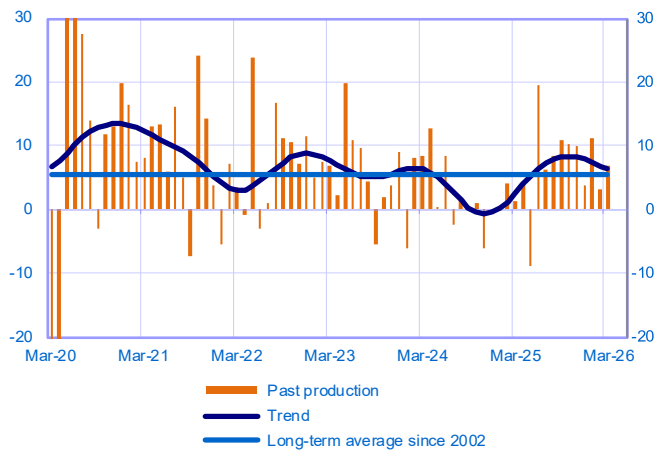
Balance of opinions, SA-WDA



**Other manufacturing industries (10% of value added)**  
(Including repair and installation of machinery)

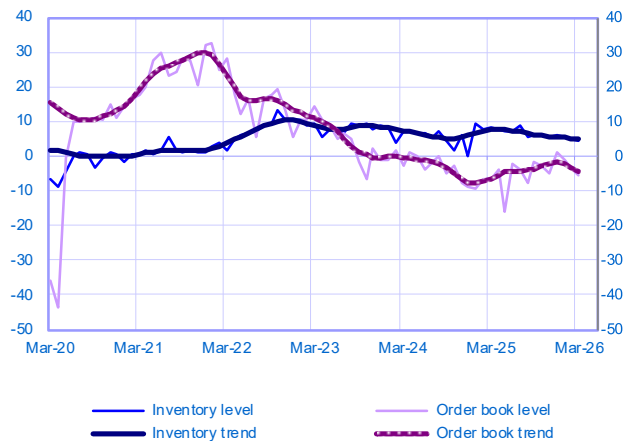
Changes in production

Balance of opinions, SA-WDA



Inventories and order book level

Balance of opinions, SA-WDA



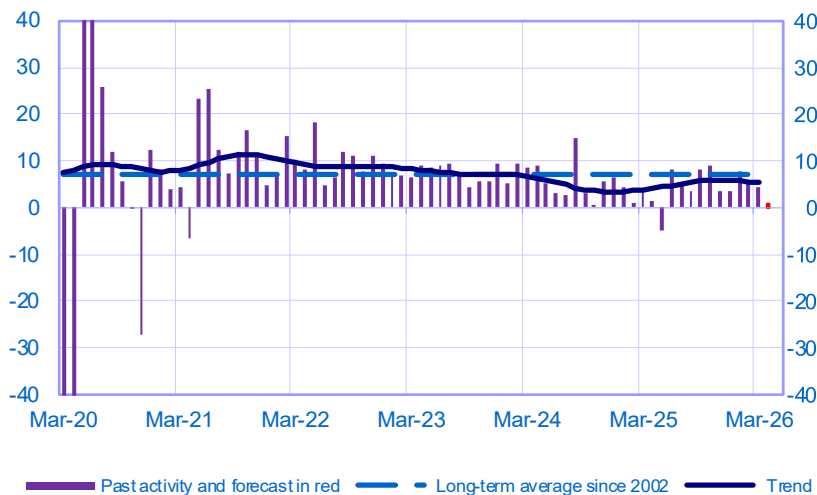
March	Production	Deliveries	Orders	Inventories	Order books	Capacity Utilisation Rate	Production forecasts
<b>Other manufacturing</b>	<b>7</b>	<b>9</b>	<b>11</b>	<b>3</b>	<b>-8</b>	<b>75</b>	<b>3</b>
Textiles, wearing apparel, leather and related products	15	18	17	5	-6	78	2
Wood paper and printing	6	9	8	-1	-9	77	2
Chemicals industry	7	6	12	7	-15	75	5
Pharmaceutical industry	18	35	18	8	1	80	4
Rubber, plastic products and other non-metallic mineral products	0	6	11	0	-12	71	2
Metal and metal products manufacturing	3	10	9	3	-4	71	3
Other manufacturing industries (including repair and installation of machinery)	7	5	6	4	-6	80	5

The aggregated and by sub-sector series are seasonally adjusted separately: the seasonally adjusted series do not represent the sum of the seasonally adjusted components.

## Market Services

### Opinion on the outlook for services activity\*

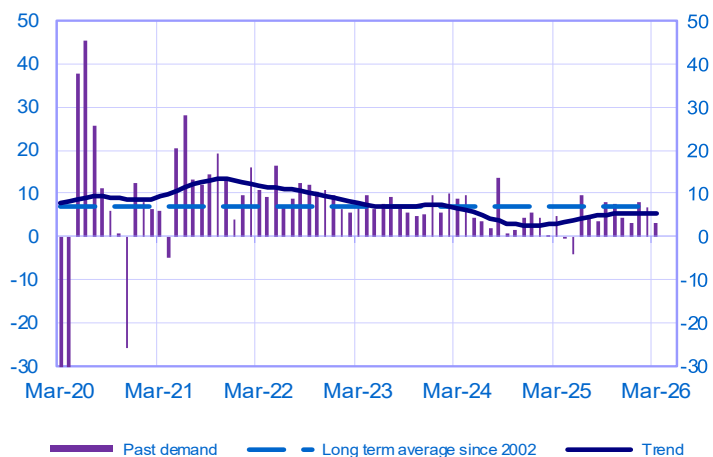
Balance of opinions, SA-WDA



	May-25	Jun-25	Jul-25	Aug-25	Sep-25	Oct-25	Nov-25	Dec-25	Jan-26	Feb-26	Mar-26	Apr-26
<b>Change</b>												<b>Forecast</b>
Activity	-5	8	5	4	8	9	4	4	8	6	4	1
Aggregate demand	-4	9	5	4	8	7	4	3	8	7	3	
Prices	1	1	1	1	2	2	3	1	2	2	2	
Staff	-2	2	1	1	0	2	0	0	0	1	2	
<b>Level</b>												
Cash positions	0	1	1	0	1	2	1	0	1	0	-1	

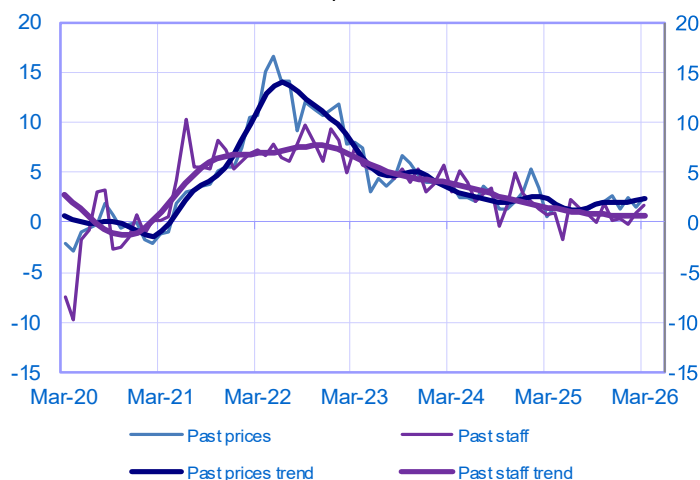
### Changes in demand

Balance of opinions, SA-WDA



### Changes in prices and staff

Balance of opinions, SA-WDA



\* A positive (negative) balance of opinions corresponds to a rise (fall) in the evolution of activity. Balances of opinions may range from -200 to +200.

Market services: sectoral level information

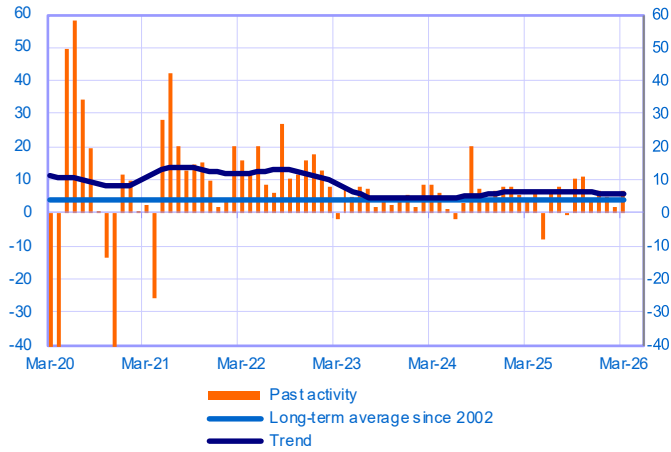
Period under review: March 2026

Transport, automotive repair, accommodation and food services  
(23% of value added in market services)

Total

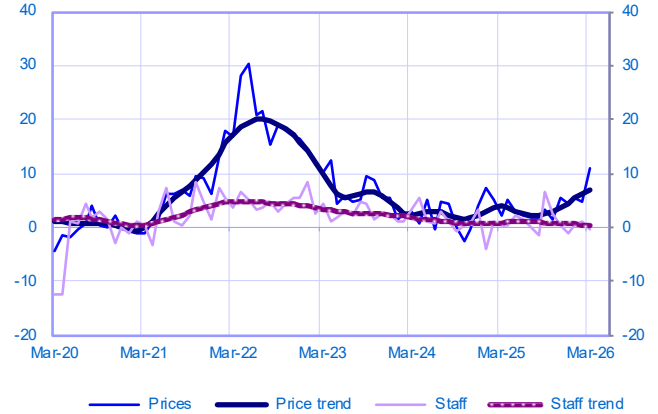
Changes in activity

Balance of opinions, SA-WDA



Changes in staff and prices

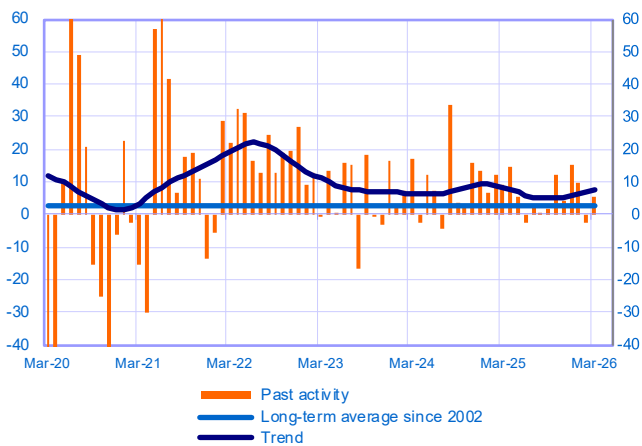
Balance of opinions, SA-WDA



Accommodation and food services (13% of value added)

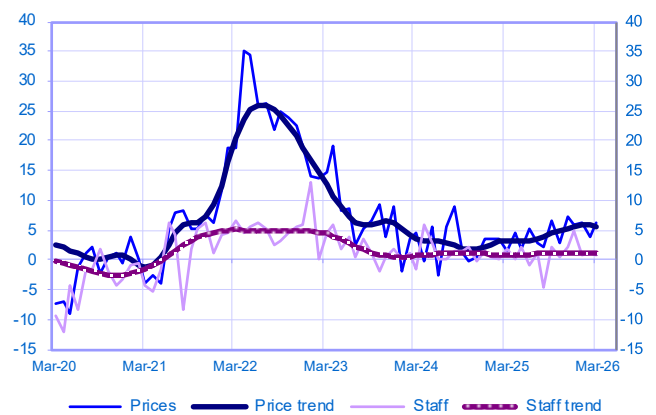
Changes in activity

Balance of opinions, SA-WDA



Changes in staff and prices

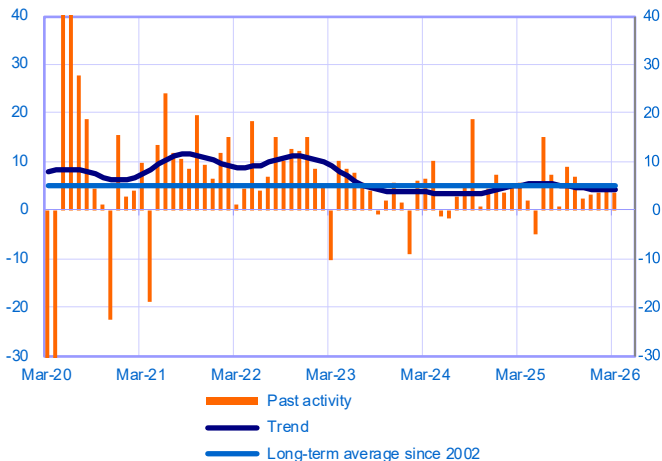
Balance of opinions, SA-WDA



Transportation and storage (7% of value added)

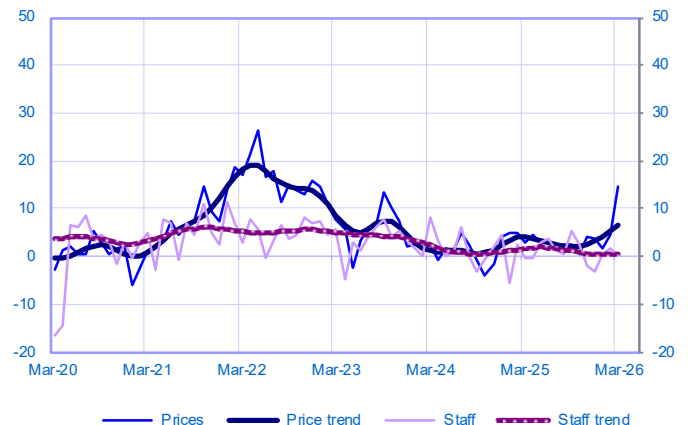
Changes in activity

Balance of opinions, SA-WDA



Changes in staff and prices

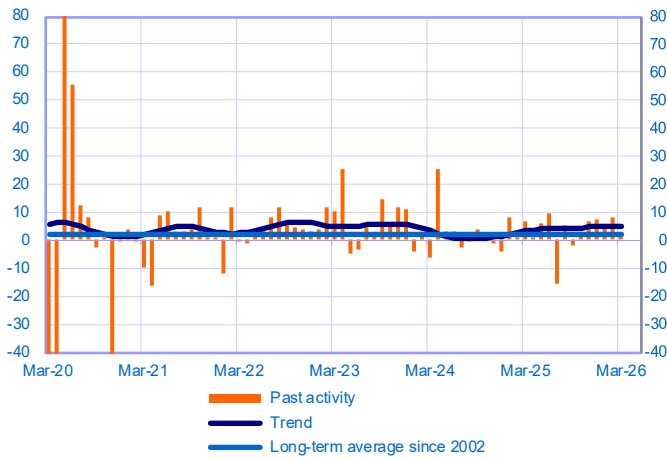
Balance of opinions, SA-WDA



**Automotive repair (3% of value added)**

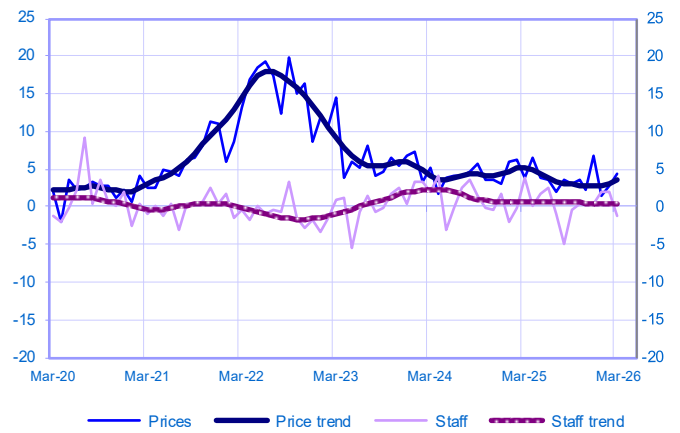
Changes in activity

Balance of opinions, SA-WDA



Changes in staff and prices

Balance of opinions, SA-WDA



March	Activity	Activity trend	Demand	Prices	Staff	Cash positions	Activity forecasts
<b>Transport, automotive repair, accommodation and food services</b>	<b>6</b>	<b>6</b>	<b>6</b>	<b>11</b>	<b>0</b>	<b>-8</b>	<b>1</b>
Accommodation and food services activities	5	7	6	6	1	-8	-2
Transportation and storage	4	4	4	14	0	-7	4
Automotive repair	2	5	3	4	-1	-5	1

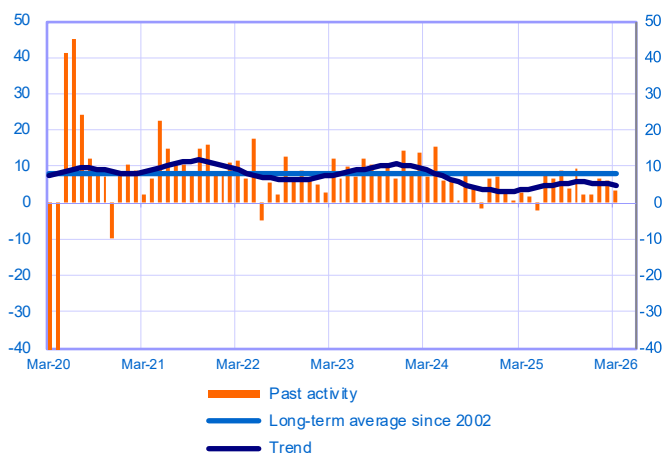
The aggregated and by sub-sector series are seasonally adjusted separately: the seasonally adjusted series do not represent the sum of the seasonally adjusted components.

**Professional, scientific and technical activities and administrative services (52% of value added in market services)**

**Total**

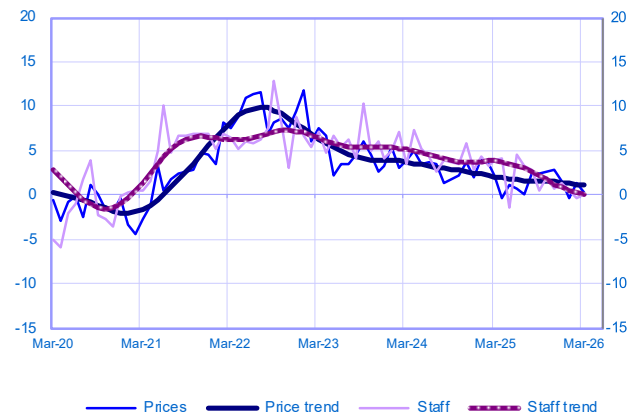
Changes in activity

Balance of opinions, SA-WDA



Changes in staff and prices

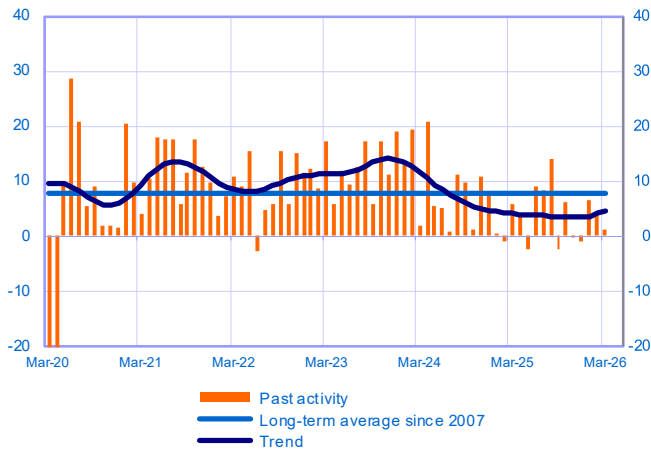
Balance of opinions, SA-WDA



### Management consultancy and legal and accounting activities (21% of value added)

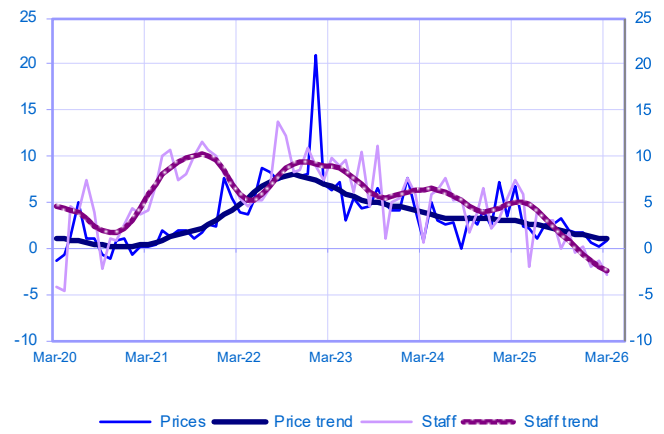
Changes in activity

*Balance of opinions, SA-WDA*



Changes in staff and prices

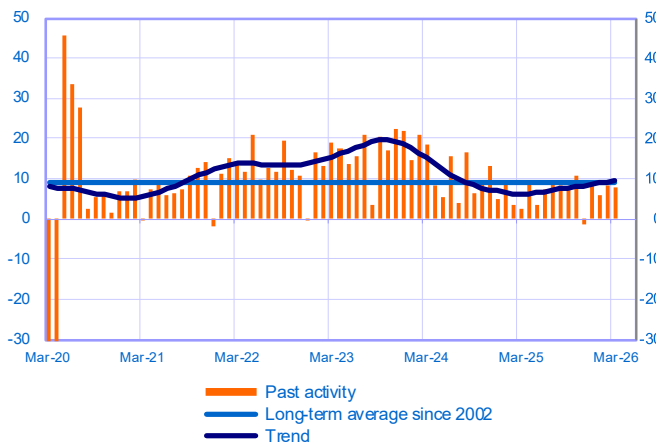
*Balance of opinions, SA-WDA*



### Architecture, engineering, technical testing and analysis activities (9% of value added)

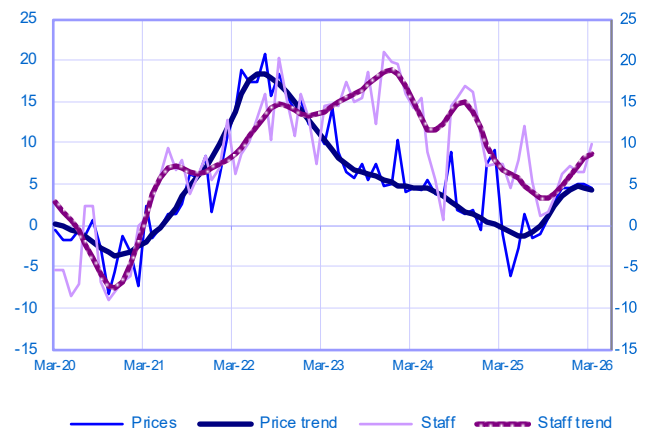
Changes in activity

*Balance of opinions, SA-WDA*



Changes in staff and prices

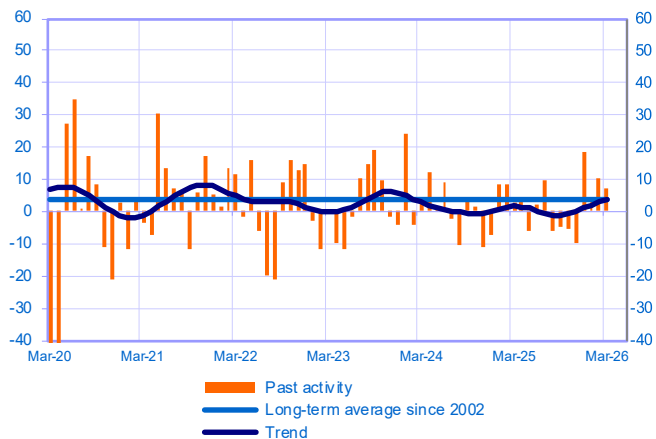
*Balance of opinions, SA-WDA*



### Advertising and market research (3% of value added)

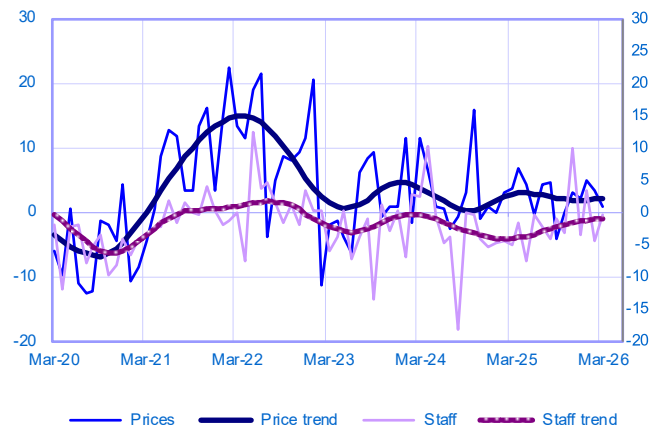
Changes in activity

*Balance of opinions, SA-WDA*



Changes in staff and prices

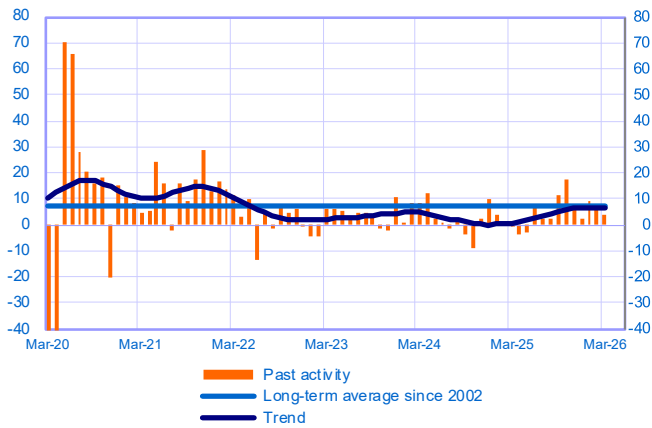
*Balance of opinions, SA-WDA*



**Administrative and support service activities (19% of value added)**

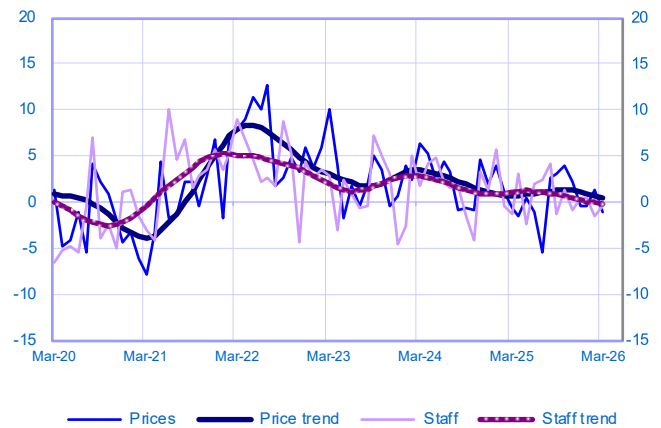
Changes in activity

Balance of opinions, SA-WDA



Changes in staff and prices

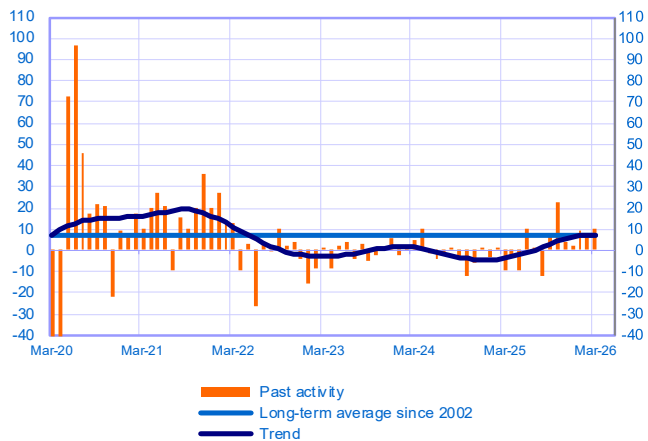
Balance of opinions, SA-WDA



**O/W temporary employment agency activities (11% of value added)**

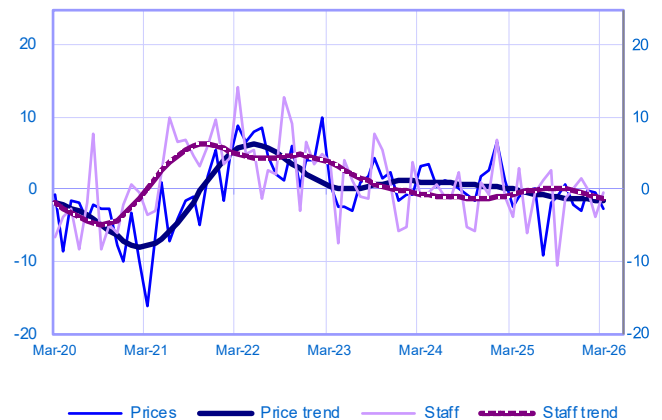
Changes in activity

Balance of opinions, SA-WDA



Changes in staff and prices

Balance of opinions, SA-WDA



March	Activity	Activity trend	Demand	Prices	Staff	Cash positions	Activity forecasts
	<b>Professional scientific and technical activities and administrative services</b>	<b>3</b>	<b>5</b>	<b>1</b>	<b>0</b>	<b>1</b>	<b>4</b>
	Management consultancy and legal and accounting activities	1	5	-1	1	-3	0
	Architecture, engineering and technical testing	8	10	0	5	10	7
	Advertising and market research	7	4	7	1	-1	-13
	Administrative and support service activities	4	6	2	-1	0	1
	<i>O/W temporary employment agency activities</i>	10	7	4	-3	0	-1

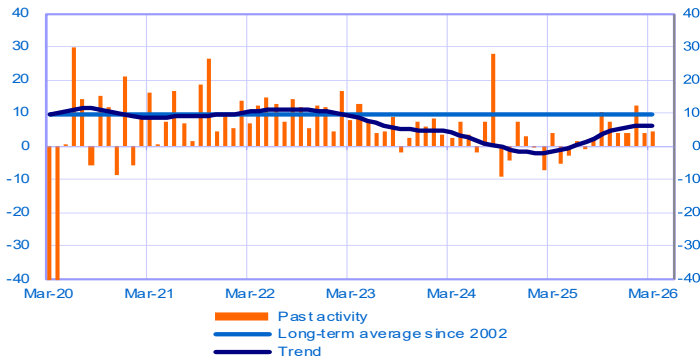
The aggregated and by sub-sector series are seasonally adjusted separately: the seasonally adjusted series do not represent the sum of the seasonally adjusted components.

**Information and communication (19% of value added in market services)**

**Total**

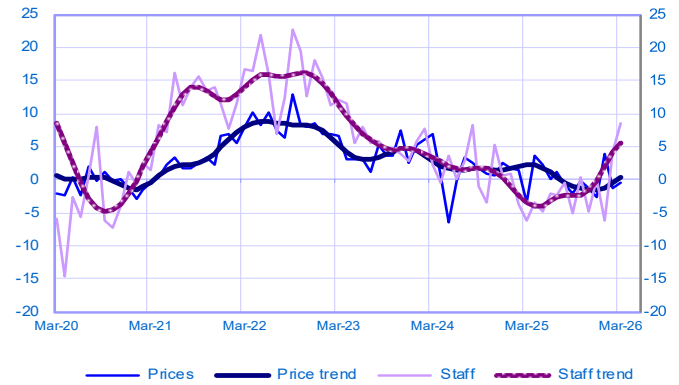
Changes in activity

Balance of opinions, SA-WDA



Changes in staff and prices

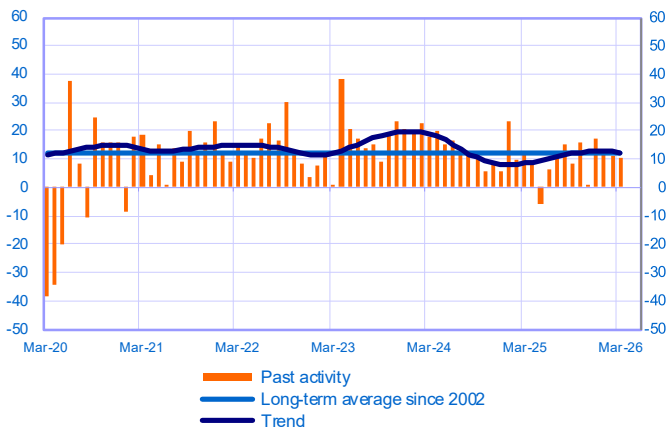
Balance of opinions, SA-WDA



**Publishing (4% of value added)**

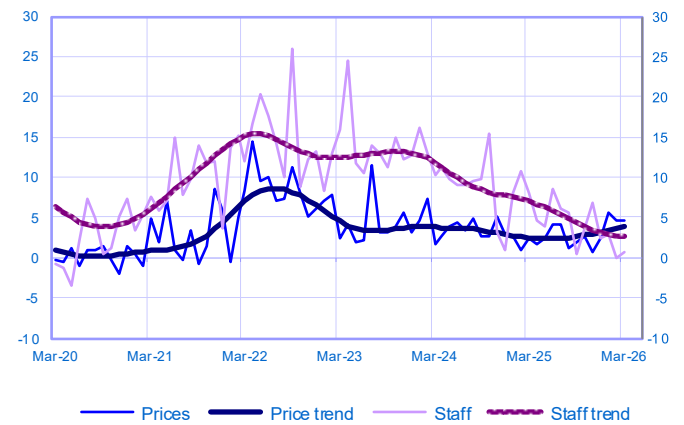
Changes in activity

Balance of opinions, SA-WDA



Changes in staff and prices

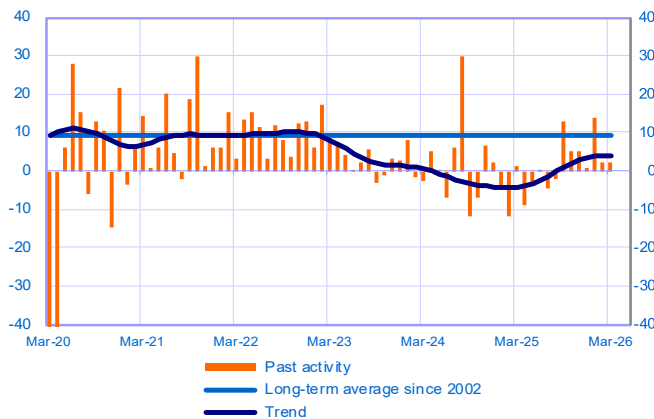
Balance of opinions, SA-WDA



**Computer and information services (15% of value added)**

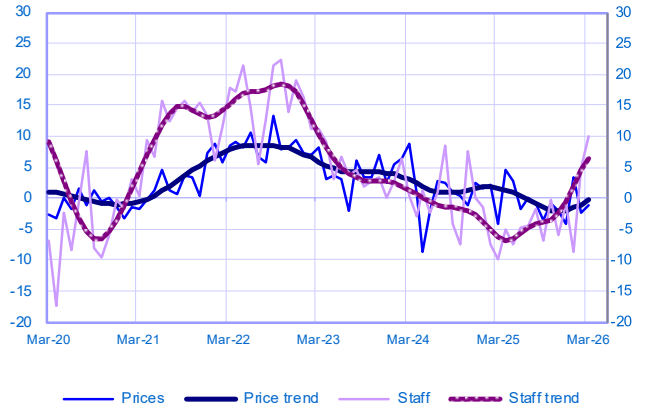
Changes in activity

Balance of opinions, SA-WDA



Changes in staff and prices

Balance of opinions, SA-WDA



March	Activity	Activity trend	Demand	Prices	Staff	Cash positions	Activity forecasts
<b>Information and communication</b>	4	6	8	-1	8	1	1
Publishing	10	12	15	4	1	9	10
Computer and information services	2	4	4	-1	10	-1	-1

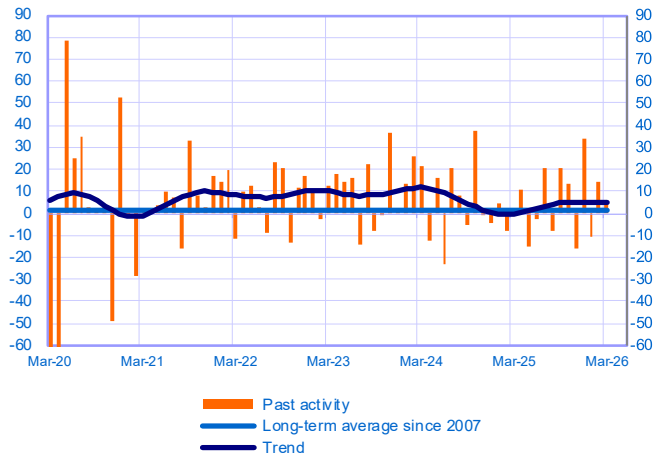
The aggregated and by sub-sector series are seasonally adjusted separately: the seasonally adjusted series do not represent the sum of the seasonally adjusted components.

**Recreation activities, personal services and activities of households as employers  
(6% of value added in market services)**

**Total**

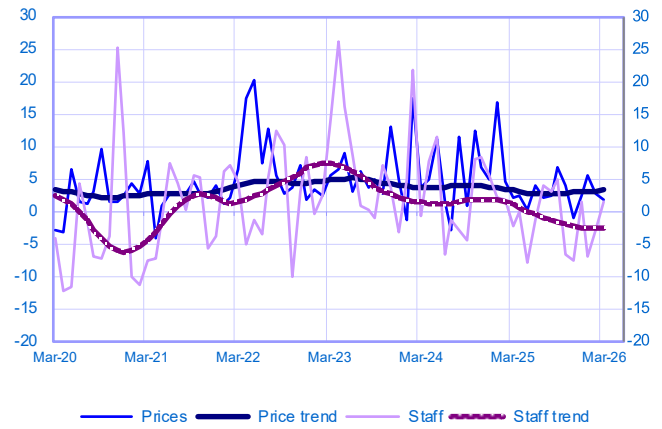
Changes in activity

Balance of opinions, SA-WDA



Changes in staff and prices

Balance of opinions, SA-WDA



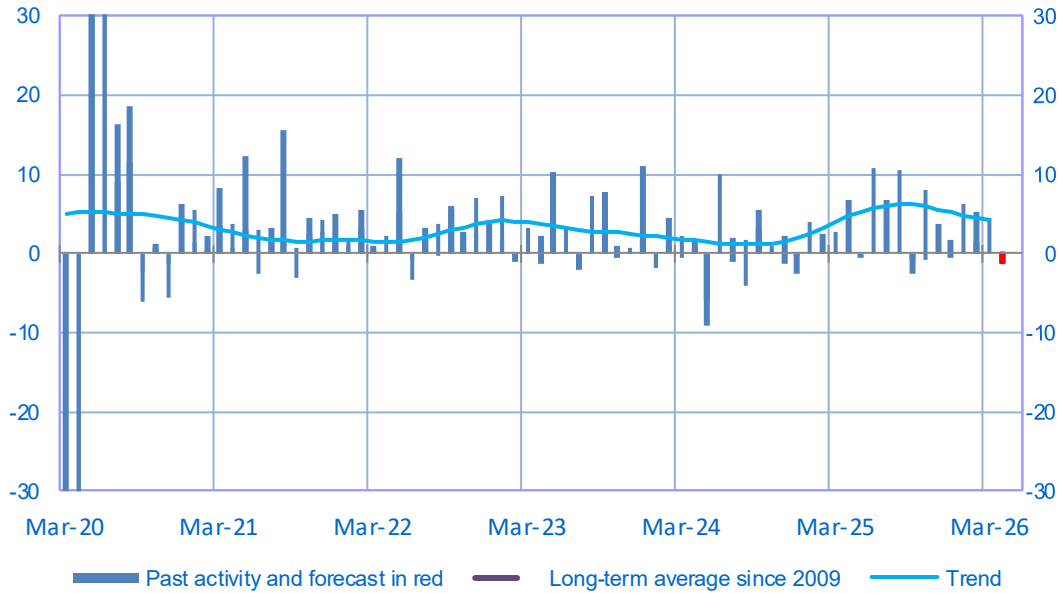
March	Activity	Activity trend	Demand	Prices	Staff	Cash positions	Activity forecasts
<b>Recreation activities, personal services and activities of households as employers</b>	<b>4</b>	<b>5</b>	<b>7</b>	<b>2</b>	<b>1</b>	<b>-3</b>	<b>1</b>

The aggregated and by sub-sector series are seasonally adjusted separately: the seasonally adjusted series do not represent the sum of the seasonally adjusted components.

# Construction

## Opinion on the outlook for construction activity\*

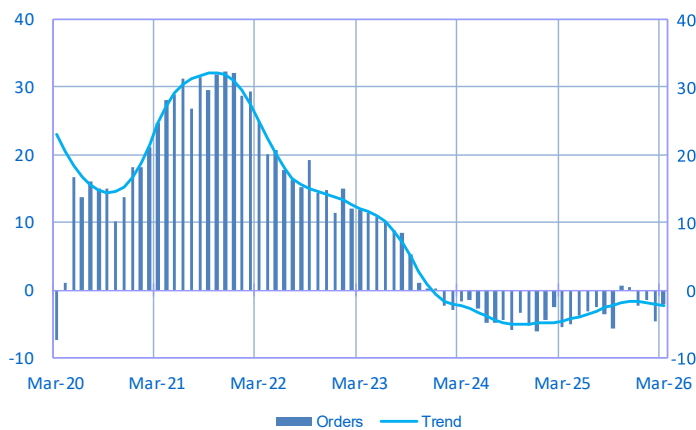
Balance of opinions, SA-WDA



	May-25	Jun-25	Jul-25	Aug-25	Sep-25	Oct-25	Nov-25	Dec-25	Jan-26	Feb-26	Mar-26	Apr-26
<b>Change</b>												<b>Forecast</b>
Activity	0	11	7	10	-3	8	4	2	6	5	4	-1
Estimates prices	-2	-2	0	0	-2	-1	-1	-1	1	1	3	
Staff	-1	0	1	1	1	1	0	0	0	1	1	
<b>Level</b>												
Order books	-4	-3	-3	-4	-6	1	0	-2	-2	-5	-2	

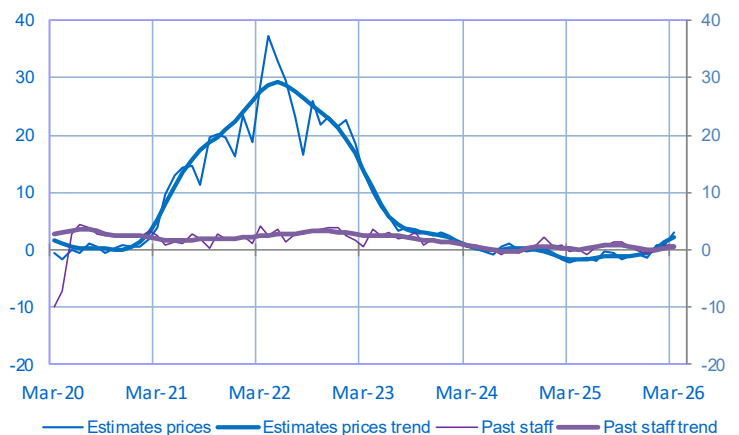
## Order book level

Balance of opinions, SA-WDA



## Changes in estimates prices and staff

Balance of opinions, SA-WDA



\* A positive (negative) balance of opinions corresponds to a rise (fall) in the evolution of activity. Balances of opinions may range from -200 to +200.

**Construction: sectoral level information**

Period under review: March 2026

**Construction of buildings**

(29% of value added of the covered sector)

**Specialised construction activities**

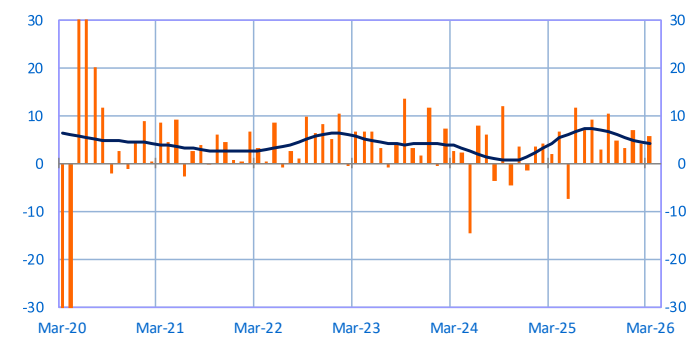
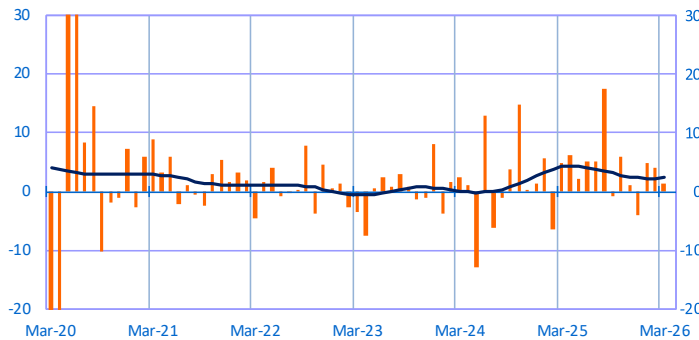
(71% of value added of the covered sector)

Changes in activity

Balance of opinions, SA-WDA

Changes in activity

Balance of opinions, SA-WDA



Construction of buildings — Trend

Specialised construction activities — Trend

March	Activity	Order Books	Prices	Staff	Activity forecasts
<b>Construction of residential and non-residential buildings</b>	1	-8	1	1	-8
<b>Specialised construction activities</b>	6	0	4	1	2

The aggregated and by sub-sector series are seasonally adjusted separately: the seasonally adjusted series do not represent the sum of the seasonally adjusted components.

Notes :

- A positive (negative) balance of opinions corresponds to a rise (fall) in the corresponding variable.
- Balances of opinions may range from -200 to +200.
- The last point corresponds to the business leaders' opinions of short-term production or activity forecasts.
- The series are revised on a monthly basis. These revisions take into account additional gross data and the evolution of the seasonal and working-day adjustment depending on the latest available data.

For further details, see the [methodology](#), the [publications calendar](#), the [contacts](#) and all statistical time series published by the Banque de France can be accessed on the following address [WEBSTAT Banque de France](#)



« With Banque de France: listening and dialogue »