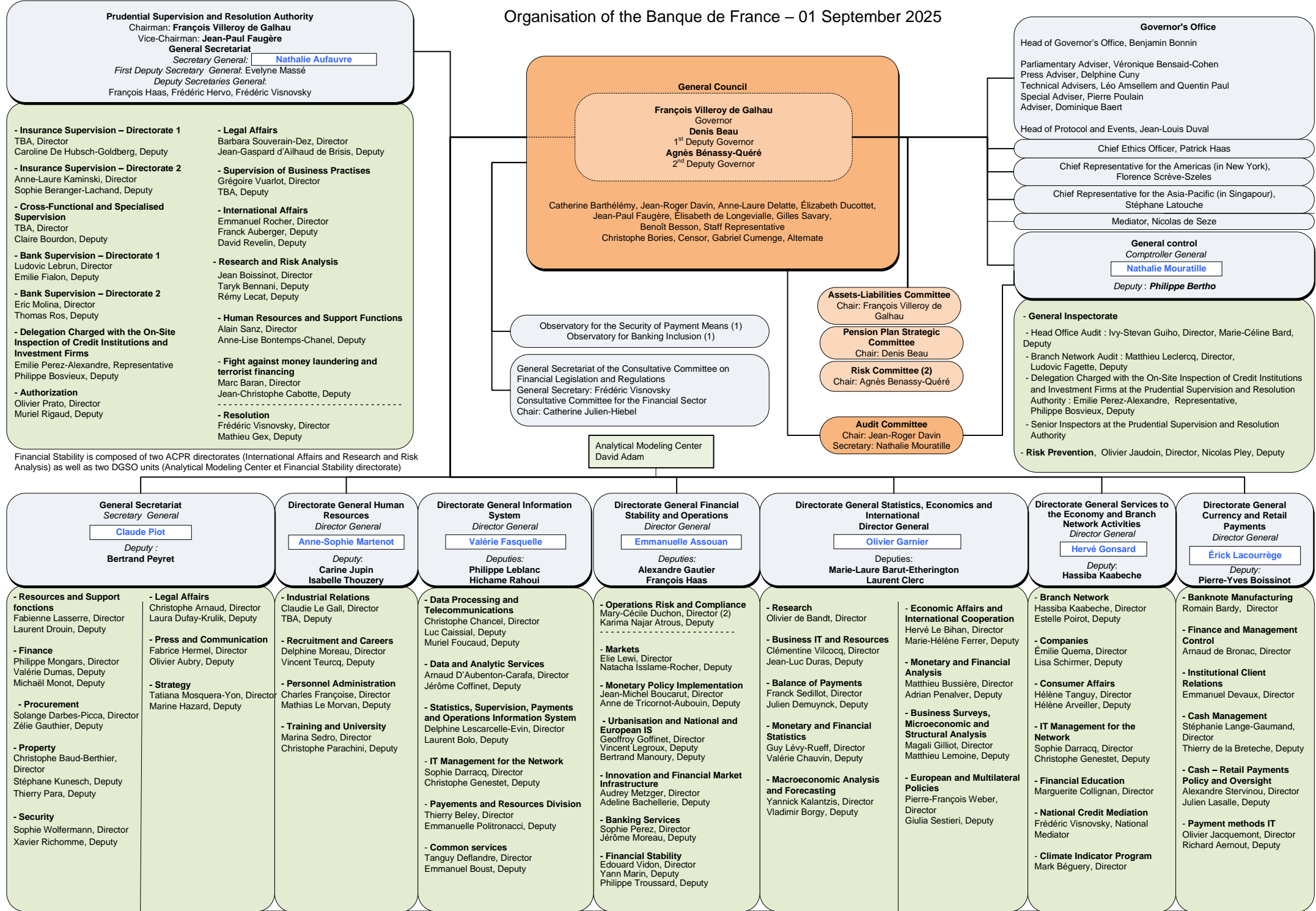


Organisation of the Banque de France – 01 September 2025



13 regional directorates attached to the DGSE: Laurent Fraisse (Burgundy-Franche-Comté), Marie-Agnès de Cherade de Montbron (New Aquitaine), Kathie Werquin-Wattebledt (Auvergne-Rhône-Alpes), Alain Gerbier (Ile-de-France), Laurent Sahuquet (Grand Est), Christian Delhomme (Centre-Val de Loire), Eric Villeneuve (Normandy), Stéphane Martinat (Hauts-de-France), Simone Kamicky (Pays de la Loire), Christine Bardinet (Occitanie), Claudine Hurman (Brittany), Denis Lauretou (Provence-Alpes-Côte d'Azur), Jean-Luc Chaussivert (Corsica)

(1) The Governor chairs the Observatory for the Security of Payment Means, the Observatory for Regulated Savings and the Observatory for Banking Inclusion. (2) The Director of Operations Risk and Compliance reports to both the Chair of the Risk Committee and the Director General Financial Stability and Operations.