



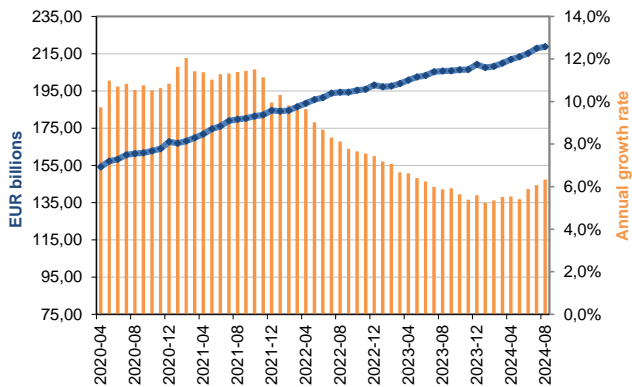
Monthly statistics on cash activity

August-24

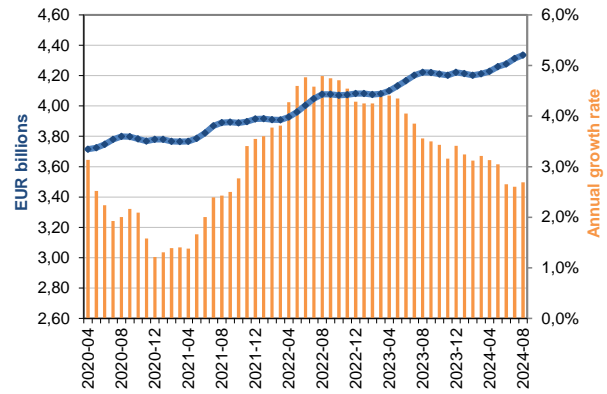
MONTHLY DEVELOPMENT OF NET ISSUANCE - FRANCE

Since the euro cash changeover in January 2002, the concept of currency circulation is not relevant nationally. Because of the lack of measurement of banknotes's migration, this indicator is only relevant at the level of the Eurosystem, and represents the overall volume of banknotes and coins in circulation, including those outside the eurozone. At the national level, we use the concept of net issuance, representing the cumulative sum of the differences between the withdrawals and the lodgments of each National Central Bank since the introduction of the euro.

Net issuance of banknotes in France (in value)



Net issuance of coins in France (in value)



Source : Banque de France, Cash Management

Evolution of banknote net issuance (EUR billions)
France

Fin de mois	2022	2023	2024
January	184,03	197,24	207,56
February	184,53	197,57	208,15
March	186,44	198,88	209,85
April	188,29	200,77	211,89
May	190,25	202,44	213,39
June	191,35	203,31	215,27
July	193,74	205,34	217,81
August	194,33	205,73	218,76
September	194,28	205,78	
October	195,37	206,39	
November	195,90	206,45	
December	198,14	209,22	

Evolution of coins net issuance (EUR billions)
France

Fin de mois	2022	2023	2024
January	3,92	4,08	4,21
February	3,91	4,08	4,20
March	3,91	4,08	4,21
April	3,93	4,10	4,23
May	3,96	4,13	4,26
June	4,00	4,17	4,28
July	4,05	4,20	4,31
August	4,08	4,22	4,34
September	4,08	4,22	
October	4,07	4,21	
November	4,07	4,20	
December	4,08	4,22	

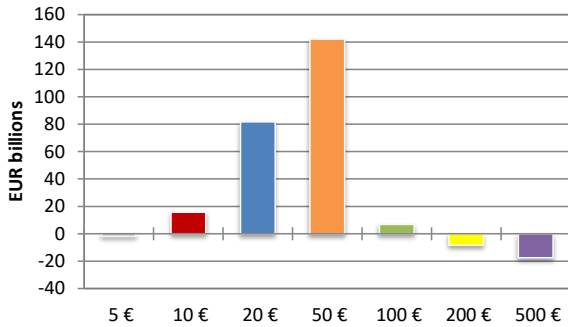
Source : Banque de France, Cash Management



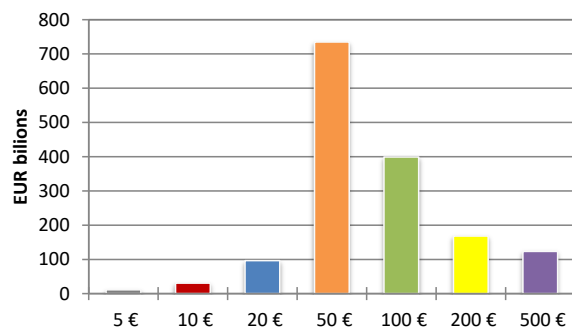
August-24

**NET ISSUANCE BY BANKNOTE DENOMINATION
COMPARISON FRANCE-EUROSISTÈME**

Net issuance of banknotes per denomination (FR)

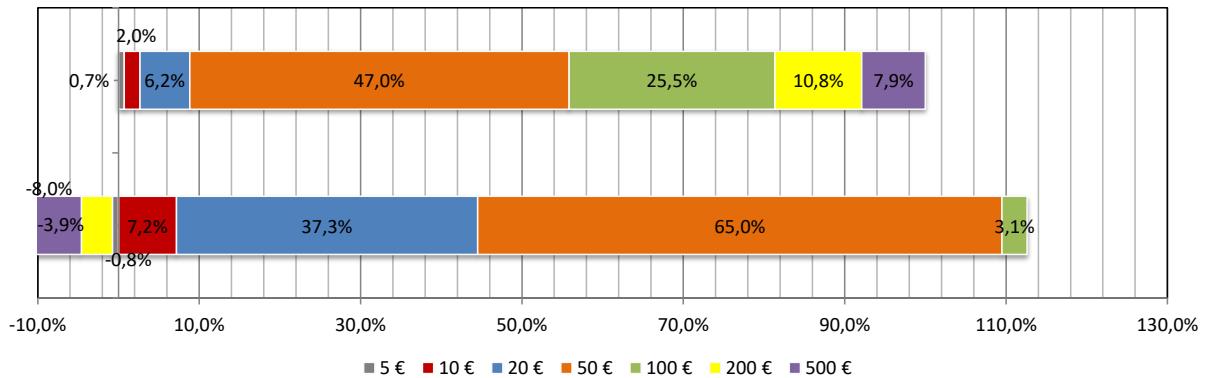


Net issuance of banknotes per denomination (EUR)



Source : ECB, Banque de France, Cash Management

Share per denomination in total net issuance (in value)



Source : ECB, Banque de France, Cash Management

Net issuance (EUR billions)	FRANCE			EUROSISTÈME		
	August-23	August-24	May-24 / May-23	August-23	August-24	May-24 / May-23
€ 500	-16,96	-17,53	3,3%	138,92	123,26	-11,3%
€ 200	-7,13	-8,42	18,1%	169,04	168,05	-0,6%
€ 100	8,84	6,83	-22,8%	393,15	398,98	1,5%
<i>Subtotal denominations of hoarding</i>	<i>-15,25</i>	<i>-19,12</i>	<i>25,4%</i>	<i>701,12</i>	<i>690,29</i>	<i>-1,5%</i>
€ 50	128,18	142,13	10,9%	723,66	734,82	1,5%
€ 20	79,43	81,70	2,9%	96,17	96,32	0,2%
€ 10	14,94	15,70	5,1%	30,13	30,55	1,4%
€ 5	-1,57	-1,64	4,8%	10,79	11,09	2,8%
<i>Subtotal denominations of transaction</i>	<i>220,99</i>	<i>237,89</i>	<i>7,6%</i>	<i>860,75</i>	<i>872,78</i>	<i>1,4%</i>
Total	205,73	218,76	6,3%	1 561,87	1 563,08	0,1%

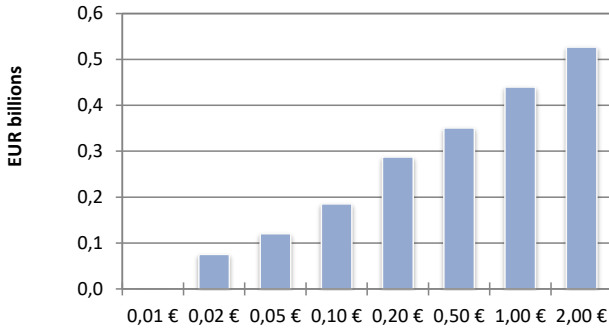
Source : ECB, Banque de France, Cash Management



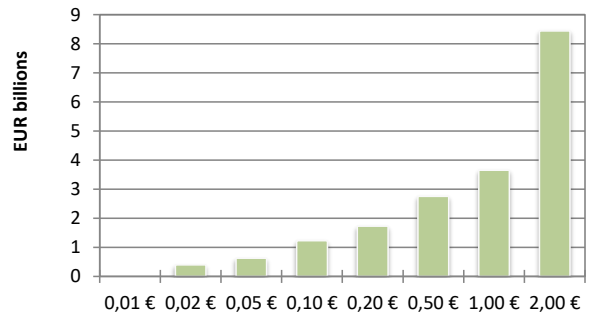
August-24

**NET ISSUANCE BY COIN DENOMINATION
COMPARISON FRANCE-EUROSISTÈME**

Net issuance of coins per denomination (FR)

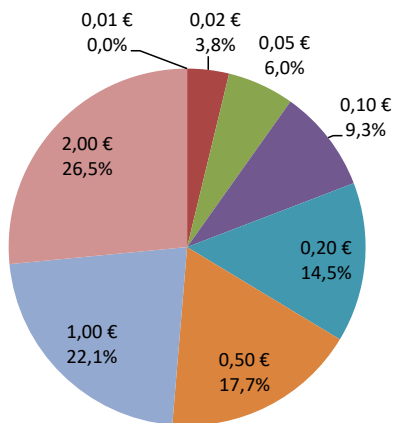


Net issuance of coins per denomination (EUR)

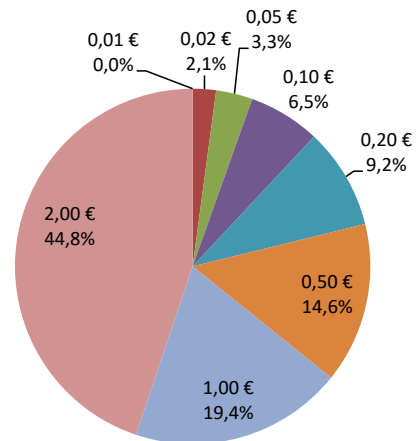


Source : ECB, Banque de France, Cash Management

Share of net issuance (in value - France)



Share of net issuance (in value - Eurosystem)



Source : ECB, Banque de France, Cash Management

Net issuance (EUR billions)	FRANCE		
	August-23	August-24	May-24 / May-23
€ 0.01	0,07	0,08	2,1%
€ 0.02	0,12	0,12	2,5%
€ 0.05	0,18	0,19	2,2%
€ 0.1	0,28	0,29	2,1%
€ 0.2	0,34	0,35	2,7%
€ 0.5	0,43	0,44	2,2%
€ 1	0,53	0,53	-1,4%
€ 2	2,26	2,35	3,9%
Total	4,22	4,34	2,7%

Net issuance (EUR billions)	EUROSISTÈME		
	August-23	August-24	May-24 / May-23
€ 0.01	0,39	0,40	1,6%
€ 0.02	0,62	0,63	1,8%
€ 0.05	1,20	1,23	2,1%
€ 0.1	1,70	1,73	1,9%
€ 0.2	2,69	2,75	2,5%
€ 0.5	3,57	3,66	2,3%
€ 1	8,25	8,44	2,3%
€ 2	14,86	15,36	3,4%
Total	33,28	34,20	2,8%

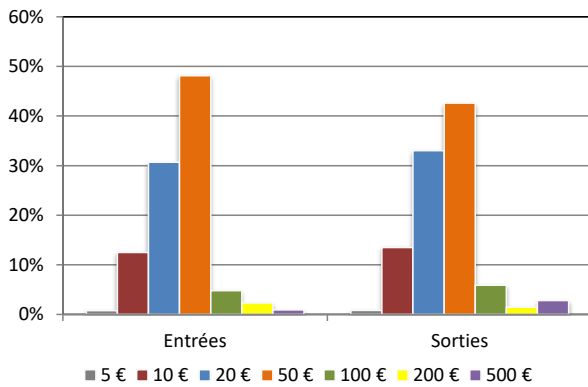
Source : ECB, Banque de France, Cash Management



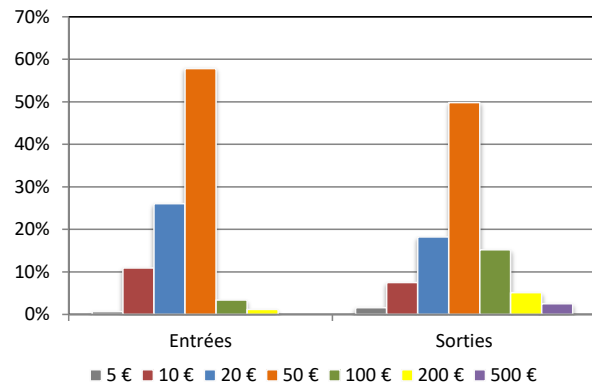
August-24

**STRUCTURE AND DEVELOPMENT OF BANKNOTES FLOWS
COMPARISON FRANCE-EUROSYSYEM**

Structure of banknotes flows (FR - in value)



Structure of banknotes flows (EUR - in value)



Source : ECB, Banque de France, Cash Management

EUR billions	5 €	10 €	20 €	50 €	100 €	200 €	500 €	Total
France								
♦ Lodgments								
2021	0,73	11,66	28,57	47,49	4,18	2,14	0,73	95,50
2022	0,79	11,77	28,43	49,12	5,42	2,59	0,77	98,89
2023	0,78	11,20	26,61	48,18	5,74	2,64	0,70	95,84
2024	0,50	7,33	16,95	31,12	3,59	1,68	0,36	61,53
♦ Withdrawals								
2021	0,72	12,45	31,76	61,73	4,44	1,10	0,00	112,20
2022	0,73	12,64	31,21	62,11	4,43	1,52	0,00	112,63
2023	0,71	11,88	28,77	60,80	3,33	1,45	0,00	106,93
2024	0,45	7,78	18,50	41,10	2,39	0,86	0,00	71,08
Eurosystem								
♦ Lodgments								
2021	11,50	56,88	137,76	393,50	121,81	45,29	16,19	782,94
2022	12,11	60,38	144,88	424,63	147,01	86,95	36,41	912,37
2023	12,13	59,65	143,77	441,54	156,81	58,65	17,25	889,80
2024	7,94	38,97	93,48	287,94	103,64	35,26	10,19	577,42
♦ Withdrawals								
2021	12,69	61,32	153,11	477,61	154,23	89,65	0,21	948,82
2022	11,77	57,57	140,75	441,68	152,06	89,18	0,19	893,20
2023	12,49	60,32	144,82	451,27	158,96	56,95	0,18	884,99
2024	8,06	38,75	92,64	291,50	107,67	34,60	0,11	573,33

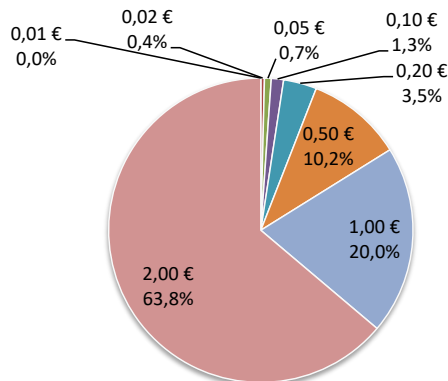
Source : BCE, Banque de France, Direction des Activités Fiduciaires



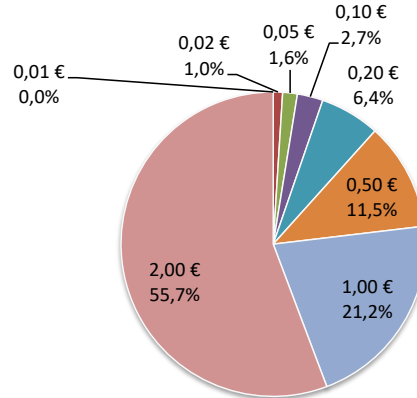
August-24

**STRUCTURE AND EVOLUTION OF COIN'S FLOWS
COMPARISON FRANCE-EUROSYSTEM**

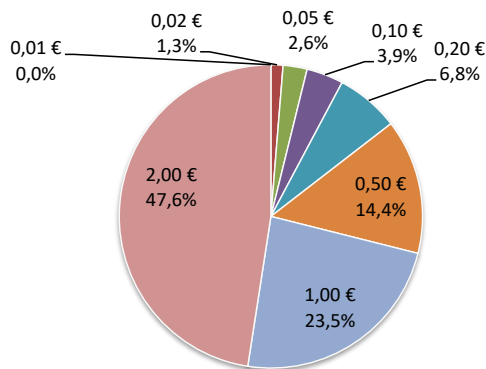
Structure of lodgments 2023 (FR - in value)



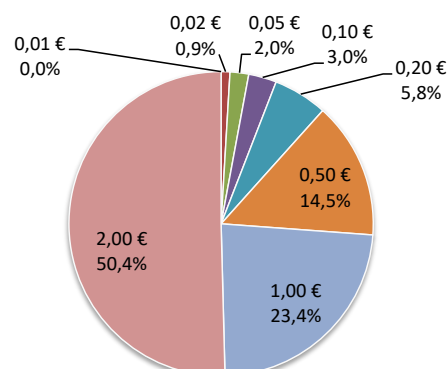
Structure of withdrawals in 2023 (FR - in value)



Structure of lodgments 2023 (EUR - in value)



Structure of withdrawals 2023 (EUR - in value)



Source : ECB, Banque de France, Cash Management

EUR billions	0,01 €	0,02 €	0,05 €	0,10 €	0,20 €	0,50 €	1,00 €	2,00 €	Total
France									
♦ Lodgments									
2022	0,26	0,60	1,45	3,79	10,29	18,42	67,09	93,23	195,14
2023	0,26	0,63	1,33	3,03	9,73	18,89	66,76	84,77	185,40
2024	0,19	0,48	1,02	2,08	5,89	10,96	37,64	46,56	104,83
♦ Withdrawals									
2022	1,96	3,44	5,69	12,14	21,32	35,79	81,41	201,07	362,81
2023	1,73	3,30	4,79	9,33	20,15	32,46	68,07	184,78	324,61
2024	1,21	2,41	3,71	6,38	13,58	22,20	44,90	125,16	219,56
Eurosystem									
♦ Lodgments									
2022	14,82	35,67	56,76	102,68	263,49	390,63	815,15	1 641,41	3 320,62
2023	16,78	38,17	63,39	116,28	284,04	423,32	910,67	1 810,45	3 663,10
2024	10,86	23,72	36,70	68,28	174,79	251,06	543,33	1 128,58	2 237,32
♦ Withdrawals									
2022	22,20	49,00	89,23	149,07	347,78	517,57	1 122,50	2 262,13	4 559,46
2023	23,45	50,13	90,31	153,54	354,19	531,03	1 156,33	2 370,88	4 729,86
2024	15,00	31,37	57,28	95,29	235,03	324,54	688,75	1 515,30	2 962,57

Source : BCE, Banque de France, Direction des Activités Fiduciaires