

Corporate bankruptcies – France • June 2023

At the end of June, the number of corporate bankruptcies rose again but remained below its average pre-pandemic level

- The catch-up in the number of corporate bankruptcies initiated in fall 2021 continues. Over one year (between July 2022 and June 2023), it reaches 48,673 against 33,570 a year earlier and 59,342 on average pre-pandemic (see Figure 1, as well as Tables A and B).
- This catch-up trend affects all sectors of the economy (see Figure 2) and companies of all sizes, but to a lesser extent for microenterprises and indeterminate size (see Table B).
- The number of annual corporate bankruptcies remains significantly lower than the average level recorded over the 2010-2019 period, prior to the COVID-19 pandemic. Indeed, the number of corporate bankruptcies had been particularly low since the beginning of the COVID-19 crisis, due to the adoption of regulations temporarily granting additional time to both assess and report insolvency, and, later, cash support measures to avoid the occurrence of insolvency.

To find out more: data on business start-ups are reported by the French National Institute of Statistics and Economic Studies (INSEE): [Business births on the INSEE's website](#)

A – Corporate bankruptcies by sector

Bankruptcies in number of legal units, year-on-year change (%)

Aggregate over previous 12 months^a (raw data)

Business sector	2019	May 23	May 23 /May 22	May 23 /2019	June 22	June 23 prov.	June 23 /June 22	June 23 /2019
Agriculture, forestry and fishing (AZ)	1,414	1,225	9.3 %	-13.4 %	1,099	1,180	7.4 %	-16.5 %
Industry (BE)	3,436	3,513	58.9 %	2.2 %	2,313	3,590	55.2 %	4.5 %
Construction (FZ)	11,089	9,748	44.4 %	-12.1 %	6,978	9,826	40.8 %	-11.4 %
Wholesale and retail trade; repair of motor vehicles and motorcycles (G)	11,137	10,666	49.9 %	-4.2 %	7,353	10,747	46.2 %	-3.5 %
Transportation and storage (H)	2,097	1,941	37.5 %	-7.4 %	1,470	1,957	33.1 %	-6.7 %
Accommodation and food service activities (I)	6,840	6,591	81.2 %	-3.6 %	3,860	6,789	75.9 %	-0.7 %
Information and communication (JZ)	1,277	1,459	50.9 %	14.3 %	1,012	1,480	46.2 %	15.9 %
Financial and insurance activities (KZ)	1,086	1,113	47.0 %	2.5 %	765	1,142	49.3 %	5.2 %
Real estate activities (LZ)	1,631	1,603	31.3 %	-1.7 %	1,183	1,623	37.2 %	-0.5 %
Advisory & Business support activities (MN)	5,813	5,508	36.1 %	-5.2 %	4,209	5,546	31.8 %	-4.6 %
Education, human health and social work services, Arts, entertainment and recreation, Other service activities (P to S)	5,140	4,607	48.9 %	-10.4 %	3,260	4,708	44.4 %	-8.4 %
All firms^b	51,145	48,051	48.3 %	-6.0 %	33,570	48,673	45.0 %	-4.8 %

Source: Banque de France – database: Fiben. Data available early July 2023: final for May, provisional for June.

Calculation: Banque de France – Companies Directorate – Companies Observatory.

^a Aggregate number of corporate bankruptcies over previous 12 months compared to the same aggregate one year before and in 2019 (January to December 2019).

^b The line « All firms » includes legal units whose business sector is not known.

B – Corporate bankruptcies by firm size

Bankruptcies in number of legal units, year-on-year change (%)

Aggregate over previous 12 months^a (raw data)

	2019	May 23	May 23 / May 22	May 23 / 2019	June 22	June 23 prov.	June 23 / June 22	June 23 / 2019
Size								
SME, among them	51,119	48,007	48.3 %	-6.1 %	33,547	48,620	44.9 %	-4.9 %
Micro-enterprises and unknown firm's size	48,747	44,341	45.8 %	-9.0 %	31,457	44,874	42.7 %	-7.9 %
Very small firms	1,478	2,255	83.6 %	52.6 %	1,297	2,321	79.0 %	57.0 %
Small firms	650	1,054	92.3 %	62.2 %	595	1,058	77.8 %	62.8 %
Medium-sized firms	244	357	85.0 %	46.3 %	198	367	85.4 %	50.4 %
ISE – Large Firms	26	44	91.3 %	69.2 %	23	53	130.4 %	103.8 %
All firms	51,145	48,051	48.3 %	-6.0 %	33,570	48,673	45.0 %	-4.8 %

Source: Banque de France – database: Fiben. Data available early July 2023: final for May, provisional for June.

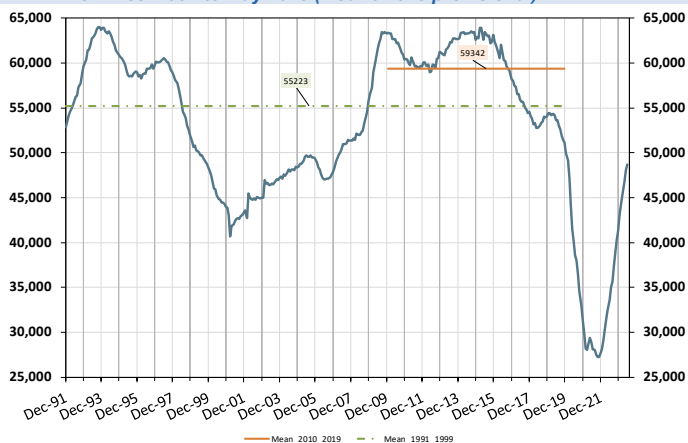
Calculation: Banque de France – Companies Directorate – Companies Observatory.

^a Aggregate number of corporate bankruptcies over previous 12 months compared to the same aggregate one year before and in 2019 (January to December 2019).

C – Changes in corporate bankruptcies

1 – Number of bankruptcies

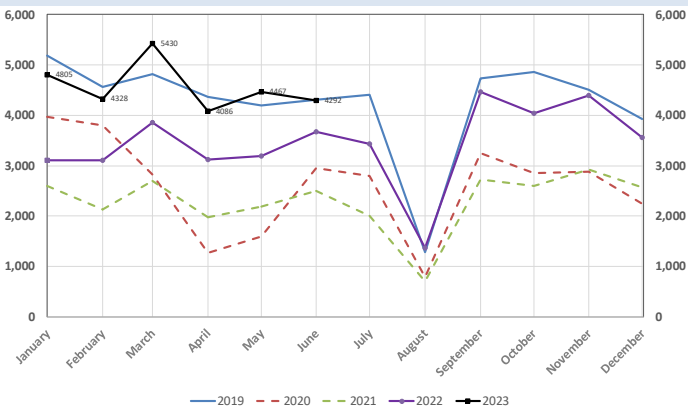
Cumulated over previous 12 months
From Dec. 1991 to May 2023 (+ June 2023 provisional)



Note: The dotted green curve represents the average value of the number of corporate bankruptcies over twelve months observed monthly between December 1991 and December 2019. The orange curve represents this average level over the period January 2010 - December 2019, which is a high for the observation period.

3 – Monthly number of bankruptcies

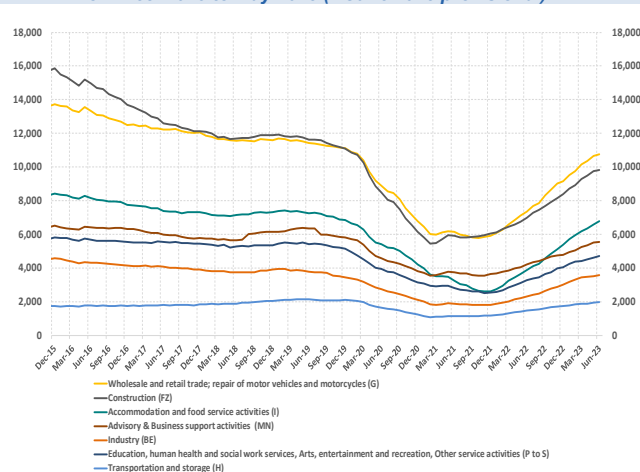
From Jan. 2019 to May 2023 (+ June 2023 provisional)



Source: Banque de France – database: Fiben. Data available early July 2023: final for May, provisional for June.

2 – Number of bankruptcies by sector

Cumulated over previous 12 months
From Dec. 2015 to May 2023 (+ June 2023 provisional)



4 – Loan amounts of bankrupt non-financial firms over loan amount of all firms – by firm size

Cumulated over previous 12 months
From Dec. 2006 to May 2023 (+ June 2023 provisional)

