

Corporate bankruptcies – France • April 2022

The number of corporate bankruptcies remains low close to 31,000 over the last 12 months

- By the end of April 2022, the number of corporate bankruptcies over one year (between May 2021 and April 2022) is 30,915. This is 30 % lower than the cumulative number of bankruptcies recorded two years ago (between May 2019 and April 2020) and 43 % lower than three years ago (between May 2018 and April 2019), which is a period entirely before the COVID 19 crisis (see Figure 1). At this stage, there are no signs of a wave of insolvencies in the future.
- Interpreting the increase of 7.4 % with respect to the cumulative number of bankruptcies recorded last year (between May 2020 and April 2021) calls for caution since the latter includes the first months of the Covid-19 crisis. At the time, the temporary closure of commercial courts, the adoption of regulations temporarily granting additional time to both assess and report insolvency, and, later, the cash support measures to avoid the occurrence of insolvency resulted in a reduction of corporate bankruptcies.

To find out more: data on business start-ups are reported by the French National Institute of Statistics and Economic Studies (INSEE): <https://www.insee.fr/en/statistiques/6434357>

A – Corporate bankruptcies by sector

Bankruptcies in number of legal units, year-on-year change (%)

Business sector	Aggregate over previous 12 months ^a (raw data)							
	Mar. 20	Mar. 21	Mar. 22	Mar. 22/Mar. 21	Mar. 22/Mar. 20	Apr. 22 prov.	Apr. 22/Apr. 21	Apr. 22/Apr. 20
Agriculture, forestry and fishing (AZ)	1,276	971	1,072	10.4 %	-16.0 %	1,044	1.8 %	-13.7 %
Industry (BE)	3,177	1,822	2,010	10.3 %	-36.7 %	2,119	14.4 %	-29.3 %
Construction (FZ)	10,233	5,462	6,410	17.4 %	-37.4 %	6,491	14.1 %	-31.4 %
Wholesale and retail trade; repair of motor vehicles and motorcycles (G)	10,389	5,978	6,560	9.7 %	-36.9 %	6,756	10.1 %	-30.4 %
Transportation and storage (H)	1,966	1,090	1,286	18.0 %	-34.6 %	1,372	23.8 %	-24.7 %
Accommodation and food service activities (I)	6,258	3,505	3,225	-8.0 %	-48.5 %	3,391	-3.3 %	-41.8 %
Information and communication (JZ)	1,253	827	928	12.2 %	-25.9 %	936	11.3 %	-21.5 %
Financial and insurance activities (KZ)	999	667	700	4.9 %	-29.9 %	723	8.9 %	-25.5 %
Real estate activities (LZ)	1,475	1,182	1,235	4.5 %	-16.3 %	1,202	-2.5 %	-13.3 %
Advisory & Business support activities (MN)	5,382	3,583	3,829	6.9 %	-28.9 %	3,924	6.5 %	-21.7 %
Education, human health and social work services, Arts, entertainment and recreation, Other service activities (P to S)	4,510	2,906	2,841	-2.2 %	-37.0 %	2,889	-2.2 %	-32.4 %
All firms^b	47,105	28,073	30,163	7.4 %	-36.0 %	30,915	7.4 %	-29.8 %

Source: Banque de France – database: Fiben. Data available in early May 2022: final for March, provisional for April.

Calculation : Banque de France – Companies Directorate – Companies Observatory.

^a Aggregate number of corporate bankruptcies over the previous 12 months compared to the same aggregate one year and two years before.

^b The line « All firms » includes legal units whose business sector is not known.

B – Corporate bankruptcies by firm size

Bankruptcies in number of legal units, year-on-year change (%)

Aggregate over previous 12 months^a (raw data)

Size	Mar. 20	Mar. 21	Mar. 22	Mar. 22/Mar. 21	Mar. 22/Mar. 20	Apr. 22 prov.	Apr. 22/Apr. 21	Apr. 22 /Apr. 20
SME, among them	47,079	28,021	30,141	7.6 %	-36.0 %	30,895	7.6 %	-29.8 %
Micro-enterprises and unknown firm's size	44,780	26,432	28,366	7.3 %	-36.7 %	29,053	7.1 %	-30.5 %
Very small firms	1,395	927	1,156	24.7 %	-17.1 %	1,193	26.6 %	-10.2 %
Small firms	652	465	467	FAUX	-28.4 %	479	3.5 %	-26.0 %
Medium-sized firms	252	197	152	-22.8 %	-39.7 %	170	-10.1 %	-29.2 %
ISE – Large Firms	26	52	22	-57.7 %	-15.4 %	20	-59.2 %	-33.3 %
All firms	47,105	28,073	30,163	7.4 %	-36.0 %	30,915	7.4 %	-29.8 %

Source: Banque de France – database: Fiben. Data available in early May 2022: final for March, provisional for April.

Calculation : Banque de France – Companies Directorate – Companies Observatory.

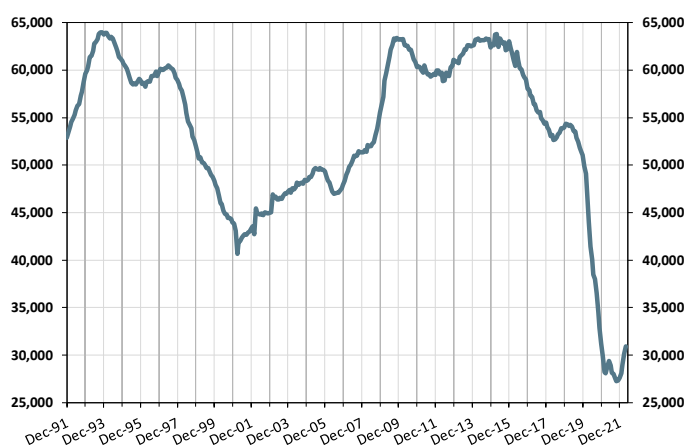
^a Aggregate number of corporate bankruptcies over the previous 12 months compared to the same aggregate one year and two years before.

C – Changes in corporate bankruptcies

1 – Number of bankruptcies

Cumulated over previous 12 months

From Dec. 1991 to March 2022 (+ April 2022 provisional)

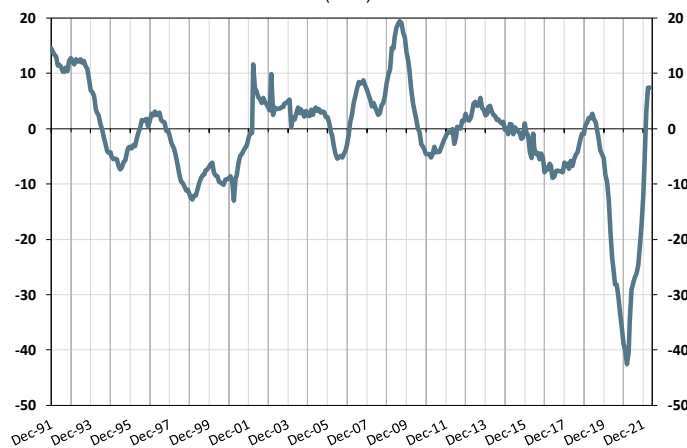


2 – Change in number of bankruptcies

Annual year-on-year change

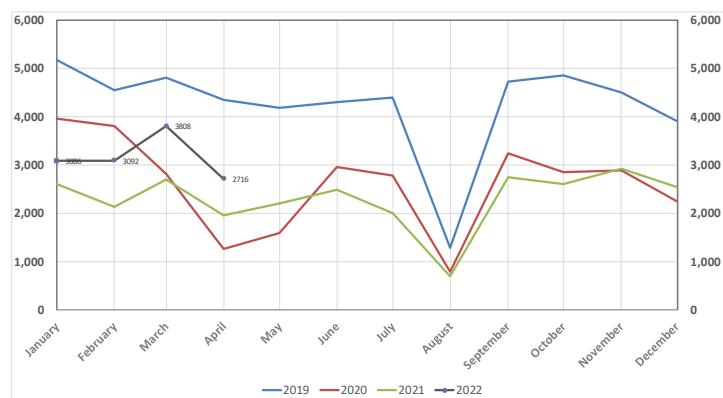
From Dec. 1991 to March 2022 (+ April 2022 provisional)

(in %)



3 – Monthly number of bankruptcies

From Jan. 2019 to March 2022 (+ April 2022 provisional)

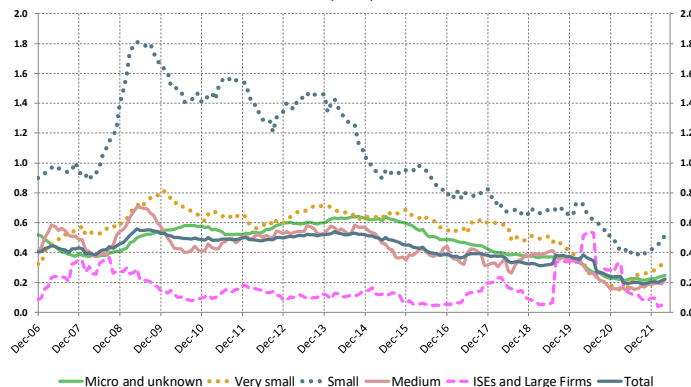


4 – Loan amounts of bankrupt non-financial firms over loan amount of all firms – by firm size

Cumulated over previous 12 months

From Dec. 2006 to March 2022 (+ April 2022 provisional)

(in %)



Source: Banque de France – database: Fiben. Data available in early May: final for March, provisional for April.