

Corporate bankruptcies – France • March 2022

The number of corporate bankruptcies over the last 12 months remains close to 30,000 and 45% below 2019

By the end of March 2022, the number of corporate bankruptcies over one year (between April 2021 and March 2022) is 29,865. This represents an increase of 6.3% compared to the cumulative number of bankruptcies recorded between April 2020 and March 2021 (see Tables A and B, as well as Figure 2). However, interpreting this increase calls for caution since the latter includes the first months of the Covid-19 crisis. At the time, the temporary closure of commercial courts, the adoption of regulations temporarily granting additional time to both assess and report insolvency, and, later, the cash support measures to avoid the occurrence of insolvency resulted in a reduction of corporate bankruptcies.

The number of corporate bankruptcies remains at a low level compared to the years prior to the COVID-19 pandemic. It is 44.8% below its level in March 2019, and 36.6% below that in March 2020 (see Figure 1). Despite the phasing out of support measures, some of which hold on in the crisis exit plan, bankruptcy figures at the beginning of 2022 remain overall lower than in 2019 (see Figure 3). At this stage, there are no signs of a wave of insolvencies in the future.

To find out more: data on business start-ups are reported by the French National Institute of Statistics and Economic Studies (INSEE): <https://www.insee.fr/en/statistiques/6215525>

A – Corporate bankruptcies by sector

Bankruptcies in number of legal units, year-on-year change (%)

Aggregate over previous 12 months^a (raw data)

	Feb. 20	Feb. 21	Feb. 22	Feb. 22/Feb. 21	Feb. 22/Feb. 20	Mar. 22 prov.	Mar. 22/Mar. 21	Mar. 22/Mar. 20
<i>Business sector</i>								
Agriculture, forestry and fishing (AZ)	1,318	952	1,068	12.2 %	-19.0 %	1,034	6.7 %	-19.0 %
Industry (BE)	3,284	1,859	1,944	4.6 %	-40.8 %	1,995	9.3 %	-37.2 %
Construction (FZ)	10,702	5,441	6,283	15.5 %	-41.3 %	6,376	16.7 %	-37.7 %
Wholesale and retail trade; repair of motor vehicles and motorcycles (G)	10,783	6,039	6,246	3.4 %	-42.1 %	6,492	8.5 %	-37.5 %
Transportation and storage (H)	2,049	1,070	1,251	16.9 %	-38.9 %	1,283	17.6 %	-34.7 %
Accommodation and food service activities (I)	6,534	3,616	2,938	-18.8 %	-55.0 %	3,198	-8.8 %	-48.9 %
Information and communication (JZ)	1,295	813	878	8.0 %	-32.2 %	922	11.6 %	-26.4 %
Financial and insurance activities (KZ)	1,035	688	669	-2.8 %	-35.4 %	699	4.6 %	-30.0 %
Real estate activities (LZ)	1,531	1,155	1,235	6.9 %	-19.3 %	1,210	2.1 %	-18.0 %
Advisory & Business support activities (MN)	5,649	3,553	3,769	6.1 %	-33.3 %	3,795	5.9 %	-29.5 %
Education, human health and social work services, Arts, entertainment and recreation, Other service activities (P to S)	4,725	2,937	2,669	-9.1 %	-43.5 %	2,794	-3.9 %	-38.0 %
All firms^b	49,095	28,208	29,015	2.9 %	-40.9 %	29,865	6.3 %	-36.6 %

Source: Banque de France – database: Fiben. Data available in early April 2022: final for February, provisional for March.

Calculation : Banque de France – Companies Directorate – Companies Observatory.

^a Aggregate number of corporate bankruptcies over the previous 12 months compared to the same aggregate one year and two years before.

^b The line « All firms » includes legal units whose business sector is not known.

B – Corporate bankruptcies by firm size

Bankruptcies in number of legal units, year-on-year change (%)

Aggregate over previous 12 months^a (raw data)

Size	Feb. 20	Feb. 21	Feb. 22	Feb. 22/Feb. 21	Feb. 22/Feb. 20	Mar. 22 prov.	Mar. 22/Mar. 21	Mar. 22 /Mar. 20
SME, among them	49,072	28,157	28,991	3.0 %	-40.9 %	29,842	6.4 %	-36.6 %
Micro-enterprises and unknown firm's size	46,730	26,548	27,310	2.9 %	-41.6 %	28,077	6.2 %	-37.3 %
Very small firms	1,442	930	1,076	15.7 %	-25.4 %	1,148	23.7 %	-17.7 %
Small firms	655	479	453	FAUX	-30.8 %	466	0.2 %	-28.5 %
Medium-sized firms	245	200	152	-24.0 %	-38.0 %	151	-23.4 %	-40.1 %
ISE – Large Firms	23	51	24	-52.9 %	4.3 %	23	-55.8 %	-11.5 %
All firms	49,095	28,208	29,015	2.9 %	-40.9 %	29,865	6.3 %	-36.6 %

Source: Banque de France – database: Fiben. Data available in early April 2022: final for February, provisional for March.

Calculation : Banque de France – Companies Directorate – Companies Observatory.

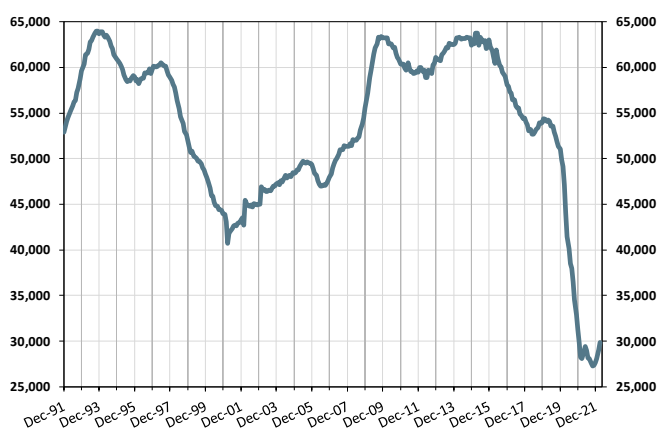
^a Aggregate number of corporate bankruptcies over the previous 12 months compared to the same aggregate one year and two years before.

C – Changes in corporate bankruptcies

1 – Number of bankruptcies

Cumulated over previous 12 months

From Dec. 1991 to February 2022 (+ March 2022 provisional)

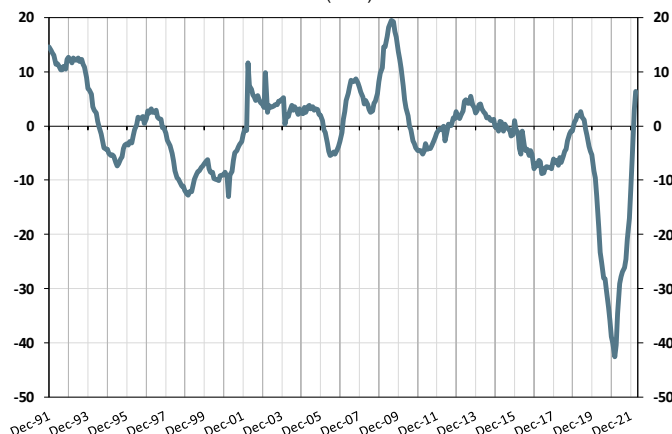


2 – Change in number of bankruptcies

Annual year-on-year change

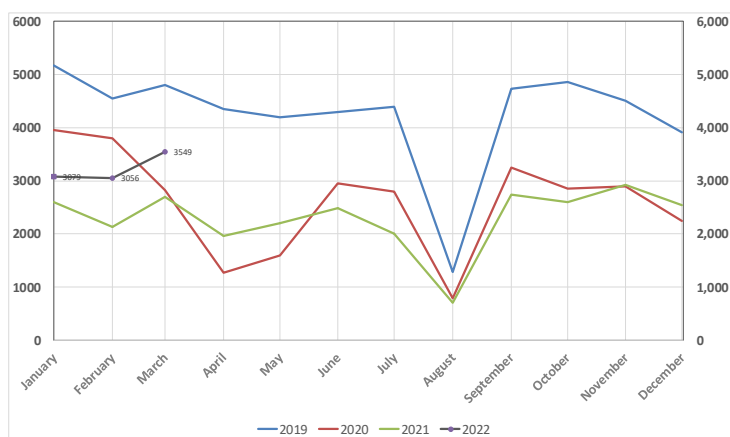
From Dec. 1991 to February 2022 (+ March 2022 provisional)

(in %)



3 – Monthly number of bankruptcies

From Jan. 2019 to February 2022 (+ March 2022 provisional)

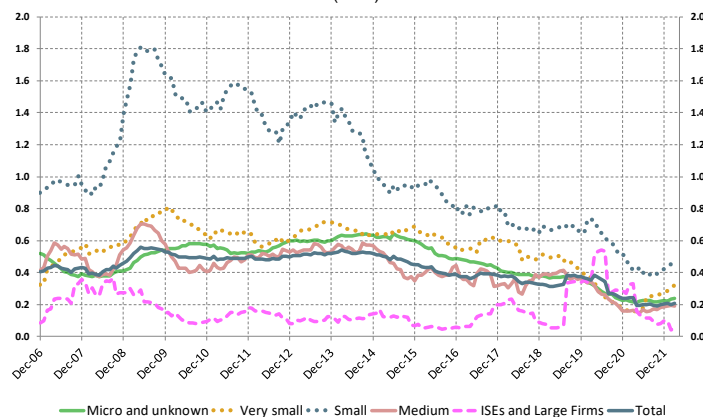


4 – Loan amounts of bankrupt non-financial firms over loan amount of all firms – by firm size

Cumulated over previous 12 months

From Dec. 2006 to February 2022 (+ March 2022 provisional)

(in %)



Source: Banque de France – database: Fiben. Data available in early April: final for February, provisional for March.